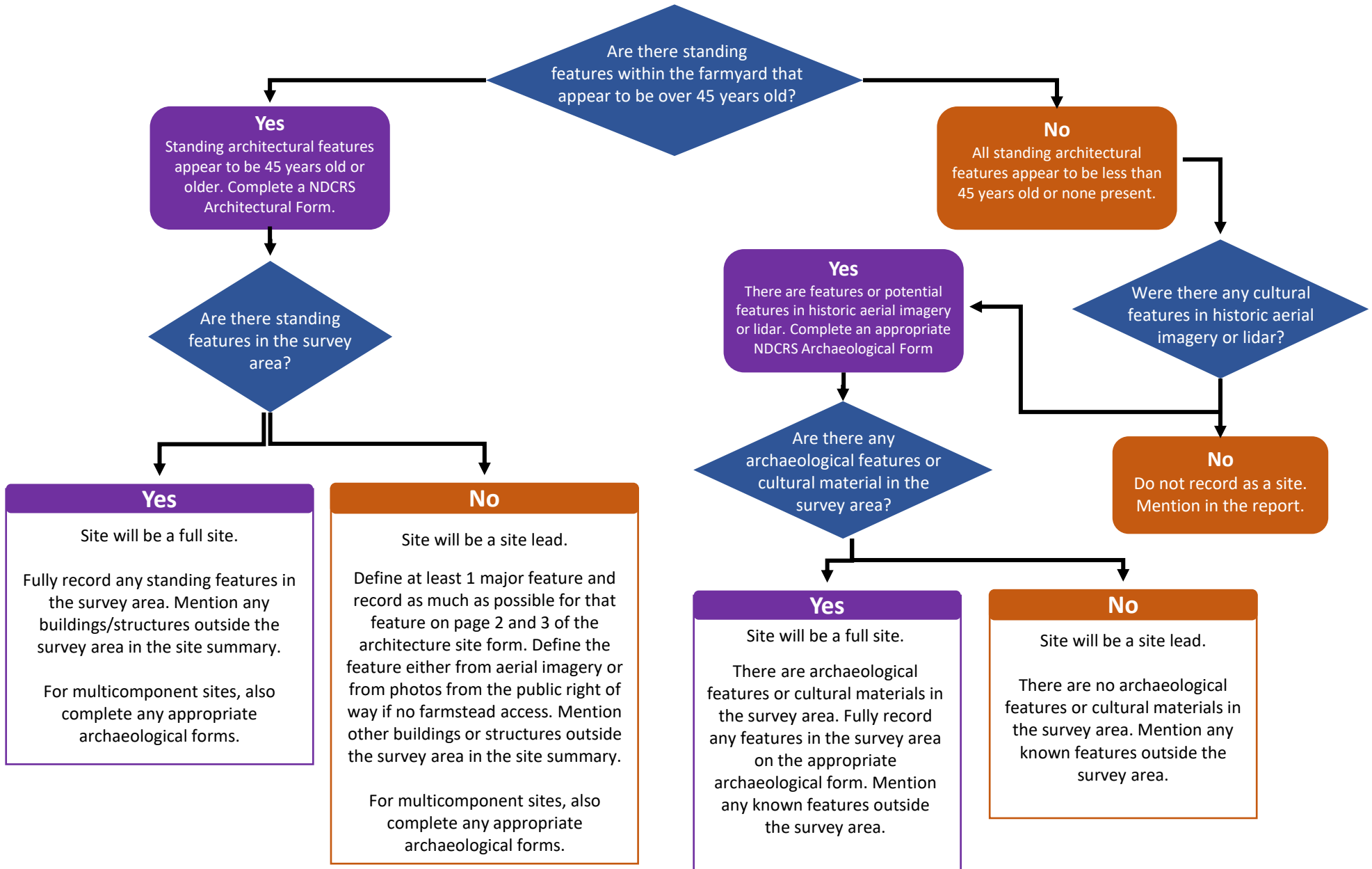


# General guidance for if a survey area crosses into a farmyard

Note that specific projects may have different recording needs, depending on the project and agency requirements (for example, wind farm architectural surveys). For Section 106 projects, the APE and level of effort is based on the scope and scale of the project and defined by the federal agency in consultation with SHPO (36 CFR 800.4). For state level projects without federal funding or permitting, consult with SHSND to ensure acceptable survey area coverage (email shsculturalreview@nd.gov).

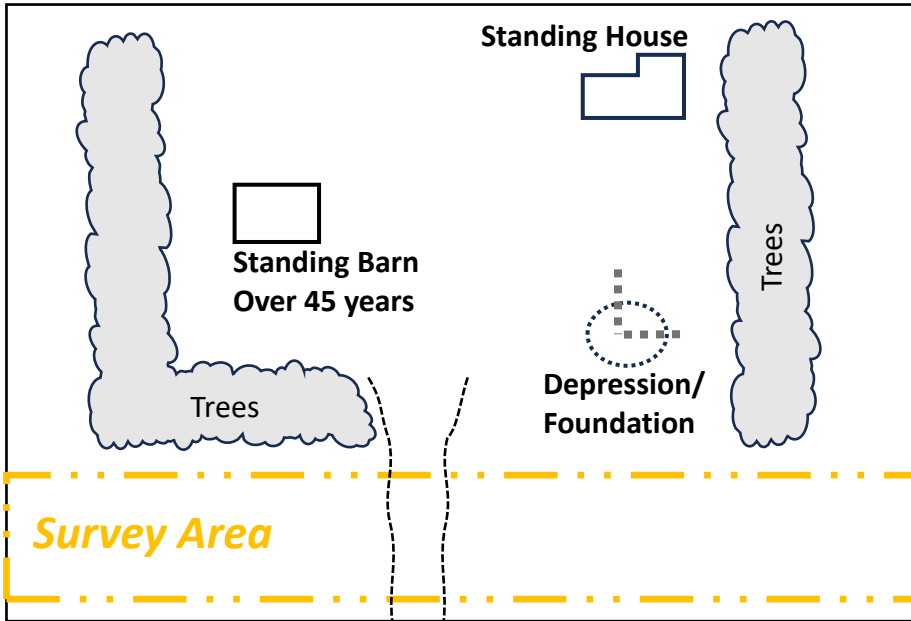


\*Tree rows that are part of a farmstead or define the boundaries of a farmstead should be mentioned in the setting and included within the farmstead boundary.

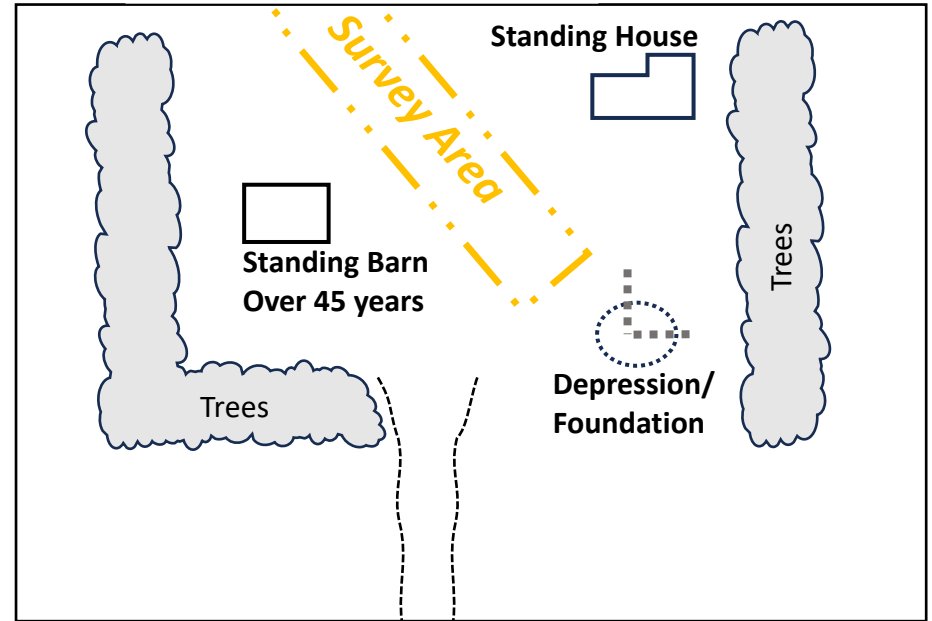
\*Stand alone tree rows (for example, wind breaks not associated with a farmstead) are a non-site.

# Farmyard Examples

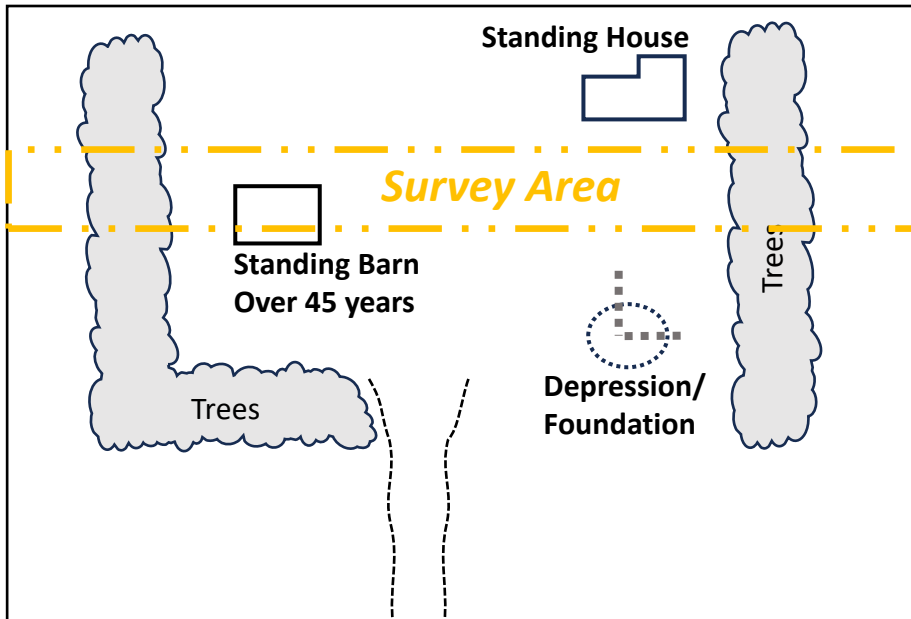
\*Not inclusive of all survey situations or farmyard scenarios



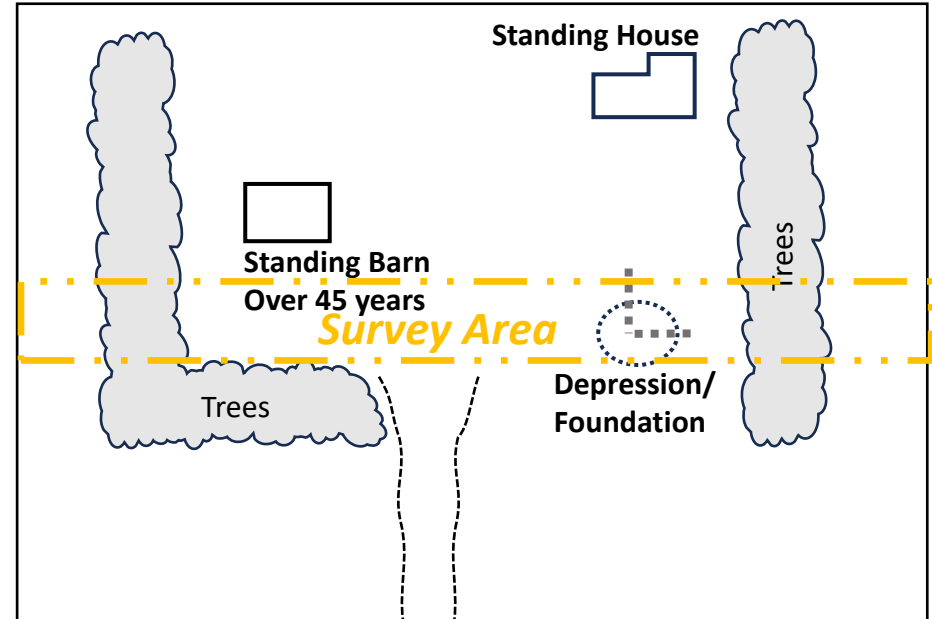
No site form but mention in report.



Architectural site lead, define at least 1 architectural feature and mention other buildings/structures and archaeological features in the site description.

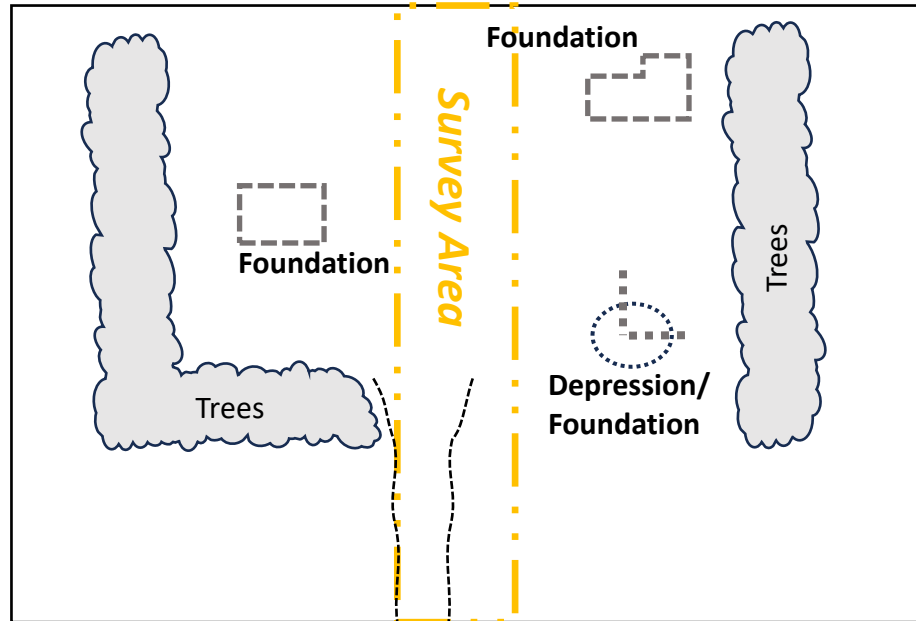


Full architectural site, fully record the barn and mention other buildings/structures and archaeological features in the site description.

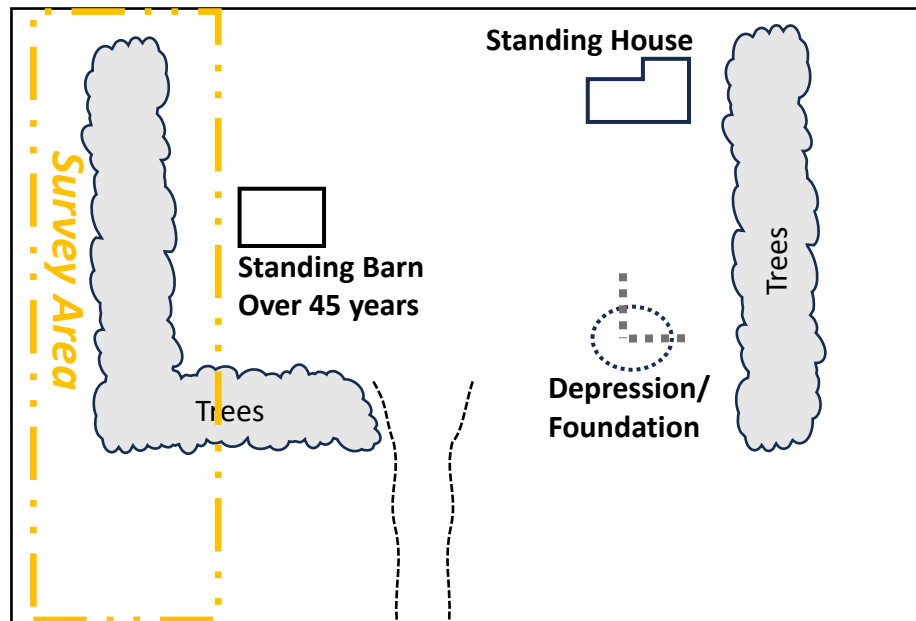


Full historical archaeological site, fully record the depression/foundation and mention other buildings/structures and archaeological features in the site description.

## Farmyard Examples

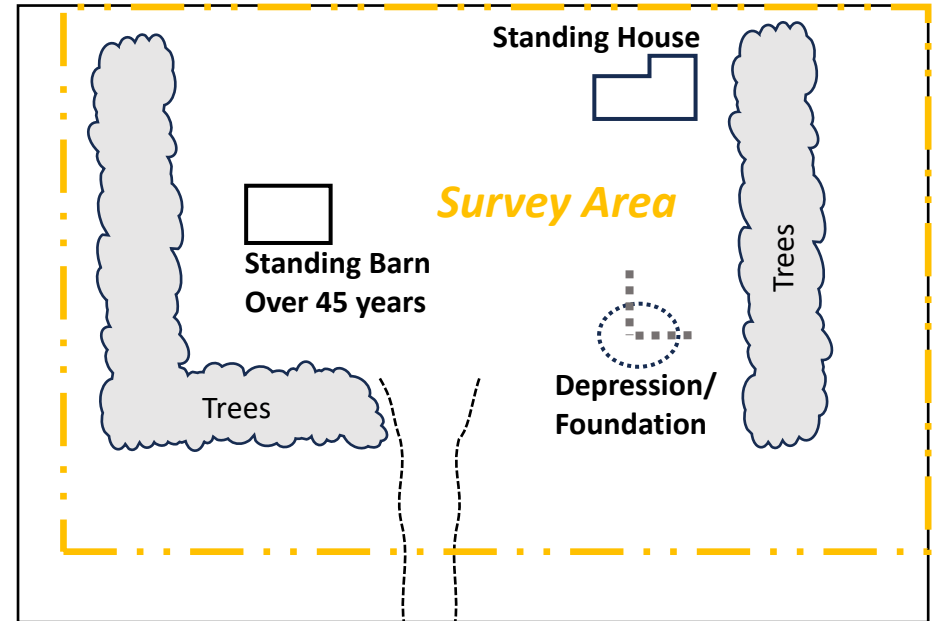


Historical archaeological site lead and mention other archaeological features in the site description.



Architectural site lead, define at least 1 architectural feature and mention other buildings/structures and archaeological features in the site description.

\*Not inclusive of all survey situations or farmyard scenarios



Full site recording, complete an architectural form and a historical archaeological form. Fully record all architectural and archaeological features.

### ***Farmyard Definition:***

The area of buildings, structures, and directly associated activity areas of a farmstead or homestead. The farmyard may or may not be enclosed by tree rows, fencing, or field edges, but it forms a defined area of domestic and agricultural outbuildings and the surrounding work yard, gardens, and activity areas.

\*Tree rows that are part of a farmstead or define the boundaries of a farmstead should be mentioned in the setting and included within the farmstead boundary.

\*Stand alone tree rows (for example, wind breaks not associated with a farmstead) are a non-site.