

The Northern Red River Study Unit.....	9.1
Description of the Northern Red River Study Unit.....	9.1
Drainage	9.1
Physiography	9.1
Climate.....	9.6
Landforms and Soils.....	9.7
<i>Upland Plains</i>	9.7
<i>Interbeaches and Deltas</i>	9.8
<i>Glacial Lake Plain</i>	9.8
<i>Terraces</i>	9.8
<i>Floodplains/Low Terraces</i>	9.8
Flora and Fauna	9.9
Other Natural Resource Potential.....	9.10
Overview of Previous Archeological Work	9.10
Inventory Projects	9.10
Test Excavation Projects	9.35
NRHP and NDSHSR	9.38
Major Excavation Projects	9.38
Other Work.....	9.41
Paleo-Indian Period.....	9.44
Paleo-Environmental Modeling.....	9.44
Cultural Chronology	9.45
Settlement Behavior	9.45
Native Subsistence Practices.....	9.47
Technologies.....	9.47
Artifact Styles	9.47
Regional Interaction.....	9.48
Historic Preservation Goals, Priorities, and Strategies	9.48
Plains Archaic Period.....	9.48
Paleo-Environmental Modeling.....	9.48
Cultural Chronology	9.49
Settlement Behavior	9.50
Native Subsistence Practices.....	9.50
Technologies.....	9.51
Artifact Styles	9.51
Regional Interaction.....	9.51
Historic Preservation Goals, Priorities, and Strategies	9.52
Plains Woodland Period	9.52
Paleo-Environmental Modeling.....	9.52
Cultural Chronology	9.54
Settlement Behavior	9.55
Native Subsistence Practices.....	9.55
Technologies.....	9.55
Artifact Styles	9.56
Historic Preservation Goals, Priorities, and Strategies	9.58
Plains Village Period	9.58
Paleo-Environmental Modeling.....	9.58

Cultural Chronology	9.58
Settlement Behavior	9.59
Native Subsistence Practices.....	9.59
Technologies.....	9.59
Artifact Styles	9.60
Regional Interaction.....	9.60
Historic Preservation Goals, Priorities, and Strategies	9.60
Equestrian/Fur Trade Period	9.60
Cultural Chronology	9.61
Settlement Behavior	9.62
Native Subsistence Practices.....	9.62
Technologies.....	9.62
Artifact Styles	9.62
Regional Interaction.....	9.63
Historic Preservation Goals, Priorities, and Strategies	9.64
Prioritization of Historic Preservation Goals in the NRRSU	9.65
Figure 9.1: Map of the Northern Red River Study Unit.....	9.2
Figure 9.1A: Shaded relief map of the Northern Red River Study Unit.....	9.3
Figure 9.2: Paleo-Indian cultural sequence in Manitoba, Canada, and juxtaposition with glacial Lake Agassiz chronology (from Buchner and Pettipas 1990:52).....	9.46
Figure 9.3: Diagram depicting the relationship between climate and culture during the late Holocene (adapted and modified from Bryson 1987:Figure 4). ..	9.53
Figure 9.4: Map depicting overlapping tribal ranges of various Equestrian period groups near the NRRSU during the 1840s (from Albers and Kay 1987:68).	9.64
Table 9.1: Townships in the Northern Red River Study Unit.....	9.4
Table 9.2: Listing of Geographical Place Names in the Red River valley and Surrounding Regions Referred to in the Early Journal Accounts (adapted from Gough 1988; Reid and Gannon 1928:199-200).....	9.7
Table 9.3: Summary of Walsh County Soil Characteristics of the NRRSU (adapted from Hetzler et al. 1972:General Soil Map).....	9.7
Table 9.4: Cultural/Temporal Affiliation of Archeological Resources in the Northern Red River Study Unit, 13-Sept-2007.....	9.11
Table 9.5: Feature Type by Landform for Archeological Sites in the Northern Red River Study Unit, 13-Sept-2007.	9.12
Table 9.6: Inventory Projects in the Northern Red River Study Unit, 5-Sept-2007.	9.14
Table 9.7: Test Excavation Projects in the Northern Red River Study Unit, 5-Sept- 2007.	9.36
Table 9.8: Major Excavation Projects in the Northern Red River Study Unit, 5- Sept-2007.....	9.39
Table 9.9: Other Work in the Northern Red River Study Unit, 5-Sept-2007. ...	9.42
Table 9.10: Sources of Background Information for the Equestrian Period in the Northern Red River Study Unit.....	9.61

The Northern Red River Study Unit

Paul R. Picha, Michael L. Gregg, and Amy Bleier
2008

The Northern Red River Study Unit (NRRSU) is located in northeastern North Dakota. The Canadian province of Manitoba borders it to the north, while the Red River of the North forms the North Dakota-Minnesota boundary to the east. The Sheyenne River and Southern Red River study units lie to the south. The Souris River Study Unit is located along the northernmost portion of the western border.

Description of the Northern Red River Study Unit

The NRRSU includes all or part of the following 10 counties: Cass, Cavalier, Grand Forks, Nelson, Pembina, Rolette, Steele, Towner, Traill, and Walsh. The NRRSU covers a 7,577 mi² area. Figures 9.1 and 9.1A depict the area. Table 9.1 is a summary of whole and partial townships included in the Study Unit.

Drainage

The Red River of the North flows northward along a sinuous course ultimately draining to Hudson Bay. It is situated in the middle of a broad glacial lake plain, 315 river miles long and 20-60 mi in width between Lake Traverse and Lake Winnipeg (Souris-Red-Rainy River Basin Commission 1972:130). The primary tributaries of the Red in the NRRSU from north to south are the Pembina (and Tongue), Park, Forest, Turtle, and Goose rivers. Many of these longer tributary streams exhibit relatively steep slopes as they drain eastward from the uplands across the Pembina Escarpment to the Red River Valley. However, within the Red River Valley, many tributaries (e.g., Salt Water and Fresh Water coulees in Grand Forks County) often have relatively flat slopes and poorly defined watersheds (cf. Doolittle et al. 1981).

Physiography

The NRRSU includes portions of the Red River Valley and Glaciated Plains physiographic regions (cf. Bluemle 1989:24). Along an east-west transect transversing the NRRSU near the international boundary; six major physiographic features are encountered (Hetzler et al. 1972:118-121, Thompson and Hetzler 1977). These are (1) the glacial Lake Agassiz plain, (2) glacial beach lines and delta deposits, (3) glacial moraine, (4) glacial meltwater trenches, (5) rolling ground moraine and till plain (including portions of the Devils Lake Basin), and (6) steep, hummocky glacial plains (Turtle Mountains).

Figure 9.1: Map of the Northern Red River Study Unit.

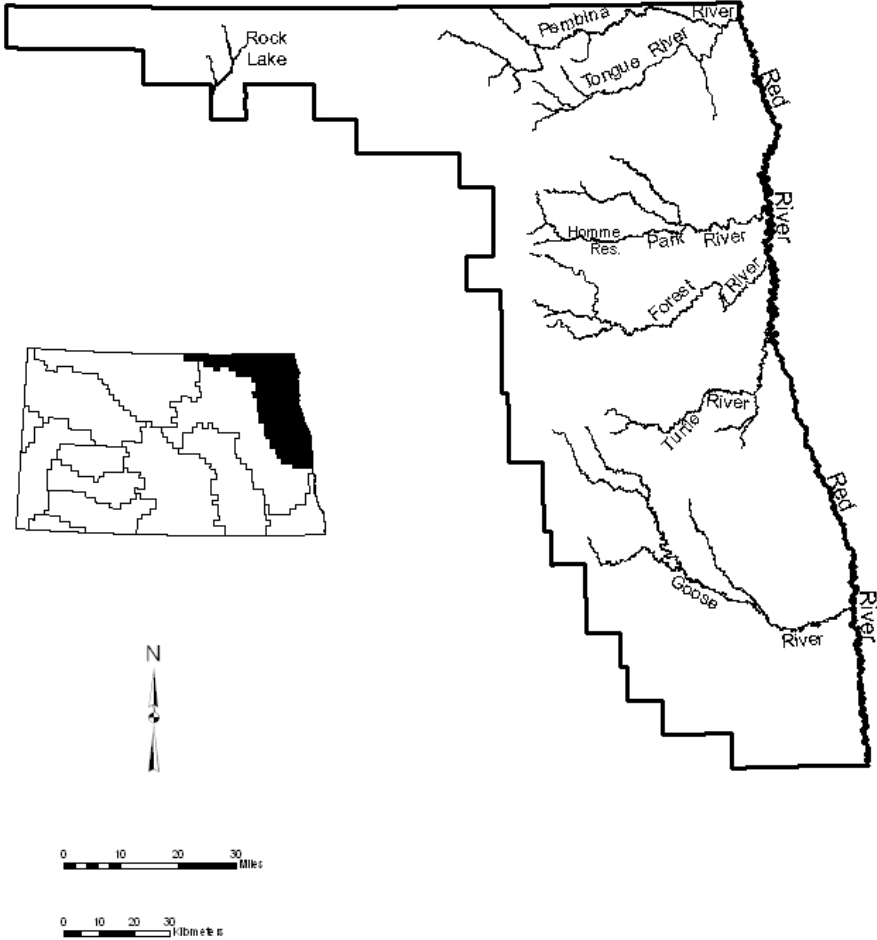


Figure 9.1A: Shaded relief map of the Northern Red River Study Unit.

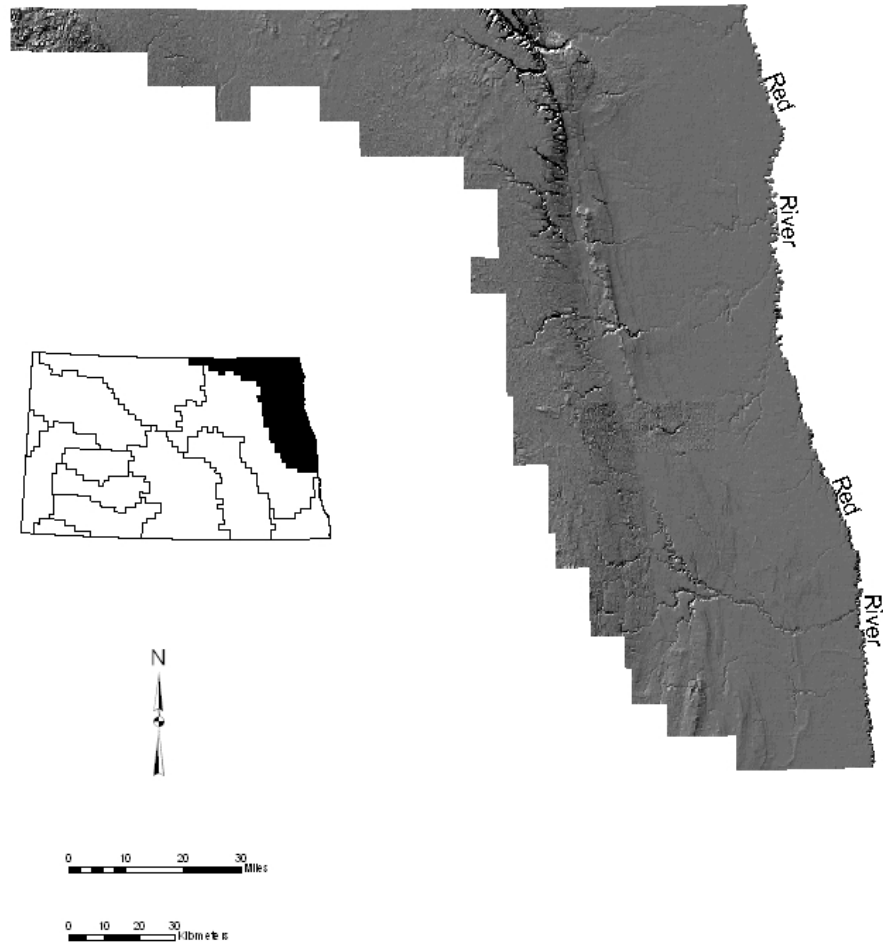


Table 9.1: Townships in the Northern Red River Study Unit.

TOWNSHIP	RANGE
142	49
142	50
142	51
142	52
143	49
143	50
143	51
143	52
143	53
143	54
144	49
144	50
144	51
144	52
144	53
144	54
144	55
145	48
145	49
145	50
145	51
145	52
145	53
145	54
145	55
146	49
146	50
146	51
146	52
146	53
146	54
146	55
146	56
147	49
147	50
147	51
147	52
147	53
147	54
147	55
147	56
148	49
148	50
148	51
148	52

TOWNSHIP	RANGE
148	53
148	54
148	55
148	56
148	57
149	49
149	50
149	51
149	52
149	53
149	54
149	55
149	56
149	57
150	49
150	50
150	51
150	52
150	53
150	54
150	55
150	56
150	57
151	50
151	51
151	52
151	53
151	54
151	55
151	56
151	57
151	58
152	50
152	51
152	52
152	53
152	54
152	55
152	56
152	57
152	58
153	50
153	51
153	52
153	53

TOWNSHIP	RANGE
153	54
153	55
153	56
153	57
153	58
154	50
154	51
154	52
154	53
154	54
154	55
154	56
154	57
154	58
155	50
155	51
155	52
155	53
155	54
155	55
155	56
155	57
155	58
156	50
156	51
156	52
156	53
156	54
156	55
156	56
156	57
156	58
156	59
157	50
157	51
157	52
157	53
157	54
157	55
157	56
157	57
157	58
158	50
158	51
158	52

TOWNSHIP	RANGE
158	53
158	54
158	55
158	56
158	57
158	58
159	50
159	51
159	52
159	53
159	54
159	55
159	56
159	57
159	58
159	59
160	50
160	51
160	52
160	53
160	54
160	55
160	56
160	57
160	58
160	59
160	60
160	61
160	62
161	50
161	51
161	52
161	53
161	54
161	55
161	56

TOWNSHIP	RANGE
161	57
161	58
161	59
161	60
161	61
161	62
161	63
161	66
162	50
162	51
162	52
162	53
162	54
162	55
162	56
162	57
162	58
162	59
162	60
162	61
162	62
162	63
162	64
162	65
162	66
162	67
162	68
163	51
163	52
163	53
163	54
163	55
163	56
163	57
163	58
163	59

TOWNSHIP	RANGE
163	60
163	61
163	62
163	63
163	64
163	65
163	66
163	67
163	68
163	69
163	70
163	71
163	72
164	51
164	52
164	53
164	54
164	55
164	56
164	57
164	58
164	59
164	60
164	61
164	62
164	63
164	64
164	65
164	66
164	67
164	68
164	69
164	70
164	71
164	72

In eastern Walsh County, the glacial Lake Agassiz plain is a broad, essentially flat lake bed filled with sediment. Elevation ranges from about 800 ft amsl along the Red River to 900 ft amsl at the western boundary of the lake basin (cf. Hetzler et al. 1972:118). A series of distinctive beach ridges or strandlines were formed by rising and lowering glacial lake levels during late Pleistocene/early Holocene times (cf. Fenton et al. 1983; Hetzler et al. 1972:120). Delta areas along with interbeach zones formed during recession and drainage of Lake Agassiz (cf. Arndt 1975:29). The Edinburg moraine marks the last glacial advance in the county. This hilly country ranges in elevation from 1100-1250 ft amsl.

Golden Valley is a north-south trending plain in Walsh County representing the remnants of a glacial river (one of several meltwater trenches) draining to glacial Lake Agassiz (Bluemle 1973; Hetzler et al. 1972:119). Elevation ranges from about 1130-1250 ft amsl. The western margin of the upper Red River valley is marked by the steep-sided Pembina Escarpment.

To the west of this escarpment lies rolling ground moraine (upland till plain). Numerous small and large lakes dot the surface. Elevation ranges from about 1,600 ft amsl in the west to 1,250 ft amsl along the Pembina Escarpment. A small portion of the Devils Lake Basin is included within the NRRSU. This closed drainage system empties into Devils Lake (Bluemle 1989:24; Ryan and Wiche 1988). The terrain is typically glaciated till plain with low relief marked by inconspicuous drainage divides.

The Turtle Mountains comprise elevated, hummocky glacial terrain situated in the northwestern corner of the NRRSU. Elevation ranges from 1800 to 2300 ft amsl. Numerous pothole lakes (e.g., Carpenter Lake) occur in these forested and undulating settings.

The ecological and physiographic diversity typifying the NRRSU natural landscape influenced both native groups and early Euro-American explorers and traders alike. Table 9.2 is a listing of some place names for prominent localities in the region.

Climate

The modern climate at Grafton in Walsh County is continental as it is located near the geographical center of North America. Winters in the NRRSU are long and cold, while summers are warm. Precipitation averages about 18.5 inches, most of which falls from April through early September (Hetzler et al. 1972:121). The mean January temperature is 0°F while that for July is 70°F (ibid.). Annual frost-free days number about 120 in the northern end of the Red River valley.

Table 9.2: Listing of Geographical Place Names in the Red River valley and Surrounding Regions Referred to in the Early Journal Accounts (adapted from Gough 1988; Reid and Gannon 1928:199-200).

Name	Description
Bois Perce (Pierced Woods)	Vicinity of Bowsmont, ND
Forks	Junction of the Red and Assiniboine rivers, present-day Winnipeg, Manitoba
Grandes Fourches (Grand Forks)	Junction of Red and Red Lake rivers, present-day Grand Forks, ND
Lac du Diable (Devils Lake)	Lake chain in Benson and Ramsey counties, ND
Hair Hills	Pembina Mountains (uplands) west of Pembina Escarpment in Pembina and Cavalier counties, ND
Panbian River (Pembina River)	Enters the Red River from the west, near Pembina, ND
Park River	Enters the Red River from the west, near Grafton, ND; named for Assiniboine buffalo park or corral nearby
Riviere aux Buttes de Sable (Sand Hill River)	Enters the Red River from the east, near Climax, MN
Riviere a la Folle Avoine (Wild Rice River)	Enters the Red River from the east, near Halstad, MN
Riviere aux Marias (Snake River)	Enters the Red River from the east, near Stephen, MN
Salt River (Forest River)	Enters the Red River from the west, northeast of Grafton, ND
Schian River (Sheyenne River)	Enters the Red River from the west, near Fargo, ND
Vulture River (Wild Rice River)	Enters the Red River from the west, south of Fargo, ND

Landforms and Soils

As outlined above, a number of prominent physiographic features occur in the NRRSU. Each of these landforms exhibit sediments derived from different sorts of glacio-lacustrine processes. Local soil formation has been influenced by various pedologic factors including slope, drainage, and parent material (cf. Holliday 1990). In Walsh County for example, four major soil groupings have been identified and each is associated with a general type of setting. Table 9.3 summarizes this information.

Table 9.3: Summary of Walsh County Soil Characteristics of the NRRSU (adapted from Hetzler et al. 1972:General Soil Map).

Physiographic Setting	Soil Characteristics
Glacial Till Plain	Formed in calcareous loam or clay loam glacial till or till-derived alluvium
Interbeach, Delta, and Valley Areas	Formed in gravelly, sandy, and loamy materials deposited as deltas, fans, beaches, interbeaches, and offshore bars
Glacial Lake Plain	Lake sediments of clays, silts, and sands
Floodplains, Low Terraces	Stratified soils formed in recent alluvium ranging from clay to loam textures

Upland Plains

Undulating glacial till plain characterizes most of the terrain west of the Pembina Escarpment (Pembina Mountains). Glacial features including moraines (e.g., the Edinburg moraine) occur as well (cf. Bluemle 1973, 1984). Soils such as Barnes, Svea, and Busey are typically represented (Hetzler et al. 1972; Thompson and Hetzler 1977). Finally, the steep-sloped terrain of the Turtle Mountains occurs in the northwestern corner of the NRRSU.

Interbeaches and Deltas

Prominent beach lines marking former levels of glacial Lake Agassiz extend along a northwest-southeast axis through the NRRSU (cf. Fenton et al. 1983; Hetzler et al. 1972:120). These areas often contain loamy and sandy soils which are particularly susceptible to erosion by wind and water (cf. Thompson and Hetzler 1977).

Glacial Lake Plain

Nearly level glacial Lake Agassiz plain terrain occurs throughout much of the eastern portions of the NRRSU (cf. Arndt 1977). Ground slope in these settings may vary only a few feet per mile except where the meandering Red River and its tributary streams have downcut. Glyndon, Bearden, and Fargo series soils are routinely mapped here.

Terraces

Terraces consist of former floodplains of rivers which lie at elevations above their modern, entrenched counterparts. Some of the present-day tributaries of the Red River occupy former glacial meltwater channels which drained into Lake Agassiz. Holocene age cut/fill sequences occur in some steep walled meltwater valleys such as along the Pembina and Park rivers where terraces set some 8-18 m (20-60 ft) above the present floodplain. Ames (1975) and Arndt (1975) illustrate this rugged Valley Wall topography which occurs in the Pembina drainage. This sort of upland terrain dissected by steep valleys along and west of the Pembina Escarpment is locally known as the "Hair Hills."

Floodplains/Low Terraces

A floodplain comprises that portion of the valley susceptible to annual flooding. In the NRRSU it includes broad expanses of bottomland along the Red River and its major tributaries. Stratified loamy and clayey alluvial soils occur in these settings. Hetzler et al. (1972) map these locations as (1) Fairdale-LaPrairie association and (2) Wahpeton-Cashel-Fargo association in Walsh County.

Geologic studies by the North Dakota Geological Survey (NDGS) and pedologic studies by the Natural Resources Conservation Service (NRCS) have been completed on countywide bases. Additionally, the North Dakota Geological Survey (NDGS) has published maps of till deposits in the Red River valley (Harris et al. 1996). These sources offer important background information concerning soils and stratigraphy on regional and local scales.

The NRCS official soil survey resources are available on the internet (NRCS 2007a, b, and c). The Web Soil Survey in particular may be useful, as it has replaced the traditional county soil survey books.

Electronic Field Office Technical Guide: <http://www.nrcs.usda.gov/technical/efotg/>
Soil Data Mart: <http://soildatamart.nrcs.usda.gov>
Web Soil Survey: <http://websoilsurvey.nrcs.usda.gov/app/>

Flora and Fauna

Much of eastern North Dakota is situated in the North American Grasslands Biome (Barkley 1977; Odum 1971). Ecologically, the Red River valley region east of the Pembina Escarpment is characterized by tall grass prairie. This vegetation community is dominated by big bluestem (*Andropogon gerardi*) and little bluestem (*Schizachyrium scoparium*) (Heidel 1986). One of the few remaining native tall grass locations is the Oakdale Prairie tract in Grand Forks County (cf. Sayler et al. 1989). Mixed grass prairie occurs on the more poorly drained beach ridges and delta locations. The mixed grass prairie extends to the west on the glaciated plains landscape. Aspen, woody shrubs, and grasses are found the slopes of the Pembina Escarpment.

Floodplain gallery forest occurs in the bottomlands along the Red River and its principal tributaries. Riparian communities are dominated by elm, ash, box elder, and bur oak. Numerous shrubs and forbs occur as understory. A variety of nuts, berries, and tubers would have been seasonally available in this ecozone (cf. Michlovic 1987:12-15; Ritterbush 1990:Appendices 1 and 2).

Ecological diversity typifies the Turtle Mountains to the west (cf. Burgess and Disrud 1969). Conifer-deciduous forest occurs in the rugged terrain surrounded by low-lying prairie. Wetlands occurred in poorly drained locations throughout the NRRSU.

The aforementioned vegetation communities provided suitable habitats for a variety of large and small fauna for native groups and later Euro-American traders (cf. Bailey 1926). Reid and Cannon (1928) provide an extensive listing of mammals and birds (following Bailey 1926) mentioned in Alexander Henry's Red River journal (Gough 1988). Large game animals included elk, deer, antelope, moose, and caribou. Bison were ubiquitous on the prairie grasslands before being killed off. Grizzly bears were also reported to frequent the Devils Lake region.

Fur-bearing mammals in the NRRSU include muskrat, beaver, rabbit, lynx, wolf, fox, ermine, mink, marten, fisher, wolverine, otter, skunk, badger, and raccoon. Pelts of these creatures are reported in regional fur trade inventories (Reid and Cannon 1928).

Waterfowl abound in riparian settings along the Red River and wetland marshes and prairie potholes throughout the NRRSU. Various species of ducks and geese were exploited for food and feathers. Eagles, hawks, and other raptors provided feathers and bone to both native groups and later arrivals as well.

Other Natural Resource Potential

The biotic diversity of the NRRSU provided hunter-gatherers throughout prehistory with a varied array of resources to exploit for food, fuel, and shelter as attested to in the early accounts (1797-1798) of traders such as Chaboillez (Hickerson 1959). The local availability of drinkable water in the NRRSU may have been a key factor encouraging settlement during xeric as well as mesic climatic spells.

In historic times, the alkali lakes and streams provided “salt” for early traders and trappers (cf. Gough 1988; Ritterbush 1991a). Hence, the Forest River is referred to as Salt River in Alexander Henry’s narratives.

Lithic resources are impoverished in portions of the NRRSU. Even small gravels are rare throughout most of the interior of the glacial lake plain. Rocks needed for cooking and sweat bathing at campsites along the Red River needed to be transported from beach zones near the margins of the glacial lake plain. Chippable stones were locally available only in the glacial till.

Overview of Previous Archeological Work

This section identifies previous archeological work conducted in the NRRSU. The discussion focuses on investigations conducted along the (1) Red River channel, (2) major tributary drainages, (3) prominent features (beach ridges), and (4) other areas.

Inventory Projects

As of 13 September 2007, there were 240 archeological sites and 290 archeological site leads and isolated finds recorded in the state computerized site data file for the Northern Red River Study Unit. The overall area of the NRRSU is 7,577 mi² and the recorded site density is one site per 31.6 mi². This low figure reflects the sporadic survey work completed rather than actual site density (cf. Michlovic 1988:56; MHS 1981).

Tables 9.4 and 9.5 present data for (1) cultural/temporal affiliation(s) and (2) feature type by the landforms on which the sites are located. Paleo-Indian remains include a Clovis point collected from 32PB25 along an upland ridge overlooking the Pembina River valley. At least three sites (32GF38, 32WA1, 32WA309) have produced Plano age materials. Middle/Late Archaic sites are better represented in the sample. Middle Woodland components (mounds and campsites) also occur. Among the best represented are Late Woodland and Late Prehistoric sites. Plains Village components are poorly known compared with the Sheyenne River and Souris River study units to the west. As with most other regions in North Dakota, the cultural/temporal affiliation for the vast majority of sites remains unknown.

Table 9.4: Cultural/Temporal Affiliation of Archeological Resources in the Northern Red River Study Unit, 13-Sept-2007.

Paleo-Indian	
Clovis	1
Plano	3
Total	4
Archaic	
Unspecified	9
Oxbow	1
McKean/Duncan/Hanna	2
Pelican Lake	2
Total	14
Woodland	
Unspecified	34
Besant/Sonota	3
Middle Woodland	8
Late Woodland	14
Arvilla	1
Blackduck	2
Sandy Lake	6
Devils Lake/Sourisford	1
Total	69
Plains Village	
Total	3
Historic	
Unspecified	3
Cheyenne	1
Chippewa	7
Euro-American	12
Total	23
Unknown	435

Table 9.5: Feature Type by Landform for Archeological Sites in the Northern Red River Study Unit, 13-Sept-2007.

	Conical Timber Lodge	Cultural Material Scatter	Earthworks	Grave	Hearth	Jump	Mound	Other Rock Features	Pit	Stone Circle	Trail	Misc.	Total
Beachline (glacial)		7		1			1		1				10
Beach or riverbank		5				2						1	8
Draw		1											1
Upland plain		81	1	2			5	1		1	1	1	93
Floodplain		15		1			1						17
Hill - Knoll - Bluff		20		7	1		5						33
Ridge		23		3			3					2	31
Spur		1											1
Terrace		56		2	3		10					2	73
Foot slope	1	1		1									3
Other		6					1						7
Lacustrian plain		4											4
Total	1	220	1	17	4	2	26	1	1	1	1	6	281

As indicated in Table 9.5, many of the recorded sites are situated in upland erosional settings (upland plain, terrace, hill-knoll-bluff, and ridge). The “Hair Hills” west of the Pembina Escarpment is ecologically diverse and offered many enticements to prehistoric settlement. Terrace settings along the major tributaries such as the Pembina and Tongue rivers provided locations which were free of seasonal flooding and offered resources (cf. Ames 1975; Biggs et al. 1984; Brown et al. 1982). Intensive surveys should be undertaken in other physiographic settings in the NRRSU in order to provide updated information concerning overall site density and the types and ages of components represented. These include: (1) River Red bottomlands, (2) Turtle Mountains locality, and (3) Glaciated Plains.

Two general recommendations merit consideration. Firstly, cultural resources monitoring of water control and recreation facilities such as Homme Reservoir should be periodically undertaken to update conditions of historic properties (US Army Corps of Engineers 1952, 1955).

Secondly, as part of background studies for large-scale inventory projects, researchers should attempt to make use of LANDSAT imagery of groundcover available for North Dakota (cf. Reid and Johnson 1978) supplemented with aerial photographic coverage (cf. US Department of the Agriculture 1937). Recent digital imagery is available from several internet sources, including (Google Earth 2008; NRCS 2008a, b, c; ND GIS 2008):

North Dakota GIS Hub (ND GIS): <http://www.nd.gov/gis/>

Natural Resource Conservation Service: <http://www.nrcs.usda.gov/>

Google Earth: <http://earth.google.com/>

Cultural resources inventory and site evaluation work has been ongoing for over a century in the NRRSU, although much of this work has not been systematic or well coordinated. Table 9.6 provides a listing of inventory projects reported for the NRRSU as of 5 September 2007. Following the table, brief summaries provide salient highlights of these investigations.

Table 9.6: Inventory Projects in the Northern Red River Study Unit, 5-Sept-2007.

Year	First Author	Second Author	Title	Ms #
n.d.	Anonymous		Report of the Survey of Part of the Bon Homme Reservoir, Walsh Co, ND	75
1890	Lewis, T.		Northwest Archeological Survey, Richland, Barnes, Oliver, McLean, Morton, Dickey, Ransom, LaMoure, Stutsman, Benson, Grand Forks, Walsh, & Pembina Counties, ND	4184
1948	River Basin Surveys		Appraisal of the Archeological Resources of Homme Reservoir, Walsh Co., Pembina River Reservoir, Cavalier Co. & Tongue River Reservoir, Pembina Co., ND	3759
1967	Cole, K.		Field Reports in Archaeology: #1-The Forest River Survey, #2-The Goose River Survey, #4-The Colony Mound, 32GF305, #5-The Turtle River Survey, #6-Miscellaneous Sites in Eastern ND	78
1974	Franke, N.		Hillsboro Airport Relocation Negative Declaration Survey Report, Traill Co., ND	236
1974	Good, K.	J. Dahlberg	An Archaeological Survey of Cass Co. Flood Prevention Project #18, Traill Co., ND	162
1974	Loendorf, L.	K. Good	Inventory of the Cultural Resources in the Turtle River Watershed Dam #9, Grand Forks Co., ND	167
1974	Loendorf, L.	K. Good	The Results of the Archaeological Survey of the South Branch of the Forest River, Grand Forks Co., ND	163
1975	Ames, K.		Archaeological Site Survey of the Pembilier Project Area, Cavalier & Pembina Counties, ND	6
1975	Loendorf, L.	M. Loendorf	The Results of the Archaeological Survey of Dam #5, Middle Branch of the Park River, Walsh Co., ND	76
1976	Dill, C.		ND Highway Department Project No. F-6-002 () 330, Grand Forks Co., Negative Declaration Survey Report	262
1976	Franke, N.		Inventory of the Known Historic Sites & Districts on the Pembina River Between Neche & Pembina, ND, Pembina Co., ND	49
1976	Franke, N.		Soil Conservation Service Roseville Drain No. 19 Negative Declaration Survey Report, Traill Co., ND	253
1976	Franke, N.		Traill County Water Management District SWC Project #1530 Cella Dam Negative Declaration Survey Report	248
1976	Loendorf, L.	A. Carmichael	The Cultural Resource Inventory of the Channelization & Project on the Middle Branch of the Park River, Walsh Co., ND	3167
1977	Dill, C.		ND Highway Department Project No. F-3-002()271, F-6-002()295 & F-6-002()317, Devils Lake, Negative Declaration Survey Report	278
1977	Dill, C.		ND Highway Department Project No. F-5-059()000, Red River Bridge at Pembina, Pembina Co., Negative Declaration Survey Report	289
1977	Loendorf, L.		The Cultural Resource Inventory for the Proposed Channelization Work on the Turtle River, Grand Forks Co., ND	12
1978	Dill, C.		Richmond Engineering, Inc., Project No. CRS 3411(52), Pembina Co., Negative Declaration Survey Report	283
1978	Fox, R.		Minnkota Power Comp. Inc. Lorfald Station Survey, Grand Forks Co., ND	160
1978	Woolworth, A.	N. Woolworth	A Report on an Archaeological & Historical Reconnaissance Survey of the Great Lakes Gas Transmission Company Pipeline Route in ND & MN	306
1979	Fox, R.		Cultural Resource Inventory of Proposed Sewage Lagoon, Lankin, ND, Walsh Co., ND	1556
1979	Loendorf, L.		Grand Forks Bridge Replacement Project #BRO 18 (3) Survey Report, Grand Forks Co., ND	726

Year	First Author	Second Author	Title	Ms #
1979	Loendorf, L.		Walsh County Highway Improvement Project #CP 5039 Survey Report	852
1980	Fox, R.		Class III Intensive Inventory for all Cultural Resources at the Proposed Development Areas Icelandic State Park, Pembina Co., ND	3030
1980	Loendorf, L.		Class III Intensive Inventory for All Cultural Resources at the Proposed Sewerage Project Locations City of Grand Forks, Grand Forks Co., ND	2964
1980	Loendorf, L.		Cultural Resource Survey of Sewer Lagoon & Lines in Clifford, ND, Traill Co., ND	1539
1980	Roberson, W.		Visit to Icelandic State Park, Pembina Co., ND	2647
1980	UND		Class III Intensive Cultural Resources Survey Step I Facility Plan, Wastewater Treatment Location, Rock Lake, Towner Co., ND	2231
1981	Flanigan, M.		Arvilla Sewage Lagoon, Grand Forks Co., ND: Class III Intensive Cultural Resources Inventory	2966
1981	Historical & Archaeological Survey, Inc.		Archaeological & Historic Cultural Resources for a Proposed Flood Control Project at Grafton, Walsh Co., ND	3166
1981	Hudak, G.		Cultural Resource Investigation of the Grand Forks/East Grand Forks Urban Study & the East Grand Forks Flood Control Project, Grand Forks Co., ND	555
1981	Hudak, G.		Cultural Resources Investigation of Homme Reservoir, Walsh Co., ND	2595
1981	Michlovic, M.		Archaeological Reconnaissance at the Northwood Wastewater Facilities Plan Site, Grand Forks Co., ND	1737
1981	Roberts, N.	J. Roberts	Historical Research Report: Summer 1981 Historical & Architectural Survey of Downtown Grand Forks, Grand Forks Co., ND	4036
1981	Weston, L.		An Intensive Inventory for all Cultural Resources in Preparation for a Proposed Treatment Site, Niagara, Grand Forks Co., ND	2961
1981	Weston, L.		An Intensive Inventory for all Cultural Resources in Preparation for Proposed County Road Grading #CRS-4006(52) & (53), Rolette Co., ND	3008
1981	Weston, L.		An Intensive Inventory for All Cultural Resources in Preparation for the Proposed Sewer Separation Project in the City of Grand Forks, Grand Forks Co., ND	2773
1982	Brown, K.	M. Brown et al.	Archaeological & Historical Reconnaissance & Literature Search of Cultural Resources Within the Pembina River Project, Pembina & Cavalier Counties, ND, Vols. I & II	3244
1982	Flanigan, M.	M. Gregg	English Coulee Rechannelization, Grand Forks Co., ND: Class II Cultural Resources Inventory	2965
1982	Kercherside, R.		Results of Class III Cultural Resources Inventory of Four Proposed Areas of Land Development at Turtle River State Park, Grand Forks Co., ND	2256
1982	Metcalf, M.		Diamond Shamrock #2 Belcourt Tribal #11-21 Well Pad & Access Route Survey Report, Rolette Co., ND	2953
1982	Metcalf, M.		Diamond Shamrock #3 Belcourt Tribal #43-30 Well Pad & Access Route Survey Report, Rolette Co., ND	2954
1982	Metcalf, M.		Diamond Shamrock #5 Belcourt Allotted #34-34 Well Pad & Access Route Survey Report, Rolette Co., ND	2955
1982	Michlovic, M.		Archaeological Reconnaissance Along the Portland Wastewater Force Main Route, Trail Co., ND	3032
1982	Vyzralek, F.	K. Schweigert et al.	Final Report: Historical & Architectural Survey of Portions of Mayville, Trail Co., ND	3842
1983	Brown, K.	M. Brown	Cultural Resource Investigations of the Walhalla Alcohol Fuel Plant Facility, Pembina Co., ND	3241

Year	First Author	Second Author	Title	Ms #
1983	Fricke, W.	M. Gregg	Class III Intensive Inventory for All Cultural Resources at the Site of the Proposed Forest River Wastewater Treatment Facility, Walsh Co., ND	2778
1983	Kuehn, D.		A Cultural Resources Inventory of a Proposed Wastewater Treatment Facility in Section 6, T151N, R53W, Arvilla, Grand Forks Co., ND	3290
1983	Riggle, R.		Supporting Detail of Recommendation about Cultural Resources in the Lower Forest River Watershed, Channel B. Project, Walsh Co., ND	3189
1984	Biggs, B.	K. Brown et al.	Phase I Archaeological & Historical Resources Investigations for the Red River of the North, Ring Levee Project, Pembina & Walsh Counties, ND	2843
1984	Pearson, J.	J. Artz	An Intensive Inventory for all Cultural Resources for Proposed Sewage Treatment & Interceptor System Expansion in Grafton, Walsh Co., ND & Addendum	3291
1984	Toom, D.		Archeological Survey of Reach 10A, Lower Forest River, Walsh Co., ND	3420
1984	Toom, D.		Archeological Survey of Selected Locations Along the Lower Forest River & Testing of the Skalicki Site (32WA10), Walsh Co., ND	3417
1984	Toom, D.		Lower Forest River Stabilization Project Archeological Investigations, Walsh Co., ND	3400
1985	Blikre, L.		A Class III Cultural Resource Inventory of the Turtle Mountain Road Improvement Project, Turtle Mountain Indian Reservation, Rolette Co., ND	3649
1985	Gnabasik, V.		United States Air Force, Devils Lake GWEN Site No. 870, Cultural Resources Survey, Walsh Co., ND	3830
1985	Gnabasik, V.		United States Air Force, Edinburg GWEN Site No. 848, Cultural Resources Survey, Pembina Co., ND	3831
1986	Floodman, M.		Final Report of the Phase I Cultural Resources Investigation of a Proposed Flood Control Project Along the Pembina River, at Neche, Pembina Co., ND	4290
1986	Larson, T.	D. Penny et al.	The 1985 Forest River Archaeological Survey, Grand Forks & Walsh Counties, ND	4060
1986	Porsche, A.		A Report on Evaluative Testing at Site 32RO2, Turtle Mountain Indian Reservation, Rolette Co., ND	4067
1986	Sato, J.		Archaeological Reconnaissance of the Western Area Power Administration's Jamestown to Grand Forks 115-kV Transmission Line Right-of-Way Located in Stutsman, Barnes, Griggs, Steele, & Grand Forks Counties, ND	4185
1987	Blasing, B.	B. Coutant	Class I & Class III Cultural Resource Surveys of Wildlife Mitigation Lands in Benson, Burleigh, Cavalier, Nelson, McLean, Ramsey, Sargent, Sheridan, Stutsman, Towner, & Wells Counties, ND	4549
1987	Granger, S.	S. Kelly	Final Report of the Grafton Inventory Project ND Cultural Resources Survey, Walsh Co., ND	4282
1987	Granger, S.	S. Kelly	Final Report of the Langdon Inventory Project ND Cultural Resources Survey 1986-1987, Cavalier Co., ND	4283
1987	Granger, S.	S. Kelly	Historic Buildings in Park River: A Partial Inventory ND Cultural Resources Survey 1986-1987, Walsh Co., ND	4285
1987	Haury, C.		Cultural Resources Survey of the Proposed Riverside Park Dam Grand Forks, Grand Forks Co., ND & East Grand Forks, MN. SWC Project #520-2.	4461
1987	Schimmer, J.		Final Report Field Reconnaissance Survey of Churches in Barnes, Ransom, Richland, Sargent & Steele Counties, ND	4280

Year	First Author	Second Author	Title	Ms #
1988	Artz, J.	C. Kordecki	Cultural Resources of the Larimore Dam Recreational Area Access Road, Grand Forks Co.: Class III Intensive Survey of Five Miles of Access Road & Subsurface Probing at Three Prehistoric Sites Near the Confluence of the North & South Branches of the Turtle River, Grand Forks Co., ND	4560
1988	Artz, J.		Remembering the Shepherds: An Archeological Survey of the Pioneer Heritage Interpretive Center Tract, Icelandic State Park, Pembina Co., ND	4868
1988	Borchert, J.		Pembina Boating Access ND Game & Fish Pembina Co., ND	4531
1988	Haury, C.		Survey & Site Testing Along the Red River of the North, For the Riverside Dam Project, Grand Forks Co., ND	4577
1988	Kordecki, C.		Larimore Dam Recreational Area Access Road Archeological Survey Results of a Class III Intensive Cultural Resources Survey of Five Miles of Access Road to the Larimore Dam Recreational Area, Grand Forks Co., ND	4536
1988	Kordecki, C.	L. Loendorf	Results of a Cultural Resource Investigation Near Neche, Pembina Co., ND	4509
1988	Schweigert, K.	R. Persinger et al.	A Cultural Resource Survey of a Proposed Rural Water System in Cavalier, Walsh & Pembina Counties, ND	4556
1988	Scott, J.	K. Schweigert	Fordville Dam Road Cultural Resource Survey Grand Forks Co., ND	4714
1989	Artz, J.		The Past in Mekinock Township: Cultural Resources of the Proposed Peacekeeper Rail Garrison, Grand Forks Air Force Base, Grand Forks Co., ND	4576
1989	Banks, K.		A Cultural Resources Inventory of Projects in Six Wildlife Development Areas, Cavalier, Nelson, Burleigh, Stutsman, Towner, & Ramsey Counties, ND	4869
1989	Floodman, M.		A Cultural Resources Inventory of the Proposed Kneeling Moose Area, Ramsey Co. & Wildlife Development Areas in Fence Construction Contract, Cavalier, Nelson, Benson, Wells, Sheridan, McLean & Burleigh Counties, ND	4850
1989	Foster, J.	L. Loendorf	Golden Lake M and I Project Cultural Resource Inventory, Stark Co., ND	4896
1989	Good, K.		ND State Highway Department Turtle River Bridge Replacement Project, Grand Forks Co. A Class II Cultural Resource Survey Project No. BRF-6-002(037)332	4863
1989	Gregg, M.	P. Picha	Survey for Historic & Archeological Properties at a PKM Electric Coop Underground & Submarine Power Cable Installation Across the Red River in Polk Co., MN & Grand Forks Co., ND	4790
1989	Schweigert, K.	R. Persinger	Agassiz Rural Water System Expansion Class III Inventory, Grand Forks Co., ND	4926
1989	Schweigert, K.		Minto Water Supply Cultural Resource Inventory, Walsh Co., Preliminary Report	4864
1990	Good, K.		Minnesota Avenue Historic Sites Survey (Minnesota Avenue & 4 th Avenue South-Grand Forks, in Grand Forks Co., ND)	5056
1990	Kiely, C.		Report of Cultural Resources in Grand Forks Co., Prepared for the Bureau of Land Management Dickinson District Office	5042
1990	Loendorf, L.		A Cultural Resource Inventory of the Boat Ramp Area to the North of Belmont Park, Traill Co., ND	5217
1990	Sanders, P.	D. Penny et al.	Results of a Class III Cultural Resource Inventory of Selected Bureau of Land Management Parcels, Ward, Renville, Cavalier, Mountrail, McKenzie, Williams, Ward, Golden Valley, Dunn, & McHenry Counties, ND, Vol. 1	5499

Year	First Author	Second Author	Title	Ms #
1990	Schweigert, K.		Genex Pipeline Company Fargo Extension, Steele, Griggs, Foster, Cass, Barnes, Eddy, Wells, Pierce, McHenry, & Ward Counties, Class III Cultural Resource Survey	5443
1990	Schweigert, K.	R. Persinger	Langdon Rural Water Users Phase II Cultural Resource Inventory Cavalier, Pembina, Ramsey & Walsh Counties ND-Final Report Vols. II & III-Also Phase II, Pts. 1 & 2	4928
1990	Wermers, G.	J. Borchert	St. Johns Road Upgrade, Rolette Co., ND (BIA Permit #AAO-249/TM/90)	5296
1991	Banks, K.		Elm River Township, Traill Co. A Cultural Resources Inventory of a US Soil Conservation Service CAT Project	5501
1991	Christensen, R.		Agassiz Rural Water System 1991 Expansion, Grand Forks Co., ND, Class III Cultural Resource Inventory	5584
1991	Larson, T.		Larson-Tibesar Associates, Inc. Cultural Resource Inventory Report for Close Construction's Cost Gravel Pit, Walsh Co., ND (NDDOT Project CDE CRS 111 (801)183)	5514
1991	Loendorf, L.		Cultural Resources Survey of the Cavalier Air Force Station Cavalier, Pembina Co., ND	5715
1991	Penny, D.		Larson-Tibesar Associates, Inc. Cultural Resource Inventory Report For the City Walhalla Propose Water Treatment Plant, Pembina Co., ND	5516
1991	Penny, D.		Larson-Tibesar Associates, Inc. Cultural Resource Inventory Report For the Strata Corporation's Borgeson Gravel Pit, Walsh Co., ND (NDDOT Project CDE CRS 111 (801) 183)	5517
1991	Ritterbush, L.		The Fur Trade of Northeastern ND in Grand Forks, Walsh, & Pembina Counties: The 1990 Fur Trade Sites Project	5405
1992	Christensen, R.	K. Good	ND Highway 200 Archaeology: Class III Cultural Resource Inventory of the Halstad Bridge Replacement, Traill Co., ND	5967
1992	Driscoll, P.	M. Gregg	A Class III Inventory of Portions of Proposed Regrading & Surfacing Project DPI-0167(001)321, Nelson Co., ND	5726
1992	Hoffbeck, S.		Riverside Park Historical/Architectural Survey Grand Forks, Grand Forks Co., ND	5739
1992	Johnson, L.	M. Hufstetler et al.	Historic Bridges in North Dakota	5920
1993	Driscoll, P.	C. Kordecki	Nelson County Road No. 4 Class III Cultural Resources Inventory	6064
1993	Kordecki, C.		A Cultural Resources Survey Along an 8.5 Section of Walsh Co., Road No. 14, ND	6011
1993	Kordecki, C.		A Cultural Resources Survey of Two Gravel Pit Locations in Grand Forks Co., ND	6012
1993	Kordecki, C.	P. Driscoll	Walsh County Roads 19 & 12A Class III Cultural Resources Inventory	6065
1993	Kulevsky, A.		Dakota Bridge Builder's Borrow Pit For Bridge Replacement BRO-50(9): A Class III Cultural Resource Inventory in Walsh Co., ND	6153
1993	Larson, T.		Larson-Tibesar Associates, Inc. Cultural Resource Inventory Report For a Mayo Construction Gravel Pit, Walsh Co., ND	5954
1993	Stine, E.		Dakota Bridge Builder's Borrow Pit For Bridge Replacement #BRC-3410(52): A Class III Cultural Resource Inventory in Pembina Co., ND	6164
1993	Stine, E.		Dakota Bridge Builder's Borrow Pit For Bridge Replacement #BRO-50(13): A Class III Cultural Resources Inventory in Walsh Co., ND & Addendum	6165
1993	Stine, E.		Polar Communications Five Year Project A Class II Reconnaissance Survey in Grand Forks, Pembina & Walsh Counties, ND	6169
1993	Swenson, F.		A Class III Cultural Resource Inventory of the Proposed Pembina State Museum Location, Pembina Co., ND	6081

Year	First Author	Second Author	Title	Ms #
1993	Toom, D.		A Cultural Resources Survey of a Small Parcel of Land Adjacent to Traill Co., Road No. 13, ND	5946
1994	Borchert, J.		Hwy 81 Improvements Archaeology: A Class III Cultural Resources Inventory Project No. NH-6-081(028)175 Ardoch to Minto in Walsh Co., ND	6401
1994	Good, K.		Weigh Scale-Larimore Corner Class III Cultural Resources Survey Project No. SNH-6-002(046)330 Weigh Station & Scale at the Intersection of Highways 2 & 18, Grand Forks Co., ND	6332
1994	Kinney, W.		Borrow Area in Pembina County Federal Aid IM-6-029(008)184 A Cultural Resource Report of an Intensive Class III Survey For Wanzek Construction	6280
1994	Kinney, W.		Glacier Barrow Area Cultural Resources Inventory, Grand Forks Co., ND	6235
1994	Kinney, W.		I-29 Borrow Area In Pembina County Federal Aid IM-6-029(008)184[GFD-12] A Cultural Resource Report of an Intensive Class III Survey for Wanzek Construction	6302
1994	Kinney, W.		The Grand Forks-Traill Water Project, Grand Forks Co. The Results of a Class III Cultural Resource Inventory For Advanced Engineering, Grand Forks	6298
1994	Kinney, W.		Two Proposed Bridge Replacement/Repair Projects in Traill Co. Project #'s BRO-49(13) & BRC-4928(53) A Cultural Resource Report of an Intensive Class III Survey for the Traill Co. Department of Highways.	6382
1994	Kordecki, C.		Golden Lake Material Borrow Area Cultural Resources Inventory Steele Co., ND	6236
1994	Kulevsky, A.		American Contracting's Hildemeyer Borrow Pit: A Class III Cultural Resource Inventory In Nelson Co., ND	6273
1994	Kulevsky, A.		American Contracting's Schmidt Borrow Pit: A Class III Cultural Resource Inventory In Nelson Co., ND	6277
1994	Kulevsky, A.		Burlington Northern Railroad Track Abandonment Between McCanna & Conway: A Class III Cultural Resource Inventory in Grand Forks Co., ND	6281
1994	Kulevsky, A.		SRI International's Nexrad Radar Site: A Class III Cultural Resource Inventory in Traill Co., ND	6324
1994	Stine, E.		American Contracting's North Schmidt Borrow Pits: A Class III Survey in Nelson Co., ND	6389
1994	Toom, D.		Bridge Replacements, Archeological Sites, & Archeological Site Surveys in ND	6249
1995	Borchert, J.		ND Department of Transportation Material Source Projects Cultural Resource Review 1989-1994	6509
1995	Borchert, J.		ND Department of Transportation Safety Project Cultural Resource Review 1992-1994	6449
1995	Hagglund, K.	J. McCarthy	A Phase I Cultural Resources Investigation of Proposed Levee & Floodwall Alignments City of Grand Forks, ND	6445
1995	Kinney, W.		Bridge (118-15) Replacement Project In Steele Co., ND. A Report of a Class III Cultural Resource Inventory for the Proposed County Highway Project DPI-0036(002)462	6623
1995	Kinney, W.		A "Low Water Crossing" Survey, a Report of a Class III Cultural Resource Inventory for a Proposed Bridge Project Near Mayville, Traill Co., ND	6617
1995	Kinney, W.		Alexander Henry Rest Area, Walsh County. Project #STI-6-029(020)175, A Cultural Resource Report of an Intensive Class III Cultural Resource Inventory For Johnson & Laffen Architects, Ltd.	6467

Year	First Author	Second Author	Title	Ms #
1995	Kinney, W.		Bridge Replacement Survey: A Class III Cultural Resource Inventory for the Emergency Mt. Carmel Project, Cavalier Co., BRC-1006(58); Bridge 129-05	6545
1995	Kinney, W.		Elm River Bridge, a Class III Cultural Resource Inventory Report for an Alternate Location for the Proposed Bridge Replacement Project DSR#81999 in Trail Co., ND	6626
1995	Kinney, W.		Jessie Expansion, Griggs County Dakota Water Users, Inc. The Results of a Class III Cultural Resource Inventory For Advanced Engineering and Environmental Services, Inc.	6468
1995	Kinney, W.		Mount Carmel Dam & Reservoir, Cavalier County. Project #199560120. A Cultural Resource Report of an Intensive Class III Survey for the ND State Water Commission.	6469
1995	Kinney, W.		Prospect Avenue Bridge Survey. A Class III Cultural Resource Inventory Report for Project #BRC-5025(51), for the Walsh County Highway Department, Walsh Co., ND	6635
1995	Klinner, D.		Turtle River State Park Cultural Resources Inventory, Grand Forks Co., ND	6464
1995	Kordecki, C.		Log Piles of Cass, McHenry, Ransom & Walsh Counties ND, Cultural Resources Inventory	6565
1995	Kordecki, C.		Pembina Border Station Expansion Cultural Resources Inventory, Pembina Co., ND	6461
1995	Roise, C.	J. Lauber et al.	Development of the Grafton State School, Walsh Co., Grafton, ND	7099
1996	Crane, B.	C. Shields et al.	Grand Forks Air Force Base in Grand Forks Co. Cultural Resources Survey Class III Intensive Archaeological Inventory	6813
1996	Kinney, W.		A Bridge Replacement Project in Cavalier Co., ND. A Class III Cultural Resource Inventory for NDDOT Project #DPI-0036(003)101. Bridge #144-26	6853
1996	Kinney, W.		A Class III Cultural Resource Inventory for a Legal Drain Revision in Cass County Near Gardner, ND. For Moore Engineering, Inc. of West Fargo, ND (Proj. #7855)	6807
1996	Kinney, W.		Arrowhead Construction, Inc. Borrow Area. A Class III Cultural Resource Inventory for NDDOT Project #'s NH-6-005(013)312 & SS-6-018(033)224 in Cavalier Co., ND	6706
1996	Kinney, W.		Borrow Area Survey Report. A Class III Cultural Resource Inventory Report for NDDOT Project #BRC-5025(51). Walsh Co., ND	6846
1996	Kinney, W.		Cavalier County Bridge Replacement Project For NDDOT Project #DPI-0036(003)102. A Class III Cultural Resource Inventory Report	6847
1996	Kinney, W.		Steele County Bridge #119-23. A Class III Cultural Resource Inventory for a Bridge Replacement With Minor Approach Reshaping Project in Steele Co., ND. For NDDOT Project #DPI-0036(003)461	6850
1996	Kinney, W.		Three Borrow Pit Areas West of Langdon, ND in Cavalier County. Results of a Class III Cultural Resource Inventory for NDDOT Project #CER-1013(53) Mikkelson Brothers Construction, Langdon, ND	6808
1996	Kinney, W.		The Results of an Intensive Surface Reconnaissance & Shovel Probes for Determining the Boundaries of 32CV210. For Cavalier County Bridge Replacement Project #BRC-1006(57)	6678
1996	Kulevsky, A.		Gravel Products' Ramsey Gravel Pit: A Class III Cultural Resource Inventory in Walsh Co., ND	6729
1996	Olson, B.		USDA Rural Economic & Community Development Chris Hettervig Property Traill County ND a Cultural Resources Inventory	6645

Year	First Author	Second Author	Title	Ms #
1996	Wermers, G.		The Central Power Electric Cooperative Transmission Line & Substation Project in Rolette Co., ND: Results of a Class III Cultural Resources Inventory	6803
1997	Ketz, K.	T. Dolence	Phase I Cultural Resources Investigation of the Additional Levee & Floodwall Alignments, a Road Raise, Two Pump Stations, & a Diversion Ditch for English Coulee Proposed for the City of Grand Forks, Grand Forks Co., ND	6849
1997	Kinney, W.		Dakota Water Users-Aneta Expansion A Class III Cultural Resource Inventory of Approximately 4.5 Miles of Proposed Water Pipeline in Nelson, Griggs, & Steele Counties, ND	6923
1997	Kinney, W.		Nelson County Borrow Area Expansion. A Class III Cultural Resource Inventory Report for NDDOT Project # FER-6-032(025)139	7021
1997	Kinney, W.		Proj. #4670 - South End Drainway Phase 2. A Class III Cultural Resource Inventory Report in Grand Forks, Grand Forks Co., ND	7056
1997	Kinney, W.		The South Grand Forks Drainage Project No. 4440 A Class III Cultural Resource Inventory of the Proposed Route	6918
1997	Kinney, W.		Two Proposed Borrow Areas for NDDOT Number DPI-0036(003)491. A Class III Cultural Resource Inventory Report, Traill Co., ND	7024
1997	Klinner, D.		Walsh Co., Bridge 50-138-10.1 Replacement Project in Sections 20 & 21, T157N, R53W	7015
1997	Larson, T.	S. Rothwell et al.	Results of an Intensive Cultural Resource Inventory Conducted for the Proposed Walhalla/Neche/Pembina River Branch Expansion in Cavalier and Pembina Co., ND	6874
1997	Larson, T.		Results of an Intensive Cultural Resource Inventory of the Kosmatka Property, Walsh Co., ND	7045
1997	Larson, T.		The 1997 Addendum to: Results of an Intensive Cultural Resource Inventory Conducted for the Proposed Walhalla/Neche/Pembina River Branch Expansion, Pembina & Cavalier Counties, ND	7079
1997	Olson, B.		Thomas Solseng Property Class III Cultural Resource Inventory, Grand Forks Co., ND	6962
1997	Penny, D.	T. Larson	A Cultural Resource Inventory of the Arnold Tveit Property, Grand Forks Co., ND	7080
1997	Scott, J.		Polar Communications 1997 Construction Survey: Level II & III Cultural Resources Inventories in Four Northeastern Counties: Grand Forks, Nelson, Ramsey, & Walsh, ND	7049
1997	Wermers, G.		Traill County Bridge Replacement Project, Structure Number 49-126-26.0: Results of the Class III Cultural Resources Inventory	6914
1998	Kinney, W.		A Class III Cultural Resource Inventory of Both ROWs of ND Highway 200 From Finley, ND East to its Intersection With ND Highway 18 in Steele & Traill Counties, ND. NDDOT Project No. NH-6-200(021)359	7269
1998	Kinney, W.		A Class III Cultural Resource Inventory of Both ROWs of US Highway 281 From the Intersection with ND Highway 17 at Cando, ND North to the Intersection with ND Highway 5 at Rock Lake in Towner County	7271
1998	Kinney, W.		Cavalier County Bridge Replacement Project Number BRC-1006(63), Bridge No. 123.05.0. Class III Cultural Resource Inventory	7301
1998	Kinney, W.		City of Pembina Sludge Pond Relocation Project. A Class III Cultural Resource Inventory of the Proposed Pond Location in Pembina, Pembina Co., ND	7142
1998	Kinney, W.		Class III Cultural Resource Inventory of a Proposed Six Acre Mobile Home Park and Housing Complex in Pembina, Pembina Co., ND	7143

Year	First Author	Second Author	Title	Ms #
1998	Kinney, W.		ND Highway 38 Rows Survey. A Class III Cultural Resource Inventory From Page, ND North to ND Highway 32. Cass & Steele Counties, ND	8733
1998	Kinney, W.		Two Proposed Walsh County ND Borrow Pits for NDDOT Project Number NH-6-002(053)329. A Class III Cultural Resource Inventory Report	7171
1998	Kinney, W.		US Highway 2, Class III Cultural Resource Inventory of the North & South ROWs Between RP 329.073 & RP 341.673. NDDOT Project No. NH-6-002(053)329	7173
1998	Kinney, W.		Walhalla Industrial Park, A Class III Cultural Resource Inventory of the Proposed 52 Acre Construction Site, Pembina Co., ND	7190
1998	Klinner, D.		Steele County Bridge Replacement Project-Structure No. 122-05.0	7166
1998	Larson, T.		Results of a Class II & Class III Cultural Resource Inventory for NDDOT Project Area SS-6-018(028)152 Grand Forks Co., ND	7283
1998	Larson, T.		Results of a Class II & Class III Cultural Resource Inventory for NDDOT Project Areas IM-6-029(042)168 and SIM-6-029(023)168, Walsh Co., ND	7285
1998	Larson, T.		Results of a Class II/Class III Cultural Resource Inventory for the All Seasons Water Project in Cavalier, Rolette & Towner Counties, ND	7351
1998	Larson, T.		Results of a Class III Cultural Resource Inventory for NDDOT Project Area NH-6-081(046)191, Pembina & Walsh Counties, ND	7183
1998	Larson, T.		Results of a Class III Cultural Resource Inventory for NDDOT Project Area SS-6-066(012)137, Pembina Co., ND	7182
1998	Rothwell, S.		Report 1 for the 1998 Field Season: Cultural Resource Inventories for the Cass Rural Water System, Cass Co., ND	7223
1998	Swenson, F.	P. Picha	Investigations at Dumoulin Mission & Cemetery Site (32PB100), Pembina Co., ND	7236
1999	Bales, J.		Bronson Property Cultural Resources Inventory for the University of ND, Grand Forks Co., ND	7388
1999	De Leon, M.		Cultural Resources Assessment for the Defense Logistics Agency Defense Fuel Support Point Grand Forks, Grand Forks Co., ND	7338
1999	Ferris, K.		Project Walking Shield: A Cultural Resources Inventory of 25 Proposed Tribal Homesites on Turtle Mountain Chippewa Trust Lands in Rolette Co., ND	7533
1999	Flemmer, D.		A Class III NRCS Cultural Resource Survey Report of the Fitzsimmonds Tree Planting Conservation Practice, Pembina Co., ND	7371
1999	Flemmer, D.		A Class III NRCS Cultural Resource Survey Report of the Longtin Farms Tree Planting Conservation Practice, Pembina Co., ND	7372
1999	Flemmer, D.		A Class III NRCS Cultural Resource Survey Report of the Olson Tree Planting Conservation Practice, Grand Forks Co., ND	7373
1999	Flemmer, D.		A Class III NRCS Cultural Resource Survey Report of the Tetrault Tree Planting Conservation Practice, Pembina Co., ND	7375
1999	Flemmer, D.		Gapp Bank Stabilization Class III Cultural Resource Survey and Subsurface Exploration Report, Pembina Co., ND	7505
1999	Isern, T.	K. Nesemeier	Wrought Iron Cross Cemeteries in ND-Continuing Survey, 1998-99	7725
1999	Jackson, M		Red River Basin Riparian Project Cultural Resources Survey along the Turtle River, Near Mekinock, Grand Forks Co., ND	7397

Year	First Author	Second Author	Title	Ms #
1999	Jackson, M.		A Traill County Bridge Replacement Cultural Resources Survey, Near the City of Portland, Traill Co., ND: NDDOT Project. No. DPI-0036(005)491	7354
1999	Kinney, W.		A Proposed Bridge Replacement Over the North Marais River in Southeast Walsh Co., ND (NDDOT Project No. DPI-0036(005)501	7370
1999	Kinney, W.		Proposed Pembina County Bike Path Construction, Pembina Co., ND, A Class III Cultural Resource Inventory and Report. NDDOT Project Nos. TEO34(11) & TEO34(12)	7368
1999	Kinney, W.		Walsh Rural Water District Class I, II, & III Cultural Resource Inventory in Walsh Co., ND, November, 1988	7312
1999	Kinney, W.		Wetlands Mitigation Area in Sections 17 & 20, T152N, R51W, Grand Forks Co., ND. A Class III Cultural Resource Inventory	7448
1999	Kordecki, C.		Traill County Bridge Replacement Cultural Resources Inventory Near Galesburg, ND	7461
1999	Larson, T.		A Report on Cultural Resource Investigations for Dakota Water Users, Inc.: The Class II Sample Survey for the Sharon System Exchange	7415
1999	Morrison, J.		Hansboro Bridge Replacement, Bridge Number 101-06.0: A Class III Cultural Resource Inventory, Towner Co., ND	7376
1999	Travis, L.		Really Wet Wetland Survey: A Class III Cultural Resource Inventory, Towner Co., ND	7441
2000	Bluemle, W.		DeMers Gravel Pit: A Class III Cultural Resource Inventory, Rolette Co., ND	7554
2000	Bluemle, W.		Ducks Unlimited: A Class III Cultural Resource Inventory, Towner Co., ND	7622
2000	Bluemle, W.		Hansboro Road East: A Class III Cultural Resource Inventory, Towner Co., ND	7752
2000	Good, K.		Pioneer Construction, Inc. Walsh County Aggregate Pit Class III Cultural Resource Inventory	7627
2000	Jackson, M.		Cavalier County Bridge Replacement Project BRC-1006(64) Cultural Resources Survey, Cavalier Co., ND: Bridge Number 10-136-08.0	7550
2000	Jackson, M.		Cavalier County Bridge Replacement Project BRO-10(8) Cultural Resources Survey, Cavalier Co., ND: Bridge Number 10-115-05.0	7582
2000	Jackson, M.		Walsh County Bridge Replacement Projects CPF-5001(00) and CPF-5002(00) Cultural Resources Survey, Walsh Co., ND: Bridge Numbers 50-154-18.0 & 50-154-15.0	7709
2000	Kinney, W.		A Grand Forks County, Borrow Pit for NDDOT Project U-CMU-6-986(057)060: SER-6986(051)054 & CPU-6986(002)062. A Class III Cultural Resource Inventory Report	7756
2000	Kinney, W.		A Proposed Borrow Area for NDDOT Project Number DPI-0036(004)461 in Steele Co., ND. A Class III Cultural Resource Inventory Report	7766
2000	Kinney, W.		A Proposed Walsh County ND Road Realignment. Class III Cultural Resource Inventory Report. NDDOT Project No. SC-5047(53)	7589
2000	Kinney, W.		Bridge #136-02.0, a Walsh County ND Bridge Replacement Project NDDOT Project #DPI-0036(006)501. Cultural Resource Inventory Report	7590
2000	Kinney, W.		Bridge Replacement Project DPI-0036(006)502 in Walsh Co., ND. A Class III Cultural Resource Inventory Report	7591
2000	Kinney, W.		Finley Industrial Park, Finley, Steele Co., ND. A Class III Cultural Resource Inventory Report for the Proposed Street, Sewer & Water Line Locations	7557

Year	First Author	Second Author	Title	Ms #
2000	Kinney, W.		Lagoon Expansion at Hunter, Cass Co., ND, Sewer Improvement District #2000-1. A Class III Cultural Resource Inventory Report	7631
2000	Kinney, W.		Proposed Telephone Cable Routes in Hillsboro, Traill Co., ND. A Class III Cultural Resource Inventory Report	7649
2000	Kinney, W.		Two Proposed Pembina County Borrow Areas for NDDOT Project Number TEO34(11) & TEO34(12). A Class III Cultural Resource Inventory	7758
2000	Kinney, W.		Two Walsh County ND Borrow Areas NDDOT Project #NH-6-081(028)175 a Class III Cultural Resources Inventory Report	7592
2000	Klinner, D.		Tri-Co., Water Users, Inc. Phase 1 System Improvements, Contract 99-1, Class III Inventory Results	7658
2000	Kordecki, C.	C. Jackson	Audubon Mitigation Tracts Cultural Resources Inventory in Cavalier, Grand Forks, McIntosh, McLean, & Sheridan Counties, ND	9088
2000	Kordecki, C.		Park River Bible Camp Cultural Resources Inventory, Red River Basin Riparian Project, Walsh Co., ND	7657
2000	Kordecki, C.		Transmission Pipelines Cultural Resource Inventory For the Clearwell & Transmission Pipelines Project, City of Grand Forks, Grand Forks Co., ND	7601
2000	Larson, T.		Results of a Class II/Class III Cultural Resource Inventory for the All Seasons Water Project: System IV, Phase II, Rolette & Towner Counties, ND	7560
2000	Larson, T.	D. Penny	Results of a Phase I Cultural Resource Investigation for Proposed Levee & Floodwall Alignments at the City of Grand Forks, Grand Forks Co., ND	7561
2000	Morrison, J.		NDDOT Highway 18: A Class III Cultural Resource Inventory, Grand Forks Co., ND	7687
2000	Morrison, J.		NDDOT Highway 32: A Class III Cultural Resource Inventory, Grand Forks & Walsh Co., ND	7708
2000	Morrison, J.		NDDOT Highway 81: A Class III Cultural Resource Inventory, Pembina Co., ND	7688
2000	Stine, E.		Farm Services Agency Bushaw & Callahan Farmsteads: A Class III Cultural Resources Inventory in Grand Forks Co., ND	7754
2000	Toom, D.	M. Jackson	Red River Basin Riparian Project Cultural Resources Surveys of the Richard Freeman Property in Cass Co., & the Roger Weinlaeder Property in Walsh Co., ND	7774
2001	Bluemle, W.		Four Towers Survey: A Class III Cultural Resource Inventory, Grand Forks, Ramsey & Stutsman Counties, ND	7961
2001	Bluemle, W.		Living Snow Fence Survey: A Class III Cultural Resource Inventory, Benson, Cass, Kidder, Stutsman & Walsh Counties, ND	7842
2001	Borchert, J.		Highway 281 Safety Improvements Dunseith to the Canadian Border Class III Cultural Resource Inventory, Rolette Co., ND	7971
2001	Jackson, M.		Steele County Bridge Replacement Project BRC-4604(054) Cultural Resources Survey, Steele Co., ND: Bridge Number 46-109-05.0	7888
2001	Kinney, W.		A Bradshaw Gravel Walsh County, ND Gravel Pit & Plant Site. A Class III Cultural Resource Inventory Report. NDDOT Project No. MDF-6-999(010)	7790
2001	Kinney, W.		A Cass County Borrow Area for NDDOT Project Number SC-0910(55). A Class III Cultural Resource Inventory Report	7877
2001	Kinney, W.		A Proposed Nelson County Tank Site for the Tri Co., Water District W.O. 3056.007. A Class III Cultural Resource Inventory Report	8102

Year	First Author	Second Author	Title	Ms #
2001	Kinney, W.		Class III Cultural Resource Inventory of a Borrow Area For NDDOT Project Number SC-5029(052) in Walsh Co., ND	8066
2001	Kinney, W.		Class III Cultural Resource Inventory of Both Sides of ND #18 From Its Intersection with ND #17 & Extending For Four Miles North, Walsh Co., ND	8067
2001	Kinney, W.		Highway 81, Grand Forks Co.-Gateway Drive to North of Interchange. Class III Cultural Resource Inventory of Both Sides of Highway ROW. NDDOT Project Number SU-SS-6-081(054)945	8014
2001	Kinney, W.		Highway 81, GF Co -Intersection of Highway 81 & Grand Forks County Highway 33 at Manvel Northwest to Levant Twp, in Section 24. A Class III Cultural Resource Inventory	8013
2001	Kinney, W.		Two Walsh County ND Bridge Replacement Projects. A Class III Cultural Resource Inventory Report For NDDOT Project Numbers BRO-50(015) & SC-5029(052)	7885
2001	Klinner, D.		Tri-County Water Users, Inc. Phase 1 System Improvements, Contract 99-1-Results of the Class III Inventories for Pipeline Reroutes	7966
2001	Kulevsky, A.		Farm Services Agency Gratton Farmstead: A Class III Cultural Resource Inventory in Grand Forks Co., ND	7857
2001	Madigan, T.		Testing for Deeply-Buried Archaeological Resources at a Proposed Borrow Area in the City of Grand Forks, Grand Forks Co., ND	8265
2001	Morrison, J.		Cass County Highway 26: A Class III Cultural Resource Inventory of Nine Miles in Cass Co., ND	8086
2001	Morrison, J.		Grandin Tower Site: A Class III Cultural Resource Inventory, Traill Co., ND	7999
2001	Schmidt, A.		Intensive Level Historical Architectural Survey for the University of North Dakota, Grand Forks Co., ND	8856
2001	Toom, D.		Grand Forks County Bridge Replacement Project BRC-1830(051) Cultural Resources Survey Grand Forks Co., ND Bridge Number 18-142-30.0	8064
2001	Toom, D.		Traill County Bridge Replacement Project BRO-049(014) Cultural Resources Survey, Traill Co., ND: Bridge Number 46-121-17.0	8105
2002	Bluemle, W.		Anderson Borrow Area & Access Road: A Class III Cultural Resource Inventory, Steele Co., ND	8266
2002	Bluemle, W.		Bring Gravel Pit: A Class III Cultural Resource Inventory, Traill Co., ND	8267
2002	Bluemle, W.		Hannestad Borrow Area: A Class III Cultural Resource Inventory, Steele Co., ND	8272
2002	Bluemle, W.		Jacobson Borrow Area: A Class III Cultural Resource Inventory, Steele Co., ND	8275
2002	Bluemle, W.		Meldahl Borrow Area: A Class III Cultural Resource Inventory, Steele Co., ND	8357
2002	Borchert, J.		Addendum to Metcalf Archaeological Consultants Report: NDDOT Highway 18: A Class III Cultural Resource Inventory, Grand Forks Co., ND: Recording & Evaluation of Bridge #18-182.408	8120
2002	Borchert, J.		Class II Cultural Resource Inventory of a Hot Bituminous Overlay Project on Highway 18, Grand Forks & Traill Counties, ND	8257
2002	Borchert, J.		Morais River Bridge on Highway 54, NDDOT Class III Inventory Report, Walsh Co., ND	8122
2002	Hafermehl, L.		ND Highway Bridge Number 18-182.408 Grand Forks Co., ND: Photographic Documentation of the Structure & a Brief Narrative Describing its Original & Altered Appearance & Reasons for its Projected 2003 Replacement	8453

Year	First Author	Second Author	Title	Ms #
2002	Hafermehl, L.		ND Highway Bridge Number 81-164.184 Grand Forks Co., ND Photographic Documentation & a Brief Narrative Description of the Structure	8454
2002	Hafermehl, L.		ND Highway Bridge Number 81-946.235 Grand Forks Co., ND: Photographic Documentation of the Structure & a Brief Narrative Describing its Appearance & Reasons for its Projected 2003 Replacement	8455
2002	Jackson, M.		Bridge Replacement Project BRO-50(016) Cultural Resources Survey, Walsh Co., ND: Bridge No. 50-144-18.1	8850
2002	Kinney, W.		A Class III Cultural Resource Inventory of a Cavalier Co., Bridge Project. NDDOT Project No. BRO-10(013) & Addendum	8160
2002	Kinney, W.		Five Proposed Buried Telephone Line Corridors in Traill Co., ND for Halstad Telephone Company, (BER/EP 2002 Construction Work Plan) A Class III Cultural Resource Inventory Report	8125
2002	Kinney, W.		Loretel Systems, Inc., Proposed Buried Cable Construction in Traill & Cass Counties of ND. A Class III Cultural Resource Inventory Report	8254
2002	Kinney, W.		Roadway Improvements, North Columbia Road & Gateway Drive in Grand Forks, ND. A Class III Cultural Resource Inventory, GF Co., ND	8299
2002	Kinney, W.		Second Street South Reconstruction in Devils Lake, Ramsey Co., ND. A Class III Cultural Resource Inventory Report	8366
2002	Kinney, W.		Two Walhalla Playground Area Locations, A Class III Cultural Resource Inventory of Two Locations in Walhalla, Pembina Co., ND	8300
2002	Morrison, J.		Living Snow Fence Survey of 28 Sites in Adams, Barnes, Bowman, Emmons, Golden Valley, Hettinger, Kidder, McIntosh, Mountrail, Oliver & Walsh Co., ND: A Class III Cultural Resource Inventory	8187
2002	Nienow, J.	K. Breakey	Class III Cultural Resources Inventory Between Highway 1 and Milton (SS-3-066(016)078) on Both Sides of Highway 66, Cavalier Co., ND	8428
2002	Stine, E.		Eight Tree Planting Sites: A Class III Cultural Resource Inventory in Bottineau, Burke, Burleigh, Cass, Grand Forks, Ransom, & Pembina Counties, ND	8391
2002	Wermers, G.		Tri-Co., Water District Phase II Expansion Project, Walsh, Grand Forks, Nelson, Ramsey & Steele Counties, ND: Class II and III Inventory Results	8419
2003	Bluemle, W.		Polar Communications Mutual Aid Corporation & Polar Telecommunications, Inc., Fiber Optic Cable Survey: A Class I Literature Search & Class III Cultural Resources Inventory of CS, CV, GF, GG, NE, PB, RY, ST, TR & WA Counties, ND	8427
2003	Christensen, B.		Rob Vollrath, Elmer Hillesland & Don Hillesland Wetland Mitigation Sites Class III Cultural Resource Inventory, Nelson & Towner Co., ND	8449
2003	Florin, F.		Phase I Cultural Resources Investigation of Two Holding Ponds at Grand Forks, Grand Forks Co., ND	8628
2003	Kinney, W.		Bridge Replacement Project BRC-1808(054) at Manvel, ND. A Class III Cultural Resource Inventory	8730
2003	Kinney, W.		Class III Cultural Resource Inventory For Project HSU-6-986(067)070, The Columbia Road Guardrail & Riprap Project, Grand Forks Co., ND	8734
2003	Kinney, W.		Phase I Cultural Resource Investigation of a Revised Levee Alignment in Grand Forks, ND	8731
2003	Kordecki, C.	C. Jackson	Audubon Mitigation Tracts Cultural Resources Inventory in Cavalier, Sheridan & Pembina Counties, ND, 2001	9082

Year	First Author	Second Author	Title	Ms #
2003	Kulevsky, A.		Highway 2 Slope Flattening RP 320.9-322.7 Cultural Resource Inventory Near Niagara, Grand Forks Co., NDDOT Project No. HSP-6-002(064)320	8685
2003	Kulevsky, A.		Highway 66 Slope Flattening Class III Cultural Resource Inventory Near Milton, Cavalier Co., NDDOT Project No. HSP-6-066(014)094	8686
2003	Kulevsky, A.		HSP-8-999(011) Class III Cultural Resources Inventory of T-Intersection Improvements at Three Locations in Eastern ND, Cass & Traill Counties	8495
2003	Morrison, J.		Cavalier Borrow Area: A Class III Cultural Resource Inventory in Pembina Co., ND	8587
2003	Stark, W.	A. Vermeer	Grand Forks Central Business District Intensive Survey Grand Forks Co., ND	8696
2004	Bailey, T.		Phase I Cultural Resources Investigation of Two Pedestrian Bridge Locations in Grand Forks Co., ND	8980
2004	Bleier, A.		Highway 32: A Class III Cultural Resource Inventory, Steele Co., ND	8910
2004	Bluemle, W.		Goose River Bridge: A Class III Cultural Resource Inventory in Traill Co., ND	9085
2004	Christensen, B.		ROW-089 Class III Inventory Report Steele Co., ND	8793
2004	Florin, F.		Phase I Cultural Resources Investigation of the Proposed Adams Pit Borrow Area in Grand Forks, Grand Forks Co., ND	8940
2004	Hiemstra, D.		Highway 2 East, Niagara to Michigan: A Class III Cultural Resource Inventory, Nelson Co., ND	8939
2004	Hiemstra, D.		Highway 2 West, Michigan to Mapes: A Class III Cultural Resource Inventory, Nelson Co., ND	8911
2004	Jackson, M.		Walsh County Bridge Replacement Project BO-50(017) Cultural Resources Survey, Walsh Co, ND: Bridge Number 50-135-09.0	8876
2004	Kinney, W.		Class III Cultural Resource Inventory For Pipeline Improvements, North Valley Water District (NVWD), Cavalier, Pembina and Walsh Co., ND	8909
2004	Kinney, W.		Grand Forks, ND-40th Avenue South Construction, Between Ruemmele Road and S. 20 th Street. A Class III Cultural Resource Inventory Report in Grand Forks Co., ND	9111
2004	Kinney, W.		Grand Forks, ND-55 th Avenue South Construction, A Class III Cultural Resource Inventory Report. NDDOT Project #SU-6-986(070)074, Grand Forks Co., ND	8960
2004	Kinney, W.		Grand Forks/East Grand Forks Flood Protection Project, Phase 1 (Class III) Cultural Resources Investigation of Detention Ponds H14 & H20 at Grand Forks Co, ND	8767
2004	Kinney, W.		Results of a Class III Cultural Resource Inventory NDDOT Project Number SS-6-066(013) 138 in Pembina Co., ND & Kittson Co., MN	8796
2004	Kordecki, C.	M. Hufstetler	Burlington Northern Santa Fe Railway Company Abandonment at Four Locations in ND, Class I & Class II Cultural Resources Inventories, Grand Forks, Barnes, Griggs, Bottineau & Mercer Co., ND	8919
2004	Kordecki, C.	M. Hufstetler	Burlington Northern Santa Fe Railway Company Abandonment in Cavalier Co., ND, Class I & Class II Cultural Resources Inventories	8920
2004	Kordecki, C.		Grand Forks Municipal Solid Waste Balefill Facility Turtle River Township, Grand Forks Co., ND Class III Cultural Resources Inventory	8938
2004	Kulevsky, A.		Highway 18 Intersection Improvements in Traill Co., NDDOT Project No. NH-8-018(040)124	8842
2004	Loflin, B.		Lynch Dam Project-Steele Co., ND	8979
2004	Morrison, J.		Walsh Co., Bridge No. 50-140-12.0 Replacement: A Class III Cultural Resource Inventory: Walsh Co., ND	9123

Year	First Author	Second Author	Title	Ms #
2004	Sondeland, D.		Bridge GRA.FO2 Replacement and Road Improvements: A Class III Cultural Resource Inventory, Walsh Co., ND	9010
2004	Stine, E.		CCEC Powerline: A Class III Cultural Resource Inventory in Traill Co., ND	8847
2004	Stine, E.		Northwood Golf Course, CTE Tree Planting: A Class III Cultural Resource Inventory in Grand Forks Co., ND	8936
2004	Toom, D.		Steele County Bridge Replacement Project BRO-46(016), Bridge No. 46-122-12.0 Cultural Resources Survey Steele Co, ND	8735
2004	Toom, D.		Two Bridges in Traill Co., ND Cultural Resources Surveys of Bridge Replacement Projects BRO-49(015): Bridge No. 49-105-04.0 and BRO-49(017): Bridge No. 49-122-06.1	8736
2004	Wermers, G.		North Central Electric Cooperative, Inc. Overhead Powerline Construction in Bottineau & Rolette Co., ND	9113
2005	Barger, M	J. Giliberti	A Cultural Resource Inventory of Structure Replacement, Leeds-Rolla 115-kV Transmission Line, Benson & Towner Co., ND	9056
2005	Beck, M.		Addendum to Bridge GRA.F02 Replacement & Road Improvements: A Class III Cultural Resource Inventory, Walsh Co., ND	9278
2005	Bleier, A.		2005 Forest Land Enhancement Program Sites in Billings, Emmons, Hettinger, & Steele Counties, ND: A Class III Cultural Resource Inventory	9479
2005	Bleier, A.		2005 State Wide Forest Land Enhancement Program Sites in Burleigh, Dunn, Emmons, Stark, Stutsman, & Walsh Counties, ND: A Class III Cultural Resource Inventory	9212
2005	Bleier, A.		2005 State Wide Tree Mitigation Sites in Burleigh, McLean, Pembina, Ransom, Stark, & Stutsman Counties, ND: A Class III Cultural Resource Inventory	9197
2005	Bleier, A.		Rumreich Gravel Pit Expansion: A Class III Cultural Resource Inventory in Walsh Co., ND	9448
2005	Bleier, A.		State Highway 38 from Buffalo to Page: A Class III Cultural Resource Inventory in Cass Co., ND	9393
2005	Bluemle, W.	L. Hafermehl	47th Avenue South: A Class III Cultural Resource Inventory in Grand Forks Co., ND	9260
2005	Bluemle, W.		America the Beautiful 2005 Community Challenge Grant Program Sites in Grand Forks & Mercer Counties, ND: A Class III Cultural Resource Inventory	9323
2005	Borchert, J.		NDDOT Project #SHN-5-008(026)093, Cavalier Snow Fence, Class III Cultural Resource Inventory, Pembina Co., ND	9394
2005	Burns, C.		The Christianson Survey, Traill Co.: A Class III Cultural Resource Inventory	9531
2005	Burns, C.		The Hanson Survey, Traill Co.: A Class III Cultural Resource Inventory	9527
2005	Burns, C.		The Olson Survey, Traill Co.: A Class III Cultural Resource Inventory	9526
2005	Burns, W.		Class III Cultural Resource Investigation for the Lynch Dam Restoration & Enhancement Project: Steele Co., ND NW¼, Section 8, T146N, R56W, Steele Co., ND	9171
2005	Christensen, J.		A Class III Intensive Level Pedestrian Cultural Resource Inventory of 35 United States Army Reserve Properties in CO, MT, ND, SD & UT for the 96 th Regional Readiness Command	9363
2005	Heiner, P.		Park River Multi-Use Trail: A Class III Cultural Resource Inventory, Walsh Co., ND	9535
2005	Kinney, W.		A Proposed Borrow Area in Walsh Co., ND for NDDOT Project Number DPI-0036(010)501. A Class III Cultural Resource Inventory Report	9361

Year	First Author	Second Author	Title	Ms #
2005	Kinney, W.		A Walsh County Borrow Pit for NDDOT Project Number AC-SC-5018(063). A Class III Cultural Resource Inventory Report	9360
2005	Kordecki, C.		Northern Plains Electric Cooperative 2004 Cultural Resources Inventory of Specific Projects in Benson, Foster, Kidder, Pierce, Rolette, Stutsman, Towner, & Wells Co., ND	9198
2005	Martens, S.		A Cultural Resources Survey of Riverside Park Residential Area Riverside Park Phase III Historic Architectural Survey Grand Forks, ND	9462
2005	Morrison, J.		Whitman Box Culvert: A Class III Cultural Resource Inventory, Nelson Co., ND	9566
2005	Salkin, P.		An Archaeological Survey of a Proposed Communications Tower Site in the Township of Northwoods, Grand Forks Co., ND	9311
2005	Salkin, P.		An Archaeological Survey of a Proposed Communications Tower Site Near the Town of Cooperstown, Griggs Co., ND	9313
2005	Stine, E.		ND03 Walhalla Alt 1 Cell Tower: A Class III Cultural Resource Inventory in Pembina Co., ND	9387
2006	Bleier, A.	L. Hafermehl	Highway 1 from Nekoma to Langdon: A Class III Cultural Resource Inventory in Cavalier Co., ND	9597
2006	Bleier, A.	E. Stine et al.	Keystone Pipeline Project: Class I, II, & III Cultural Resource Investigations in Eastern ND, Vols. 1 & 2	9969
2006	Burns, C.		The Peterson Survey, Traill Co., ND: A Class III Cultural Resource Inventory	9723
2006	Burns, W.		Beaver Creek Bridge Survey: A Class III Cultural Resource Inventory, Steele Co. ND	9838
2006	Burns, W.		The Bradshaw & Robertson Survey, Walsh Co.: A Class III Cultural Resource Inventory	9748
2006	Burns, W.		The Brunsdale Borrow Survey, Traill Co.: A Class III Cultural Resource Inventory	9644
2006	Burns, W.		The Corner Farms Survey, Walsh Co.: A Class III Cultural Resource Inventory	9749
2006	Burns, W.		The Johnson Pit Survey, Steele Co.: A Class III Cultural Resource Inventory	9645
2006	Burns, W.		The Strata Survey, Grand Forks Co.: A Class III Cultural Resource Inventory	9746
2006	Christensen, B.		Martinson Bridge Class III Inventory Report, Ransom Co., ND	9883
2006	Granger, S.	S. Kelly	Historical Report on Minnesota Bridge 5816/ND Bridge 49-130-15.0 Located in Shelly Township, Norman Co., MN & Caledonia Township, Traill Co., ND	9995
2006	Harty, J.		I-29 Improvements From Grand Forks to South of the Thompson Exit: A Class III Cultural Resource Inventory, Grand Forks Co., ND	9916
2006	Harty, J.		Improvements Along Highway 1: A Class III Cultural Resources Inventory in Cavalier Co., ND	9918
2006	Harty, J.		Improvements Along Highway 32: A Class III Cultural Resource Inventory in Nelson, Steele & Griggs Counties, ND	9840
2006	Harty, J.		Improvements Along Interstate 29: A Class III Cultural Resource Inventory in Pembina Co., ND	9775
2006	Harty, J.	J. Morrison et al.	Improvements to Highway 200 Through Hillsboro: A Class III Cultural Resources Inventory in Traill Co., ND	9904
2006	Hiemstra, D.		Community Transportation Enhancement Grant Program: A Class III Cultural Resource Inventory in Burleigh, Grand Forks, Ward & Williams Co., ND	9894

Year	First Author	Second Author	Title	Ms #
2006	Hiemstra, D.		Highway 18, Portland to Mayville: A Class III Cultural Resource Survey in Traill Co., ND	9771
2006	Hiemstra, D.		ND03 Warsaw Alt 1 (472): A Class III Cultural Resource Pedestrian Survey for a Proposed Verizon Wireless Lease Property in Walsh Co., ND	9682
2006	Holley, G.		Class III Cultural Resource Survey, City of Hope Lift Station, Steele Co., ND	9656
2006	Holley, G.	M. Michlovic	Class III Cultural Resources Survey, City of Mayville Sewage Disposal Pond, Traill Co., ND	9919
2006	Kinney, W.		Grand Forks, ND 40 th Avenue South Construction, Between S 20th Street & South Washington Street. A Class III Cultural Resource Inventory Report, Grand Forks Co., ND	9939
2006	Kinney, W.		Two Proposed Borrow Pits in Nelson Co., ND. A Class III Cultural Resource Inventory Report for NDDOT Project Number FNH-6-002(068)300	9721
2006	Klinner, D.		Bridge 10-125-14.0 Replacement: A Class III Cultural Resource Inventory, Cavalier Co., ND	9582
2006	Klinner, D.	J. Morrison	Enbridge Pipelines (ND) LLC, Phase 4 Pipeline Expansion Project Pumping Stations: A Class III Cultural Resource Inventory, Grand Forks, McHenry, Mountrail, & Ramsey Counties, ND	9855
2006	Klinner, D.		Highway 5 Improvements, NH-3-005(003)278 (PCN16345): A Class III Cultural Resource Inventory, Cavalier Co., ND	9596
2006	Klinner, D.		Walsh Co., Road 9 Improvement: A Class III Cultural Resource Inventory, Walsh Co., ND	9586
2006	Kordecki, C.	M. Jackson	Water Supply and System Improvements Project, Class I & Class III Cultural Resources Inventories for Walsh Rural Water District, Walsh Co., ND	9967
2006	Stine, E.		Meldahl Tree Plantings: A Class III Cultural Resource Inventory in Steele Co., ND	9673
2006	Wermers, G.		STATEOP-0456 Class III Inventory Report Grand Forks Co., ND	9862
2007	Bluemle, W.	A. Barth	Lake Upsilon Road: A Class III Cultural Resources Inventory in Rolette Co., ND	10131
2007	Bluemle, W.		Wakopa Trail Survey: A Class III Cultural Resources Inventory in Rolette Co., ND	10015
2007	Burns, W.		The Meldahl Survey, Steele Co.: A Class III Cultural Resource Inventory	10112
2007	Burns, W.		The Pleasont Valley Survey, Walsh Co.: A Class III Cultural Resource Inventory	10108
2007	Burns, W.		The Steinberger Survey, Traill Co.: A Class III Cultural Resource Inventory	10113
2007	Christensen, B.		Rendezvous Region Scenic Overlook Class III Inventory Report, Pembina Co. ND	10151
2007	Holley, G.		Class III Cultural Resource Survey, City of Mayville New Storm Sewer System Southeast of City, Traill Co., ND	10033
2007	Kinney, W.		A Cavalier County Borrow Pit for NDDOT Project Number HSP-6-066(014)094. A Class III Cultural Resource Inventory Report	10080
2007	Kinney, W.		A Proposed Grand Forks County Borrow Area for NDDOT Project Number HSP-6-002(064)322. A Class III Cultural Resource Inventory	9964
2007	Klinner, D.		Bridge 50-131-01.2 Replacement: A Class III Cultural Resource Inventory, Walsh & Pembina Counties, ND	10121

Year	First Author	Second Author	Title	Ms #
2007	Klinner, D.		I-29 CPR Maintenance From Near County Road 18 to Highway 54: A Class III Cultural Resource Inventory, Grand Forks & Walsh Counties, ND	10064
2007	Kordecki, C.	C. Jackson	Audubon Mitigation Tracts 2006 Cultural Resources Inventory in Cavalier & Grand Forks Counties, ND	10147
2007	Mulholland, S.	M. Farrell et al.	Phase I and II Archaeological & Geomorphic Investigations for MN Bridge 6632/ND Bridge 09-142-04.0 Replacement on CSAH 39, Norman Co., MN & County Road 26, Cass Co., ND	10011
2007	Stine, E.		Langdon-Hensel 115kV Transmission Line: A Class II & Class III Cultural Resources inventory in Pembina & Cavalier Counties, ND	10141

Among the earliest surveys was Lewis' work (1890) in the Red River drainage. This early work was updated by Haury (1990:33-36, 44-45) for Grand Forks County and Walsh County mound sites including 32GF123 and 32WA1.

Other early inventory work in the NRRSU was conducted under the auspices of the Smithsonian Institution River Basin Surveys (SIRBS) archeology program in the years following World War II. Wheeler (1948) reported on surveys undertaken for the Homme Reservoir along Park River as well as other work along the Pembina River and the Tongue River. Prominent mound sites were recorded during these spot-check surveys supplemented by inquiries with local informants. Hudak (1981b) resurveyed portions of the Homme Reservoir and reported no new sites. He relocated the Reunion site (32WA400), Homme Dam mound (32WA401), and the Homme Reservoir site (32WA403). All three sites are discussed in greater detail in Farmer et al. (1974) and Loendorf (1978b).

Gordon Hewes while at UND in 1946-1948 (cited in Cole 1968c) surveyed stretches of the Turtle River. Hewes recorded nine mound and camp sites which received among the first SITS numbers in Grand Forks County. Cole (1968c) revisited some of these sites during brief investigations of the Turtle drainage.

Kenneth Cole (UND) during the late 1960s undertook several seasons of fieldwork in the NRRSU. His reports cover investigations conducted along stretches of several major tributaries. Cole (1968a:1-2) recorded 34 sites along the Forest River between Fordville and Inkster during three weeks of survey. An updated survey of portions of the Forest drainage was conducted in 1985 (Larson et al. 1986).

During three days of survey, Cole (1968b) relocated several known mound and rock cairn sites along a stretch of the Goose River between Mayville and Northwood. Cole referred to this work along the Goose as rather "unproductive" compared with his earlier Forest River inventory.

University of North Dakota archeologists resumed cultural resource inventories along the Forest River (Loendorf and Good 1974a), Turtle River (Loendorf and Good 1974b), and the Park River (Loendorf and Loendorf 1975; Loendorf and Carmichael 1976) in the mid-1970s. The Forest River survey

identified four prehistoric sites (32GF326, 32GF327, 32GF328, 32GF329). Besant and Pelican Lake points were found at 32GF326. 32GF327 produced Middle/Late Archaic Oxbow or Parkdale Eared bifaces (cf. MacNeish 1958). Work along the south branch of the Turtle River reported by Loendorf and Good (1974b) included identification of 32GF324 which produced two obsidian flakes from a possible Middle Woodland context.

Loendorf and Loendorf (1975) surveyed a stretch of the Middle Park River in the area of SCS Dam #5. Two artifact scatters (32WA404, 32WA405) were recorded in tilled land on a river terrace. Corner-notched projectile points and other bifaces were also found. No pottery was encountered at either site.

Loendorf and Carmichael (1976) recorded two bone scatters and an isolated flake in an examination of some 37 mi of stream banks of the Middle Branch of the Park River and its tributaries. Low bottomland settings in these tributary drainages did not reveal much evidence for prehistoric land use. Elevated terraces were thought to contain cultural deposits.

Schneider (n.d.) investigated a site near Drayton during the mid-1970s. Late prehistoric (probably Late Woodland) remains were recovered during surface investigations.

Ames' (1975) work on the Pembelier project along the Pembina River in Pembina and Cavalier counties recorded 19 sites during a brief survey. All of the sites were located on the first terrace situated some 8-18 m (20-60 ft) above the floodplain.

One of the most extensive prehistoric archeological site inventories in the middle Red River valley was conducted in Norman County, Minnesota during 1981-1982 by Minnesota State University-Moorhead, as an outgrowth of the Minnesota Statewide Archaeological Survey (cf. MHS 1981). The survey area covered a 22 mi strip of floodplain river frontage, 0.125 to 0.25 mi in width, along the Red River, totaling about 3,200 acres. Michlovic (1982) reported 41 previously unrecorded prehistoric sites and find spots. Most of these sites and find spots occur along high levees of the river channel, suitable locations for human settlement (ibid.:56).

During the same period, Brown et al. (1982:38) reported 42 new prehistoric sites and 13 find spots on the Pembina River project in Pembina and Cavalier counties. Among the significant finds were a Clovis point (in a private collection) from 32PB25 and Late Archaic components identified at 32PB8 and 32CV204. An exotic KRF projectile point in the collection of Mr. Carl Kartes is illustrated. Many of the sites were found to be situated on colluvial fan landforms which would not have been susceptible to annual spring flooding.

Brown and Brown (1983) work on the Walhalla alcohol fuel plant survey resulted in the recording of two prehistoric sites (32PB39 and 32PB40). These sites are situated in river terrace and glacial beach ridge settings.

Biggs et al. (1984) discuss findings of the ring levee project along the Red River undertaken under the auspices of the US Army Corps of Engineers. In a stratified, random (15%) sample of some 314 farmsteads having ring levees, six previously unrecorded prehistoric sites and two prehistoric isolates were recorded. A site lead for Roy's Post (a fur trade post) was also reported.

During the early 1980s, UND archeologists conducted several small-scale surveys in Grand Forks and Walsh counties. Ketcherside (1981) discusses investigations in and around Turtle River State Park. Two lithic scatters (32GF22, 32GF23) were identified. Flanigan and Gregg (1982) reported no indications of surface visible artifacts along a stretch of the English Coulee drainage, although the potential for buried sites in this landscape setting was noted.

Riggle (1983) and Toom (1984) discuss highlights of small surveys along stretches of the Park River. The Skalicki site (32WA10) was recorded and tested during the course of these investigations (see Test Excavation Projects section).

During the summer of 1985, some 25 sections of land in the Forest River drainage in Grand Forks and Walsh counties were inventoried for cultural resources. Larson et al. (1986) reported 231 sites ranging from Paleo-Indian to the recent historic era. This one project generated most of the site records in the study unit database.

Sato and Associates (1986) reported no sites from four high priority locations within the NRRSU along the 110 mi long Jamestown-Grand Forks 115 kV powerline right-of-way.

Artz (1988c) located one prehistoric artifact scatter (32GF124) in a 364 acre tract for a Peacekeeper MX missile installation near the Grand Forks Air Force Base. Artz (1988b) also recorded several cultural material scatters during a survey of Icelandic State Park.

Inventory work associated with modifications to the Riverside Park Dam along the Red River in Grand Forks has been reported by Haury (1988a, 1988b). One buried artifact scatter was recorded along the banks of the Red River. Annual overbank flooding appears to have capped other late prehistoric cultural deposits with a meter or more of alluvium. Gregg and Picha (1989a) surveyed the Red River-English Coulee confluence and recorded the Omlid 1 site (32GF130) in a tilled field adjacent to the river. Stream confluence localities here as elsewhere appear to have high potential for containing remains of prehistoric settlements (cf. Anfinson 1990:159-160).

Artz and Kordecki (1988) and Kordecki (1988) recorded two sites (32GF121, 32GF123) during their survey of the Larimore Dam Access Road. The Smilden-Rostberg site (32GF123) was subsequently tested (Larson and Sanders 1988) and major excavations were later undertaken exposing an Early/Middle Archaic bison kill and processing site (Larson and Penny 1990; see below).

Schweigert (1989) surveyed some 22 mi of corridor for the Minto Water Supply Project and reported finding only one prehistoric isolate consisting of a single brown chalcedony flake. Similar negative results were obtained by Schweigert and Persinger (1989a) as part of the Agassiz Rural Water Project during which five historic sites were recorded. These findings support expectations that Native American site density will be low across broad expanses of the glacial lake plain away from tributary stream courses.

Schweigert and Persinger (1989b) discuss the Langdon Rural Water survey which covered some 219 miles of pipeline route and recorded 11 prehistoric sites. Some prominent sites such as 32CV64 and 32PB57 were recorded during this inventory. However, linear corridor surveys in the NRRSU which cross vast stretches of the Lake Agassiz Plain and adjacent areas of the glaciated plains are largely unproductive unless the transect encounters high potential localities such as beach ridges or stream confluences and crossings.

During Ritterbush's (1991b) search for fur trade posts in northeastern North Dakota, 16 archeological sites were identified. Ritterbush (1991a:44-49) discusses some of the problems associated with finding sites in Red River bottomland settings. As noted by Ritterbush, a geoarchaeological framework will aid in selecting likely site locations and help in determining the age of cultural deposits encountered in these settings.

The proposed construction of an approximately 1,845-mile long crude oil pipeline (TransCanada), originating in Canada and terminating in Illinois and Oklahoma, necessitated Class I, II, and III cultural resource inventories in eastern North Dakota (Bleier et al. 2006). Driven by a geomorphologist, the Class II inventory covered 100% of the original pipeline route. The Class III inventory was a 31% sample of the proposed pipeline route(s). The sample segments represented higher probability areas (ibid.:ii). The pedestrian survey was supplemented by shovel probes in areas of reduced ground surface visibility. Counties within the NRRSU include portions of Cavalier, Nelson, Pembina, Steele, and Walsh. Terrain along the proposed route varies from prominent riparian forests along stream valleys to flat farmland to gently rolling plains with intermittent wetlands. More specifically, the contemporary landscape comprises the Pembina Gorge, cultivated fields, pasture, and Conservation Reserve Program (CRP) fields. During the Class III inventory, one archeological site and two archeological isolated finds were recorded within the NRRSU (ibid.:Table 10).

Along the 2006 proposed TransCanada pipeline route, all of the archeological resources within the NRRSU consisted of lithics. Site 32PB202 is a small lithic scatter located in a flat cultivated field with a rise to the east and a man-made drainage to the north. Twenty artifacts were documented; except for one KRF flake, all were Swan River chert (ibid.:36). A Besant-type projectile point and a core also were found (ibid.). The two isolated finds, 32PBx176 and 32WAx211, were recorded in plowed fields and comprise one Swan River chert flake and one light brown chert flake, respectively (ibid.:52). In general, the

documented site settings and feature type are not unexpected (cf. Table 9.5 above).

Numerous archeological sites have been recorded in eastern North Dakota along sampled, cross-state linear project corridors, such as the TransCanada pipeline inventory. More surveys of this nature inevitably would result in the recordation of more archeological sites.

Since 1991, there have been nearly 280 inventories conducted within the NRRSU (Table 9.6). Of that, transportation projects account for approximately 62%, natural/water resources approximately 18%, communications approximately 5%, energy production and transmission approximately 3%, and the remainder consist of uncategorized projects. The overwhelming percentage of transportation projects and the very low percentage of energy projects in the NRRSU compared to study units in the western half of the state appear to reflect the emphasis on channels of commerce in the east and the surge in oil and gas production in the west.

Test Excavation Projects

Test excavations in the NRRSU were first reported by SIRBS and UND personnel in the years following World War II (Hoffman 1969). Table 9.7 is a listing of these projects. The earliest excavations along the Pembina River are reported by Wheeler (1948). Wheeler tested three rock cairn features which contained historic era burials of two dogs and a pig skeleton. It is also suspected (but not documented) that Gordon Hewes during his tenure at UND in the late 1940s tested several mounds which he had previously identified during inventories along the Turtle River.

Nearly a quarter of a century passed before the next phase of testing work was done in the NRRSU. Ames (1975) placed four 1 x 2 m tests at both the Woodtick site (32CV201) and the Carpenter site (32CV204). Few diagnostic artifacts were found in the tests; most appear to date to late prehistoric times. Cultural materials were restricted to the uppermost dark topsoil (A horizon) which was underlain by sediments derived from Walsh Formation clays.

Toom (1984) reported testing at the Skalicki site (32WA10) along the Park River for the NRCS. One 1-x-2-m test was excavated along the river cutbank to sample cultural deposits. A Late Woodland component was identified containing cord-roughened pottery, a small side-notched arrowpoint, and an antler tine flaker tool. Small quantities of chipped stone flaking debris (mostly Knife River flint and Swan River chert), fire-cracked rock, and bone also were recovered.

Porsche and Kuehn (1986) excavated a 1-x-1-m test unit at 32RO2 which was found to contain both prehistoric and later historic components. Little cultural material was recovered (a few flakes along with some bone fragments).

No diagnostic artifacts were encountered which could aid in dating the prehistoric deposit. A late prehistoric affiliation is probable.

Haury (1988b) sampled early 20th century historic deposits associated with dairy operations in Grand Forks as part of investigations undertaken at Riverside Park. A 2 x 2 m test was excavated revealing midden debris from a dairy barn.

Larson and Sanders (1989) reported test excavations at 32GF121 and the Smilden-Rostberg site (32GF123) recorded during work undertaken for the Larimore Dam access road investigated initially by Artz and Kordecki (1988). At 32GF121, three 1-x-1-m tests were dug to evaluate what turned out to be a sparse prehistoric deposit containing few artifacts.

Table 9.7: Test Excavation Projects in the Northern Red River Study Unit, 5-Sept-2007.

Year	First Author	Second Author	Title	Ms #
1948	Wheeler, R.		Appraisal of the Archeological Resources of Homme Reservoir, Cavalier County, & Tongue River Reservoir, Pembina County, North Dakota.	--
1969	Hoffman, J.		Outline of Human Prehistory in the Souris-Red-Rainy Basins	--
1975	Ames, K.		Archaeological Site Survey of the Pembilier Project Area	6
1978	Loendorf, L.		Statement of Negative Findings on the Test Excavations at the Reunion Site-32WA400	2261
1984	Toom, D.		Archeological Survey of Select Locations along the Lower Forest River & Testing of the Skalicki Site (32WA10), Walsh County, ND	3417
1986	Porsche, A.	D. Kuehn	A Report on Evaluative Testing at 32RO2, Turtle Mountain Indian Reservation, Rolette County, ND	4067
1988	Artz, J.		Subsurface Probing at 32GF123, A Prehistoric Archeological Site On The Turtle River Near Larimore Dam, Grand Forks County, ND	4538
1988	Haury, C.		Survey & Site Testing Along the Red River of the North for the Riverside Dam Project	4461
1989	Larson, T.	P. Sanders	Archaeological Investigations of Sites 32GF121 & 32GF123, Grand Forks Co., ND	4722
1993	Penny, D.	T. Larson	A Report on the Results of Test Excavations at 32GF155, Grand Forks Co., ND	6082
1994	Olson, B.	M. Tate	Highway 200 Project: Evaluative Testing at 32TR677, 32TR402, & 21NR29 Traill County, ND & Norman Co., Minnesota	6301
1995	Klinner, D.		Results of the Evaluative Testing of Sites 32PB63 & 32PB66: Two Fur Trade Era Sites in Pembina Co., ND	6867
1996	Ward, J.		Archaeological Investigations at 32WA62 (The Aafedt Site), Walsh County & 32PB95 (The Olafson Site), Pembina County, ND	7044
1997	Ward, J.		A Phase II Cultural Resources Evaluation of Historic Archeological Site 32GF116 City of Grand Forks, Grand Forks Co., ND	6871
1998	Florin, F.	J. Ward et al.	Grand Forks/East Grand Forks, Grand Forks Co., ND, General Reevaluation: Cultural Resources	7135
2002	Florin, F.		Phase I Survey of Revised English Coulee Pump Station & Phase II Testing of 32GF130 at Grand Forks, Grand Forks Co., ND	8128
2007	Mulholland, S.	M. Farrell	Phase I and II Archaeological & Geomorphic Investigations For Bridge 5816 Replacement on CSAH3, Norman Co., MN and County Road 13, Traill Co., ND	9996

Testing work at the Smilden-Rostberg site (32GF123) comprised three 1-x-1-m tests and a single larger 1 x 2 m unit (Larson and Sanders 1989). A bison bone bed was encountered in one unit. A preliminary date of 7195±115 RCYBP (GX 14514) was obtained on bone remains from the deposit. Major excavations were subsequently undertaken in 1990 (see below).

Test excavations, including 48 shovel tests and two 1-x-1-m test units, were conducted at 32GF155 (Penny and Larson 1993). The site is located south of the confluence of the Turtle and Red rivers. Cultural materials recovered during excavation were charcoal, fired clay (chinking), glass, metal, shell, and burned bone, and unburned large mammal bone with green breaks (*ibid.*:6). Investigators speculate (*ibid.*:8) that “The hand wrought nail, the fire clay, the pipe stem fragment and the scatter of bone are all consistent with the ages of the Turtle River [trading] posts (AD 1802 through 1815) as well as the archaeological evidence from other fur trade sites in North Dakota (e.g., Pembina).”

At 32TR677 and 32TR402, located where ND Highway 200 crosses the Red River, test excavations and geomorphological analysis were undertaken (Olson and Tate 1994). The Viker site (32TR677), a cultural material scatter, was initially recorded in 1989. At that time, the site’s surface expression included one quartzite biface, two gray chalcedony flakes, three KRF flakes, one plain ceramic body sherd, bone and freshwater mussel fragments, and fire-cracked rock (*ibid.*:7). During testing, 38 auger probes were placed at the Viker site; none contained prehistoric cultural material.

Site 32TR402, alternatively known as the Halstad site or the Kelso Ridge site, is located in a cultivated field on a low ridge between Grandin Lake to the west and the Red River to the east. Test excavations at the site consisted of 92 shallow auger probes, 16 deep auger probes, three deep cores, and five formal 1 x 2 m excavation units (*ibid.*:21-26). A buried pit feature (Feature 1), containing Northeastern Plains Village ware, flakes, clamshell fragments, burned and unburned bone, fire-cracked rock, a rounded cobble, and charcoal, was recorded (*ibid.*:36-39). The larger site assemblage includes dozens of native ceramic sherds and a small, triangular arrow point of possibly heat-treated reddish chert (*ibid.*). More diagnostic artifacts, previously collected from the site by a local resident, also were examined. The collection contained 22 projectile points, including a Pelican Lake-type point and generically described Woodland/Plains Village points (*ibid.*:46). A data recovery program was undertaken at 32TR402 in 1996 (see Major Excavation Projects section).

Sites 32PB63 and 32PB66 (the Walhalla State Historic Site), on the Pembina River, were tested in 1994 (Klinner 1995). Site 32PB63 is located within the Pembina City Park and is heavily disturbed. Geophysical testing has been recommended for that site (*ibid.*:iii). Artifacts recovered from 32PB66 include a Blackduck rim sherd, a body sherd, chipped stone flaking debris, and items consistent with those found at fur trade and military post sites (*ibid.*).

Test excavations were conducted at three prehistoric cultural material scatters, 32GF80, 32GF81, and 32GF82, along the Red River (Florin et al. 1998). No diagnostic artifacts were recovered from 32GF80. The artifact assemblages of 32GF81 and 32GF82 included Swan River chert flakes, bone and shell fragments, and native ceramics. Investigators identified the ceramic body sherds as “Late Plains Woodland Period, ‘hybrid Village-Woodland complexes,’ or the Northeastern Plains Village complex” (ibid.:45).

The Vettel site (32TR750) is a pre-contact site located near the Red River and County Highway 13. The surficial expression of the site included Swan River chert debitage, a dentate impressed body sherd, burned and unburned bone fragments, and a shell fragment (Mulholland and Farrell 2007:Table 2). Shovel tests, a formal excavation unit, backhoe trenches, and geomorphological investigations revealed additional information about the Vettel site (32TR750). Results of the testing program reveal a buried surface at one meter below surface “but there were no deeply buried archaeological sites associated with it in the project area” (ibid.:39).

NRHP and NDSHSR

The Gingras Trading Post (32PB101) is listed on both the National Register and the State Registry (Dill 1990:53). Three other prehistoric sites have either been nominated and/or declared eligible for listing on the NRHP.

Site 32CV64 is an extensive Late Woodland cultural material scatter located along the Park River. Site 32PB57 is a large late prehistoric artifact scatter overlooking the Pembina River. Both of these sites likely hold important information to the prehistory of northeastern North Dakota.

The Smilden-Rostberg site (32GF123) is a significant Early/Middle Archaic base camp or campsite and bison kill and processing site along the Turtle River (Larson and Penny 1990). The site has dense, dated intact deposits. Further investigations at sites such as 32GF123 will improve our understanding of Archaic prehistory in the NRRSU.

The current list of archeological sites in North Dakota listed in the National Register of Historic Places is available on the National Park Service website. The following internet links are useful (NPS 2008a, b):

General information and links to specific information: <http://www.nps.gov/nr/>
National Register Information System: <http://www.nr.nps.gov/>

Major Excavation Projects

Major excavations in the NRRSU have been on-going but sporadic since about 1880. Table 9.8 provides a listing of major projects undertaken and reported to date. The earliest known excavations were conducted in 1888 in Grand Forks. Montgomery (1906:650, cited in Haury 1988a:15) reportedly

excavated a mound (formerly 32GF12) in the vicinity of present-day Lincoln Park. At least two other mound groups are suspected to have been located in the area (Haury 1988a:15).

Table 9.8: Major Excavation Projects in the Northern Red River Study Unit, 5-Sept-2007.

Year	First Author	Second Author	Title	Ms #
1980	Franke, N.		Report of the Excavation of the Antoine Gringras Store, Antoine Gringras State Historic Site, Walhalla, Pembina Co., ND, 1972	2555
1990	Larson, T.	D. Penny	The Smilden-Rostberg Site: An Early Archaic Component in the Northeastern Plains	5498
1997	Larson, T.	R. Hilman et al.	A Report on Data Recovery Operations at the Halstad Site, 32TR402, Traill Co., ND	6872
2003	Blikre, L.	D. Benn	Phase III Cultural Resources Mitigation of Omlid 1 Site (32GF130) Grand Forks Co., ND, Volumes I & II	8466
2003	Madson, M.		Phase III Data Recovery Excavations at the Viets Hotel Site (32GF1286) & the Richardson Store/Hotel Mentone Site (32GF134)	8497
2004	Harvey, J.	R. Watson et al.	Archaeological Data Recovery at the Campbell House Site (32GF118), Grand Forks, ND	9006

The Fordville-Blasky Mounds (32WA1) were recorded and surveyed as containing 43 mounds and four linear embankments by Theodore Lewis in 1886 (Haury 1990; Wilford 1970:7). In 1935 Albert Jenks (then affiliated with the University of Minnesota) excavated two mounds at the site (*ibid.*). Hlady (1950:254) reported that the site was first visited by Henry Montgomery (1906) in 1883 who lists the count as “35 mounds and at least 4 artificial ridges.” Montgomery subsequently excavated at least three mounds in the group. During 1947, Gordon Hewes (UND) and then in 1949 Hlady (UND) returned to the site and excavated another mound (Mound C) which produced few artifacts (Hlady 1950).

The second group of early mound excavations undertaken in the NRRSU was conducted at the Arvilla Mounds (32GF1) (Jenks 1932; Johnson 1973:6-14). During 1933 and 1935, Jenks (UM) excavated three mounds of the group. The remains recovered by Jenks form the basis for the definition of the Arvilla complex (Johnson 1973; Syms 1982b).

Three decades passed before Kenneth Cole (UND) undertook further excavations at two mound sites in Grand Forks County. At the Colony Mound (32GF305), Cole (1967b) excavated a 5 x 20 ft trench which revealed two superimposed burial pits. One of these features contained the remains of an infant interred with *Natica* beads. Cole (n.d.) also reported on burials recovered from 32GF308 and several other sites including 32NE301 which produced a beaver incisor, shell pendants, and *Busycon columella* artifacts.

Franke (1980) outlines excavations at Gingras Store (32PB101). The purpose of this work was to determine architectural information about the Euro-American fur trade era structure.

Williams (1982) discusses the skeletal biology of a Woodland mortuary excavated by SHSND personnel in 1980 at the Inskter site (32GF19). Few artifacts were recovered with the interment of at least 28 individuals. Other mound excavations also occurred on tributaries of the Red River on the Minnesota side such as the Warner mound (21PL5) along the Sand Hill River (Thompson 1985; Wiland n.d.).

Major excavations have been carried out at the Smilden-Rostberg site (32GF123). Archeologists affiliated with Larson-Tibesar Associates excavated a ca. 56 m² block containing a bison bone bed and several artifact concentrations which date to 3850 BC (Larson and Penny 1990). Recovered materials included stone and bone tools, chipped stone flaking debris, and bison, dog, and human remains.

In 1996, a data recovery program was conducted at the Halstad site (32TR402) (Larson et al. 1997). Based on the extensive excavations, investigators were able to address questions regarding prehistoric cultural chronology, climate, subsistence, activities, and exchange. First, radiocarbon dating by Larson et al. (ibid.:40) corroborates the radiocarbon date reported earlier by Olson and Tate (1994); calibrated ages of the samples are AD 1290 and AD 1282, respectively. Diagnostic artifacts at the site include Sandy Lake, Lisbon Flared Rim, and Buchanan Flared Rim wares and small corner-notched arrow points (Larson et al. 1997:44). No cultural materials were recorded below the A-horizon (ibid.:40). Second, it appears that the prehistoric climate was similar to the present. Third, from the minimal amount of floral and faunal remains recovered, investigators speculate, "Perhaps the most intriguing potential indicator of plant foods at the site are two possible cucurbit phytoliths from Feature 1...this appears to be the first instance of potential cucurbits within the Northeastern Plains Village occupations of the Red River Valley" (ibid.:43). Fourth, the chipped stone flaking debris indicates that tool maintenance was an activity at the site. In contrast to previous assumptions (cf. Olson and Tate 1994), KRF accounted for 45% of the 1996 lithic assemblage (Larson et al. 1997:44). Finally, no exotic items were found during data recovery, suggesting the site may be on the periphery of the trade network further to the southwest (ibid.:46).

Excavations were undertaken at 32GF130 in 2001 (Florin 2002). The multi-component (prehistoric and historic) site is located north of the city of Grand Forks, between the English Coulee and the Red River. The prehistoric components date to the Late Plains Woodland and Northeastern Plains Village periods, as evinced by the recovered ceramics (ibid.:72). The prehistoric deposits contain a variety of cultural materials. Notably, the recovered lithic artifacts indicate an even reliance on locally available Swan River chert and KRF (ibid.). Investigators state, "Artifact types indicate the site functioned as a habitation and included activities related to animal processing, lithic reduction and stone tool manufacture/maintenance, cooking, and possibly pottery vessel manufacturing" (ibid.).

Mitigation of 32GF130 occurred during the summer of 2002 (Blikre and Benn 2003). The project reaffirmed that the prehistoric component comprises episodes of Late Plains Woodland period occupations. Chronometric markers for this include Sandy Lake ware ceramics and five archeological house features (ibid.:122). “Radiocarbon dates around AD 1300 have been assayed for the Sandy Lake occupation on the Lower Terrace, adding to the short list of dated sites and comparing favorably to the Femco site in Wilkin County, Minnesota” (ibid.). Investigators propose that the function of the site was a repeatedly used, short-term occupation inhabited by family-sized bands hunting bison (ibid.:120).

Other Work

The listing of other works presented in Table 9.9 provides background information covering the NRRSU as well as adjacent areas of northwestern Minnesota and southern Manitoba. Prehistoric and protohistoric cultural dynamics responded to developments in adjacent regions of the prairie-woodland ecotone. This listing also includes diverse topics such as impacts of prescribed burning on biological and cultural resources (Sayler et al. 1989).

In 1993, Toom and Kordecki (1994) assessed the condition of 28 flood-damaged sites across the state. One archeological site within the NRRSU was examined. The Drayton site (32PB1) was originally surveyed in 1975. At that time, the site was documented as a large surface scatter covering a plowed field at a meander in the Red River. During their 1993 inventory, Toom and Kordecki reported that the eastern portion of the site was inundated by water (ibid.:14). They observed few artifacts and cautioned of continual disturbance by flooding, farming activities, and possibly looting (ibid.).

A 2006 *Plains Anthropologist* volume (Nicholson et al.), titled “Changing Opportunities and Challenges: Human-Environmental Interaction in the Canadian Prairies Ecozone,” is devoted to an inter-disciplinary project north of the Northern Red River Study Unit. Integrated research in archeology, ethnohistory, geoarcheology, geomatics, landscape analysis, oral traditions, paleoenvironmental studies, soils science, and zooarcheology is the focus of the Study of Cultural Adaptations in the Canadian Prairie Ecozone (SCAPE) funded by the Social Sciences and Humanities Research Center in Canada (ibid.:231). The six goals of the project, as stated by Nicholson et al. (2006:232), are:

- 1) to reconstruct the “natural” and “cultural” landscapes of selected locales at ca. 9000 BP; 6,000 BP; 3,000 BP; 1,500 BP; and 500 BP;
- 2) to recover data on landscape use by human groups in dune field, riverine and upland environments through time and to compare our results with published works on other ecologically diverse localities in the Canadian Prairie Ecozone;

- 3) to understand the perceptions and cultural responses of groups, at particular times and places, to ecologically diverse localities within the Canadian Prairie Ecozone;
- 4) to characterize areas of high biodiversity within the larger Canadian Prairie Ecozone biome through collection of geoarchaeological data;
- 5) to identify ways in which human groups intentionally modified their environment through practices such as fire ecology and selective hunting;
- 6) to model human adaptive strategies to areas of high biodiversity in the context of the Canadian Prairies Ecozone using Geographical Information Systems technology.

The program is enhanced by the use of current technology and information from native oral traditions. Two subsequent volumes are planned that will expound on researchers' theories and models, and cultural patterns in an environmental context of the region.

Table 9.9: Other Work in the Northern Red River Study Unit, 5-Sept-2007.

Year	First Author	Second Author	Title	Ms #
1965	Anonymous		Historic Sites Under the Authority of the State Historical Society of North Dakota As Established by The 39 th Legislative Assembly	2011
1970	Shay, T.		Warren Mounds (32PB2)	7147
1972	Woolworth, N.		Part I Antoine B. Gingras Site Walhalla, Pembina Co., ND	5464
1979	Schweigert, K.		Walsh County Survey	682
1980	Good, K.	J. Dahlberg et al.	A Cultural Resource Assessment of the Pembilier Lake and Dam Flood Control Project (A Literature and Records Search), Cavalier Co., ND	2479
1981	Jonason, R.		Hope Historic Structures Survey, Steele Co., ND	5944
1981	Wolff, J.		Portland Historic Structures Survey, Traill Co., ND	5942
1982	Snortland, J.		Inventory & Archeological Assessment of the State Historical Society of North Dakota's State Historic Sites	1814
1985	Vyzralek, F.		Report of an Architectural & Photographic Survey of Churches in Cavalier, Dickey, Cass, Traill, Grand Forks, Nelson, Ramsey, Walsh, & Pembina, Counties in Nine Eastern North Dakota Counties.	5945
1989	Ahler, S.	P. Picha et al.	Impacts of Prescribed Burning on Archeological & Biological Resources of the Knife River Indian Villages NHS, Mercer Co., ND	5090
1989	SHSND		Gingras State Historic Site, Pembina Co., ND Master Planning-Concerns & Proposals	4768
1990	Gregg, M.	P. Picha	Des Lacs-Souris Drainage Basin Erosion Control Study Area Cultural Resources Review Part 1: Prehistoric Cultural Resources Overview & Part 2: Prehistoric & Historic Archeological Sites on Primary Sample Units & Potential Impacts	5036
1990	Haury, C.		In the Footsteps of T.H. Lewis: Retracing of the Northwestern Archaeological Survey in Oliver, Benson, Grand Forks, Pembina, Ransom, Richland, LaMoure, Morton, Stutsman, & Barnes Counties, ND	5322
1990	Larson, T.	D. Penny	The Smilden-Rostberg Site: An Early Archaic Component in the Northeastern Plains, Grand Forks Co., ND	5498

Year	First Author	Second Author	Title	Ms #
1990	Ross, N.		An Historical Evaluation of a Through-Truss Bridge Grand Forks County, North Dakota	5165
1990	Williams, J.		Human Skeletal Remains Recovered From Walsh Co., ND 32WA55	5776
1991	Alm, M..		Environmental Assessment for Class II Action for Water Supply & Delivery System Improvements, Pembina Co., ND	5562
1991	Driscoll, P.	M. Gregg et al.	Wildlife Development Area Surveys in Nelson, Ramsey, Benson, Towner, McLean, Burleigh, Cavalier, Sheridan, Stutsman, & Wells Counties, ND	5303
1991	Roberts, N.		Park River Downtown Housing Project, Walsh Co., ND	5504
1993	Vyzralek, F.		Red River Oxcart Trails in Pembina & Walsh Counties, ND	6247
1994	Breakey, K.	C. Dobbs et al.	Evaluation of the Archaeological Sites on the Lakehead Pipe Line Company Corridor between Neche, North Dakota & Clearbrook, MN, 32PB153 & the Angle Road Tongue River, Pembina Co., ND	6256
1994	Breakey, K.	C. Dobbs et al.	Evaluation of the Archaeological Sites on the Lakehead Pipe Line Company Corridor between Neche, North Dakota and Clearbrook, MN, 32PB154, 32PB155, & 32PB161 Red River, Pembina Co., ND	6257
1994	Breakey, K.	C. Dobbs et al.	Phase I Archaeological Investigations of Selected Areas of the Lakehead Pipe Line Company Corridor between Neche, Pembina Co., ND & Clearbrook, MN	6228
1994	Stine, E.	A. Kulevsky	Four Cities in North Dakota: A Class I Cultural Resource Survey Records & Files Search of Fargo, Grand Forks, Mandan, & Minot, ND	6240
1994	Toom, D.	C. Kordecki	Flood Damage Assessment Survey of Twenty-Eight Archeological Sites Along the Cannonball, Heart, James, Maple, Red and Sheyenne Rivers, ND	6222
1995	Fedje, N.		A Brief History of Citizens State Bank of Neche, Pembina Co., ND	6688
1995	Kordecki, C.		Homme Reservoir Phase I Cultural Resources Investigation of Two Possible Site Areas in Walsh County, North Dakota, 1994 Field Season	6377
1996	Frison, G.	R. Mainfort	Archeological & Bioarcheological Resources of the Northern Plains	--
1996	Good, K.		Cavalier Bridge (Tongue River Bridge) (NDDOT Bridge Number, 5-313.750) Highway #5, Within the City Limits of Cavalier, Pembina Co., ND	6682
1996	Ness, M.		Results of a Historic Architecture Study from Main Avenue to 13 th Avenue South and University Drive to Mid-block of 14 th Street South, Fargo, Cass Co., ND	6718
1997	Benchley, E.	B. Nansel et al.	Archeology & Bioarcheology of the Northern Woodlands	--
1997	Williams, J.		Summary Report: Analysis of Unknown Osteological Elements Examined at Site 32WA55, Walsh Co., ND	7041
1998	Foth & Van Dyke		Archaeological Monitoring at the Pembina River Crossing, Pembina Co., ND	7303
1998	Michlovic, M.	F. Swenson	Northeastern Plains Village Pottery	--
2000	Fassler, T.	T. Madigan	Phase I & II Cultural Resource Investigations at the City of Grand Forks, Grand Forks Co., ND	7858
2000	Vyzralek, F.		FEMA Grafton Buyout, May-June, 2000-Overview, Walsh Co., ND	7992
2000	Vyzralek, F.		Turtle River State Park Arvilla, Grand Forks Co., ND Report on the Eligibility of Structures Erected During the Initial Development of the Park, 1934-1941	7994
2001	Bischoff, W.	L. Hafermehl	Evaluation of the Lincoln Park Golf Course (32GF3241), Two City Buildings (32GF3147), & a Fireplace/Chimney/Patio Structure (32GF2087) in the City of Grand Forks, Grand Forks Co., ND	8332
2001	Ekstrom, R.		FEMA Drayton, ND Historic House Study Survey of Three Properties in Drayton, Pembina Co.	7991
2004	AE2S		Report on Mitigation of R.S. Blome Granitoid Pavement Performed in Conjunction with the Transmission Pipelines & Residuals Force Main Project-Phase 2 for the City of Grand Forks, Grand Forks Co., ND	8879

Year	First Author	Second Author	Title	Ms #
2004	Gales, E.		Historic Documentation St. Michael's Hospital & Nurses' Residence 813 Lewis Boulevard (32GF14) Grand Forks, Grand Forks Co., ND	8881
2004	St Paul District, COE		Historic Documentation Granitoid Pavement (32GF165) Lewis Boulevard South of Hwy 2 Grand Forks, Grand Forks Co., ND	8880
2005	Hufstetler, M.	J. Goff	Historic Bridges in North Dakota 2004 Revision	10128
2006	Burns, W.		Steele County Bridge Number 46-122-07.0 Photographic & Narrative Documentation of the Structure & an Examination of its Construction, Steele Co., ND	9945
2006	Granger, S.	S. Kelly	Historical Report on Minnesota Bridge 6632/North Dakota Bridge 90-142-04.0 Located in Lee Township, Norman Co., MN & Noble Township, Cass Co., ND	9777
2006	Nicholson, B.	D. Wiseman et al.	Changing Opportunities & Challenges: Human-Environmental Interaction in the Canadian Prairie Ecozone	--
2006	Widga, C.		Bison, Bogs, and Big Bluestem: The Subsistence Ecology of Middle Holocene Hunter-Gatherers in the Eastern Great Plains	9968
2008	Michlovic, M.	D. Toom	Papers in Northeastern Plains Prehistory	--

Paleo-Indian Period

The Paleo-Indian tradition dominated during a 4,000-year period between 9500 and 5500 BC. Following the recession of Wisconsinian ice and the filling of glacial Lake Agassiz, those portions of the NRRSU west of the Pembina Escarpment would have been open for initial settlement. The hunting and gathering lifeways of these early groups adapted to Early Holocene flora, fauna, and climatic regimes. At the close of the Paleo-Indian period with the declining water levels and the complete drainage of Lake Agassiz, all of the Study Unit was habitable.

Paleo-Environmental Modeling

The late glacial chronology for northeastern North Dakota has been set forth by Clayton and Moran (1982) with additional details provided by Hallberg and Kemmis (1986). Glacial ice advanced and retreated several times in the NRRSU during late Pleistocene times. The initial filling of glacial Lake Agassiz with meltwater had begun by 11,700 BP. (Fenton et al. 1983). Lake levels in the southern portion of the basin fluctuated during the next several millennia with high water levels marked by prominent beach strandlines. However, as Fenton et al. (1983:57-58) indicate, the actual lacustrine history of the lake is more complex than originally thought. Additional geoarcheological investigations of Lake Agassiz should take place with emphasis directed toward the mapping and correlation of beach deposits. Collection of datable organic remains from these contexts is needed to put existing chronologies on more sound footing (cf. Ashworth and Cvancara 1983: 138).

Paleoecological study of the Agassiz basin are summarized by Shay (1967) and Ashworth and Cvancara (1983). Following the retreat of glacial ice, a spruce forest mosaic with openings colonized the tundra-like environs of the NRRSU. Climatic reconstruction of the basin based on pollen profiles and plant

macrofossil data suggest that prairie replaced spruce forest by 8500 BP (ibid). To the west along the Prairie Coteau, mixed deciduous forest with prairie openings replaced the spruce forests of the early Holocene. With increasing aridity in the next millennium, a prairie grassland habitat came to dominate much of the NRRSU by 8000 BP.

Cultural Chronology

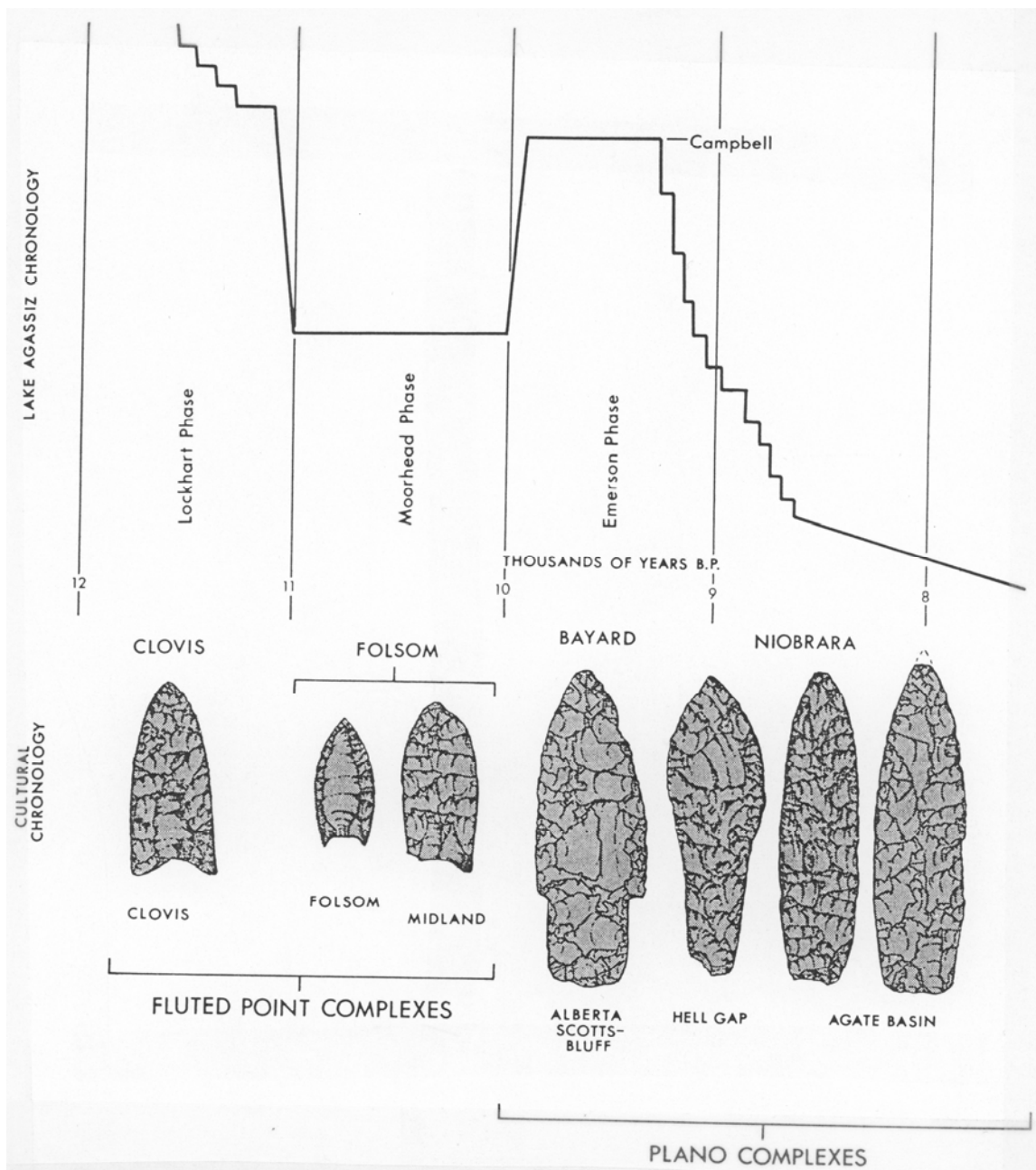
The Paleo-Indian cultural chronology identifies Clovis, Folsom, and Plano complexes as occurring or anticipated in the NRRSU. Figure 9.2 depicts these complexes juxtaposed with lake levels in the glacial Lake Agassiz basin. A Clovis point is reported from an upland setting at 32PB25 along the Pembina River. Folsom components have not as yet been identified. Plano complex (including Caribou Lake) artifacts are better known from several sites based on recent investigations. These finds have become known since Schneider's (1982) survey. An updated survey for Paleo-Indian artifacts and associated cultural deposits should be undertaken in the NRRSU. Geomorphological information on cultural settings producing artifacts should be gathered. An attendant eye for poorly known complexes such as Goshen as well as later Plano materials including a prepared blade core technology is necessary (cf. Frison 1988b).

Settlement Behavior

Buchner and Pettipas (1990:53) report that the six known Clovis specimens from southern Manitoba are all from locations west and above the Manitoba Escarpment (marking the western edge of glacial Lake Agassiz). Seven Folsom locations are known to date from the province (ibid.). However, later Plano specimens are commonplace with find spots totaling near 1000 localities in Manitoba. Occurrences of early Paleo remains in northern Minnesota are spotty (cf. Munson 1990). Plano age (Reservoir Lakes phase) artifacts are reported from a great many more locations (cf. Johnson 1988:9; Steinbring 1974:66). The few known site locations in the NRRSU are situated on landforms adjacent to paleochannels or early Holocene age terraces.

In order to begin to predict possible locations of Paleo-Indian deposits, landform modeling and assessments of land use patterns must be developed and tested. How different were Paleo-Indian settlement practices in the early Holocene boreal environs compared to those of mid- and late Holocene Archaic peoples in the prairie-forest ecotone?

Figure 9.2: Paleo-Indian cultural sequence in Manitoba, Canada, and juxtaposition with glacial Lake Agassiz chronology (from Buchner and Pettipas 1990:52).



Native Subsistence Practices

Bison were the primary food resource reported from the late Paleo Caribou Lake component at the Sinnock site located along the Winnipeg River in southern Manitoba (cf. Bobrowsky et al. 1990; Buchner 1981). However, Paleo-Indian hunter-gatherers frequenting the NRRSU faced a changing biome which included diverse floral and faunal communities, certain elements of which were doomed to extinction (cf. Guthrie 1984).

Early Clovis and Folsom groups likely depended on megafauna such as mammoth, mastodon, camelids, and bison. Plano peoples focused more on herds of modern bison (Frison 1988a, 1991). Paleo-Indian deposits when encountered must be sampled for subsistence remains either directly (i.e., fine mesh screening and flotation) or by other more sophisticated means (i.e., blood residues on stone tools). Hard data are needed to counter the current hiatus regarding early subsistence practices.

Technologies

As with subsistence, very little is known regarding Paleo-Indian technologies other than that available for stone tools, which in itself is relatively meager. Peterson (1973) reported on an early lithic workshop site in Roseau County, Minnesota exposed in Lake Agassiz beach gravels. What other materials serve to typify Plano technologies other than stone? Costin (1991) has outlined a multi-dimensional scheme useful for characterizing the organization of production. Paleo-Indian stone, bone, and woodworking technologies could be fruitfully investigated by adopting this perspective.

Glacial lake beach settings which occur throughout the NRRSU offer promise for good preservation of organic remains including bone and shell (cf. Gregg and Aird 1991). Without more firsthand information at our discretion, further discussion of technological issues borders on pure speculation.

Artifact Styles

The reported Paleo-Indian artifacts, restricted to tips for projectiles made of stone, conform to regionally identified norms of lithic craftsmanship. Brown et al. (1982) report a KRF Clovis point from 32PB25 in the possession of a local collector. A Caribou Lake point made from a fine-grained quartzite was collected from 32GF38 (Larson et al. 1986:Figure 7a). Other Scottsbluff specimens reportedly occur in private collections from at least two Forest River localities (Larson et al. 1986:67).

Does a Paleo-Indian-age prepared blade core technology occur at sites within the NRRSU as has been identified at the Pelland site in northern Minnesota and the Moe site (32MN101) in western North Dakota?

Regional Interaction

Aspects of Paleo-Indian adaptive behavior along with accompanying technological practices and tool-kits can be explored most directly through the study of lithic procurement strategies (cf. Tankersley et al. 1990). However, the identification and reporting of stone materials is a necessary first step (see Bakken 1985). As Frison (1988a:94) implies regarding the presence of exotic stones in the Folsom component at the Agate Basin site, "The societal mechanisms that brought about and sustained this kind of distribution are undetermined, but trade across territorial boundaries seems more likely to have been the case than direct procurement expeditions." Does this statement hold true for the NRRSU and adjacent northern Minnesota?

Historic Preservation Goals, Priorities, and Strategies

An updated survey of Paleo-Indian sites in the NRRSU should be conducted in concert with recording information on artifacts housed in private collections (cf. Munson 1990). A multi-faceted research program aimed at exploring relationships between environmental and cultural change during the Paleo-Indian period in northeastern North Dakota merits development and implementation. Bettinger (1991) provides important background information on hunter-gatherers which can be incorporated into such a study.

Plains Archaic Period

The Plains Archaic tradition dominated in the NRRSU between 5500 and 400 BC. Early, Middle, and Late subperiods are recognized based largely on artifact stylistics and an increasing number of associated chronometric dates. Essentially modern resources were exploited by Archaic hunter-gatherers during mid- and late Holocene times.

Paleo-Environmental Modeling

Current paleoclimatic models for the Northeastern Plains hold that three major climatic episodes (Atlantic, Sub-Boreal, and Sub-Atlantic) characterized the regional environs during the Archaic. Droughty, arid (xeric) conditions typified much of the early and middle periods. However, periodically mesic interludes of unknown duration likely prevailed during certain times which would have promoted landform stability and enabled increased buildup of the regional biomass. It is suspected that much of the tributary valley infilling occurred during xeric periods during the Atlantic. Middle and Late Archaic remains occur in surface and near-surface contexts on alluvial/colluvial fan landforms feeding the mainstem valley lending creditability to this proposition. It is proposed that Early Archaic deposits are lacking from surface and near surface contexts here because these landforms were being rapidly created when xeric conditions prevailed during the Early Archaic period. If Early Archaic sites

are to be found here, it is proposed they will be deeply buried within the fans as they are at sites like Koster in the Illinois River Valley.

By the late Holocene, conditions appear to have improved fostering increased human settlement in the NRRSU. The greater number of Late Archaic sites compared with earlier ones in the NDCRS data files tends to support this claim.

Environmental reconstruction of Holocene conditions in differing physiographic settings containing stratified cultural deposits in the NRRSU should be undertaken. These include: 1) valley bottomland, 2) alluvial/colluvial fans, and 3) glaciated plains, specifically pond settings in the Turtle Mountains locality.

Cultural Chronology

The Archaic chronology in the NRRSU follows that outlined for the rest of North Dakota except for the addition of the Old Copper complex during the Late Archaic (see SHSND 1990:B.22-B.28). Mason (1981:181-195) and Stoltman (1986:217-226) provide useful introductions along with good illustrations of Old Copper materials. The division of Early (pre-Oxbow and Oxbow) and Middle (post-Oxbow) Archaic periods on purely temporal grounds still presents somewhat of a problem due to the paucity of securely dated contexts in the region.

Early Archaic remains are rare in the NRRSU. Larson et al. (1986:Figure 7b) illustrate a probable early side-notched dart point collected from 32WA1 in the Forest River drainage. Shay's (1971) report covering the Itasca Bison Kill site remains a key source concerning the Early Archaic. Dobbs and Christianson (1991) provide an update on work at another Early Archaic component at the Peterson site (21YM47) to the southeast. Recent investigations at the Smilden-Rostberg site (32GF123) revealed a pre-Oxbow component (Larson and Penny 1990). Bison remains in association with side-notched points similar to Itasca forms were dated to 5660 ± 170 BP (GX 15665) and 5860 ± 210 BP (GX 15666) (ibid). An earlier reported date of 7195 ± 115 BP (GX 14514) for the deposit has been rejected as too early based on results of subsequent analyses.

Oxbow components are better represented in the Northern Red River Basin (cf. Wettlaufer 1960 a,b,c). Larson et al. (1986) reported Oxbow materials from 32GF57. Others occur in the Forest and Pembina drainages (Brown et al. 1982; Loendorf and Good 1974a). Still other unreported Oxbow campsites are suspected to occur in Grand Forks County based on informant interviews and artifacts in private collections (Kermit Bakke, personal communication to Michael Gregg, April 1991; "Artifacts Give a Glimpse of Region's History, *Grand Forks Herald*, April 4, 1991).

Middle Archaic Duncan and Hanna components are also known from several reported and unreported locations throughout the NRRSU (cf. Brown et al. 1982; Michlovic 1986). It is postulated that increased site frequencies are correlated with and reflect increased regional population densities.

Late Archaic Pelican Lake remains are suspected to be quite common, although this suggestion is not currently borne out by existing NDCRS site data (see Table 9.4). Corner-notched dart points are taken to be Late Archaic temporal/cultural indicators. Some of the sites classed as unknown undoubtedly contain Pelican Lake components. Likewise, Old Copper remains have been reported from locations within and west of the NRRSU (cf. Johnson 1964; Spiss 1968). Unreported Old Copper remains occur in contexts along beachlines of glacial Lake Agassiz as well as other locations (Kermit Bakke, personal communication to Michael Gregg, April 1991; John Beach, personal communication to Michael Gregg, July 1991). An inventory and catalog of Old Copper artifacts from eastern North Dakota locations should be prepared. Knowledgeable local individuals should be consulted and asked to contribute in this process.

Settlement Behavior

Archaic base camps from all subperiods are suspected to be located along the Red and its major tributaries in areas providing ready access to dependable stores of food, water, fuel, and shelter (cf. Larson and Penny 1990; Michlovic 1986). Temporary camps can be expected in many of these same locations as well as along more ephemeral drainageways throughout the NRRSU. Glacial beach ridge settings are also thought to contain remains of Archaic settlements (cf. Johnson 1964). Previously unreported Oxbow encampments situated along minor drainages have recently come to our attention. During mesic climatic episodes, the regional biomass would have increased and thus have been capable of supporting greater numbers of both herd animals and people.

Are there quantifiable differences in settlement behavior among the various Archaic groups who frequented the NRRSU throughout the mid- and late Holocene?

Native Subsistence Practices

Recent excavations at the Smilden-Rostberg site (32GF123) provide the largest sample of Archaic subsistence remains recovered in the NRRSU. Bison bones along with those of a canid were recovered from a context dated to ca. 3850 BC. (Larson and Penny 1990). Michlovic's (1986) investigations of a Hanna component at the Canning site (21NR9) dating some 2,000 years later also show a continued dependence on bison as a key resource. The role of plant foods in regional Archaic diets remains unsettled.

Did Archaic groups modify their subsistence strategies during mesic as well as during less productive xeric environmental conditions as the result of social factors? How important was food storage and food sharing to these people during times of both feast and famine?

Technologies

Block excavations at the Smilden-Rostberg site (32GF123) produced a sample of some 59 stone tools and 788 pieces of flaking debris (Larson and Penny 1990). Side-notched dart points along with other cutting and scraping tools predominated. Only one bone tool was recovered. Much the same situation was reported at Canning by Michlovic (1986) where, except for worked beaver incisors, stone artifacts were most prevalent. This picture of low overall technological diversity is also mirrored at Itasca (cf. Shay 1971). Next to nothing is known concerning Archaic housing and architecture from any of these sites which have been subjected to the greatest amounts of excavation. Did conical skin or bark covered structures serve as forerunners to the tipi for Archaic populations in the NRRSU?

Copper ore was used to fashion a variety of Late Archaic tool forms from various sites in the Study Unit. How does technological organization differ among Archaic populations in the primary copper source areas and the NRRSU (cf. M. Nelson 1991)? Similarly, the role of other nonlithic resources needs to be assessed. How important were bone, antler, and shell materials to Archaic hunter-gatherers in the upper Red River valley?

Artifact Styles

Early Archaic dart point styles at sites such as Smilden-Rostberg and 32WA1 appear to be akin to those identified by Shay (1971) at Itasca. Middle and Late Archaic complexes (Duncan, Hanna, and Pelican Lake) are largely recognized by artifact cross dating in the basin. The range of variability in Old Copper artifacts from the basin needs to be assessed. What other attributes can be used to identify Archaic components in lithic aggregates presently classed as unknown?

Regional Interaction

The Smilden-Rostberg and Canning chipped stone assemblages are dominated by local materials (Swan River chert, chert, and quartzite) along with liberal quantities of Knife River flint (Larson and Penny 1990; Michlovic 1986). Use of exotic stone materials by Archaic peoples appears to provide important clues regarding spheres of interaction and trade in the Red River valley and surrounding environs. What are the specific source areas for the Old Copper artifacts occurring in the NRRSU? Do source areas for associated stone tool materials reflect similar distributions (cf. Bakken 1985; Rapp et al. 1990)?

Historic Preservation Goals, Priorities, and Strategies

Interviews with knowledgeable local informants must be pursued more vigorously before information on many of these poorly known Archaic cultures (e.g., Oxbow, Old Copper) in the basin is lost.

Plains Woodland Period

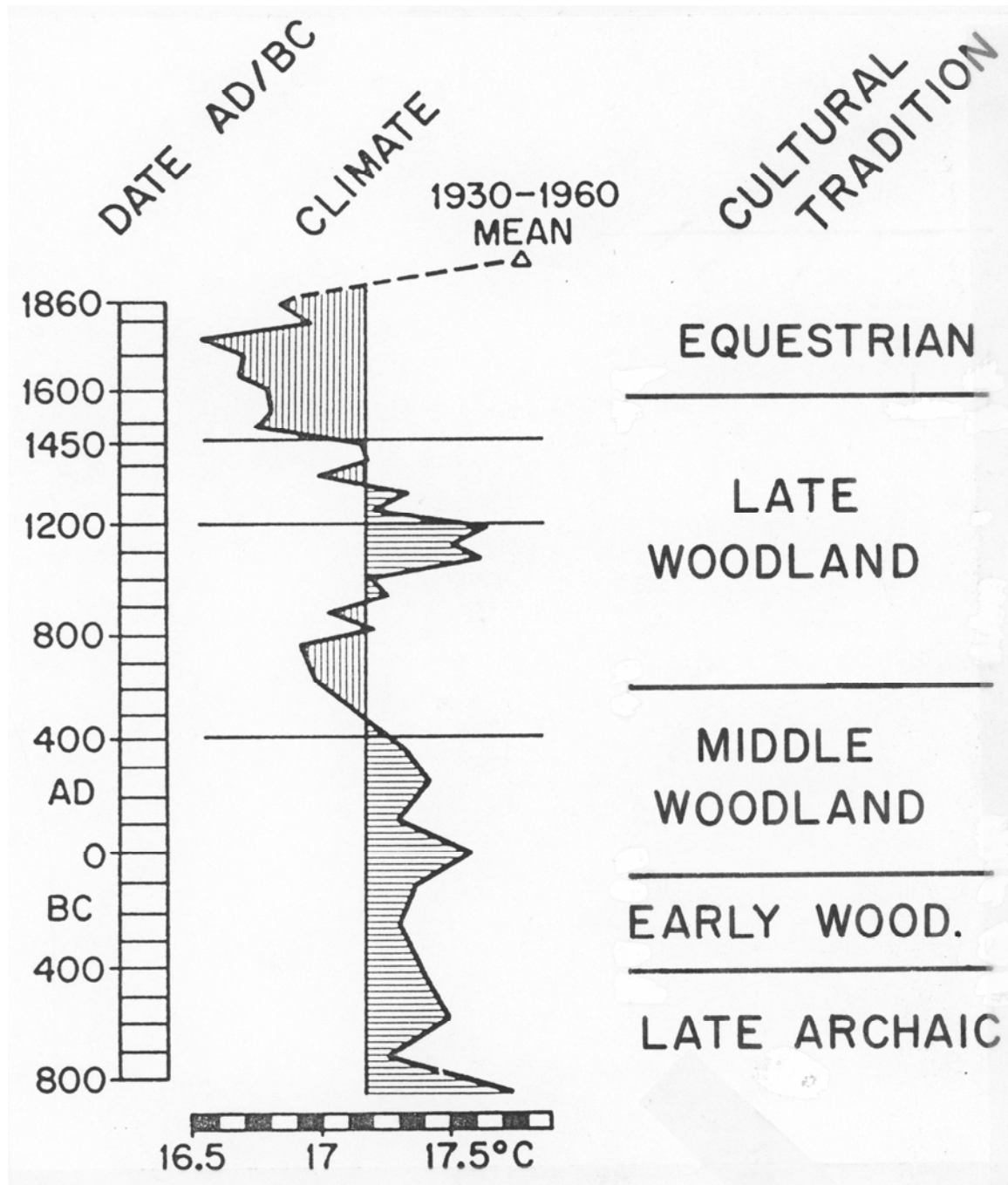
The Plains Woodland tradition in the NRRSU comprises Early, Middle, and Late periods. Woodland lifeways in the region entail a long and diverse history since their inception about 400 BC marked by the introduction of ceramics and mound burial. Those lifeways persisted up to and following Euro-American contact in the 17th century.

Paleo-Environmental Modeling

Environmental history in the Red River valley region during the Woodland period spans some 2,500 years and is a complicated, unresolved affair. Five major climatic episodes have been identified during the period between 500 BC and AD 1600: Sub-Atlantic, Scandic, Neo-Atlantic, Pacific, and Neo-Boreal (cf. Anfinson and Wright 1990). Conditions are suggested to have been generally mesic during the Sub-Atlantic, turning xeric in the Scandic, improving again in Neo-Atlantic, and returning to periodically xeric early in the Pacific. Figure 9.3 is a diagram illustrating the relationship between climate and culture during the late Holocene based on the work of Bernabo (1981) and Bryson (1987).

Pond sediments in the Turtle Mountains and elsewhere in the NRRSU which exhibit continuous Holocene stratigraphic records should be sampled and analyzed in order to expand our current knowledge regarding past regional environments (cf. Anfinson and Wright 1990:216-218).

Figure 9.3: Diagram depicting the relationship between climate and culture during the late Holocene (adapted and modified from Bryson 1987:Figure 4).



Cultural Chronology

The regional Woodland cultural chronology includes Middle Woodland (Sonota, Laurel, and Malmo) and Late Woodland (St. Croix-Arvilla, Blackduck, Sandy Lake, and Devils Lake/Sourisford) complexes (cf. Anfinson 1990; Gibbon and Caine 1980).

Early Woodland remains are not well known in the NRRSU. Some of the corner-notched and side-notched dart point forms found at sites could be indicators of Early Woodland use of the prairie-forest ecotone during improved conditions concordant with mesic intervals in the Sub-Atlantic episode. Likewise, early ceramics have not been readily identified. Anfinson and Wright (1990:219) have recently indicated that the earliest reliably dated mound in Minnesota occurs at the Anderson site (21ML1) which produced a corrected date of 260BC±180 (I-786). An early date (of 800 BC) from Morrison mound (21OT2) has been suggested by many to be too early (cf. Wilford et al. 1969). A comprehensive chronometric dating program aimed at refining the existing Woodland chronology in Minnesota and the Dakotas should be initiated. Lenius and Olinyk (1990:Table 8.1) and Reid and Rajnovich (1991:Table 1) have summarized Laurel and Blackduck dates from the Upper Great Lakes region.

Middle Woodland components are better represented by both mounds and campsites. Besant side-notched points occur at sites in the Pembina, Forest, and Turtle river valleys (Bleier et al. 2006; Brown et al. 1982; Larson et al. 1986; Loendorf and Good 1974a, b). However, ceramic remains akin to Laurel have not been commonly reported (cf. Lugenbeal 1978b; Stoltman 1973).

Many of the reported earthen mounds in the NRRSU are thought to have begun to be used to inter the dead by early Middle Woodland times (cf. Cole 1967b, n.d.). Unfortunately, few of these components have been absolutely dated. The Inkster Mound (32GF19) along the Forest River contained the remains of at least 28 interred individuals. Two dates of 1380±100 BP (Beta-12570) and 1670±140 BP (Beta-12571) have been reported (Larson et al. 1986:41). The cultural/temporal determinations for the other sites are largely based on artifact cross dating.

Transitional Middle-Late Woodland (ca. AD 600-900) remains from the Red River valley have been grouped in the Arvilla complex by Johnson (1973). The Arvilla Mounds (32GF1) serve as the namesake for the complex. Syms (1982b) has pointed to the apparent artifact heterogeneity to suggest greater temporal and cultural diversity within Arvilla. It now appears that earlier (unnamed) Middle Woodland, transitional St. Croix, and possibly later Devils Lake/Sourisford remains are presently included under the existing rubric.

Contemporaneous Late Woodland Blackduck and Sandy Lake ceramics can be expected to occur at sites in the northern and southern ends of the Study Unit on an AD 1000-1600 time level (cf. Blikre and Benn 2003; Breakey 1981;

Cooper and Johnson 1964; Klinner 1995; Larson et al. 1997; Lenius and Olinyk 1990; Lugenbeal 1978a). This long and complicated cultural sequence will be refined and modified as work progresses in the NRRSU.

Settlement Behavior

Woodland settlement behavior in the upper Red River valley in North Dakota has not been investigated in any great detail. Middle and Late Woodland habitation and mound sites are known to occur along glacial Lake Agassiz beaches to the east in Minnesota (Anfinson 1990; Bakken 1988; Johnson 1973; Thompson 1985; Winchell 1911).

Encampments can be expected in terrace settings along all the major tributaries such as the Pembina, Forest, Turtle, and Goose rivers (cf. Cole 1968a, b; Larson et al. 1986). Mound groups should be situated in prominent upland settings and along glacial beach settings nearby (cf. Haury 1990; Winchell 1911). What is the spectrum of Middle Woodland site types in the Red River Basin?

Native Subsistence Practices

Wild game including bison is suspected to have been a critical resource. Domestic dogs may also have served dual functions as beasts of burden and food resources. Similarly, the role of plant foods is largely undetermined. Lofstrom (1987) has speculated on the importance of wild rice in the diets of Woodland peoples. How different were Early and Middle Woodland subsistence economies in the interior of the basin from those of the protohistoric groups contacted by Euro-American traders in the 17th century (cf. Gough 1988; Hickerson 1959)?

Freshwater mussels and snails were dietary items of Woodland and Archaic peoples in the Midwest and Midsouth. The Red River of the North contains harvestable populations of clams (cf. Cvancara 1983; "Clams on the Red River," *Grand Forks Herald*, September 6, 1990). How important were mussels as a dietary item to NRRSU Woodland peoples (cf. Riggle and Freitag 1990)?

Williams (1982) provides one of the few available assessments of Woodland era nutrition and health undertaken through the study of skeletal biology of a mortuary population from the Inkster Mound (32GF19). Based on dental data, Williams (1982:181) suggests an "unprocessed, abrasive, low carbohydrate diet." Much more remains to be done in this realm (cf. Ossenberg 1974). Further bioarchaeological studies focusing on diet, nutrition, and prehistoric health merit inquiry (e.g., Williams 1996).

Technologies

Woodland ceramic technology has been a subject of interest to archeologists for some time, particularly since these containers (along with mound construction) serve as key material traits used to mark the beginning of

the Woodland era in Northeastern Plains (cf. Anfinson and Wright 1990). Did ceramic vessels among Laurel groups serve different functions from those of their contemporary Sonota and Malmo counterparts (cf. B. Nelson 1991)? Analyses of food residues may provide corroboratory information (cf. Thompson 1990).

Lithic craftspeople used a variety of locally available and exotic stone materials to fashion stone tools. A comprehensive study of Woodland lithic utilization could be carried out to determine stone use patterns in the valley and surrounding environs (cf. Bakken 1985). Clark (1982, 1984) provides useful background information concerning KRF use by regional groups. The addition of the bow and arrow to the technological repertoire has been proposed by some to be a Late Woodland development (cf. Anfinson and Wright 1990:222). How do we identify the addition of this piece of weaponry in the archeological record of the NRRSU?

Bone and shell artifacts largely occur as grave goods in Woodland mortuary contexts in and around the NRRSU (cf. Cole 1967b, n.d.; Johnson 1973; Stoltman 1973; Wilford et al. 1969). Gregg and Aird (1991) illustrate a rarebarbed bone harpoon recovered from an Agassiz beach setting. Other perishable items of wood, bark, and vegetative matting were likely produced by Woodland craftspeople too (cf. Montgomery 1906). What other “invisible” but potentially diagnostic items of material culture have eluded the archeologist’s detection in the NRRSU?

Artifact Styles

Regional Early, Middle (Sonota, Laurel, and Malmo), and Late (Kathio, St. Croix, Blackduck, Sandy Lake, and Devils Lake/Sourisford) Woodland ceramic complexes have been reported in the archeological literature for some time. However, studies by Lenius and Olinyk (1990) and Reid and Rajnovich (1991) indicate the potential of further quantitative and qualitative analyses as an aid in refining the cultural chronology and typological/classificatory schemes.

Middle Woodland age Besant side-notched and St. Croix corner-notched points have been reported from sites in the Forest River drainage and elsewhere throughout the upper Red River valley (Bleier et al. 2006; Brown et al. 1982; Larson et al. 1986:Figure 8a; Loendorf and Good 1974a). Late Woodland projectile tips include small side-notched and triangular forms (Larson et al. 1986; Michlovic 1987). What is the spatial and temporal distribution of Avonlea remains in the NRRSU?

Bone and shell items (except for nonlocal/exotic remains) have generally not received as much attention in prior studies of Woodland craft production. Barbed bone and antler harpoon points frequently occur in Laurel assemblages to the northeast (cf. Stoltman 1973). Johnson (1973) reported similar items from the Arvilla Mounds (32GF1). Freshwater mussels served as stock material for the production of utilitarian and ornamental objects (ibid.). What classes of bone and

shell artifacts serve as useful Woodland cultural/temporal indicators in the NRRSU?

Regional Interaction

As elsewhere in the Northern Plains, artifacts fashioned from nonlocal or exotic stones, bones, shells, and metal ores provide the best evidence for long-distance trade and interaction (cf. Gregg and Picha 1989a; Michlovic 1990). Regional Middle Woodland groups are posited to have been linked to an intersocietal network of exchange referred to as the Hopewell Interaction Sphere (HIS). Various materials such as KRF, obsidian, copper, and freshwater and marine shell circulated through the midcontinent as part of the HIS exchange (cf. Brose 1990; Clark 1984; Gregg and Picha 1989a).

Cole (1967b) reported 21 marine gastropods, including three larger incised shells, associated with an infant interment at the Colony Mound (32GF305). *Columella* artifacts are also reported from the surface. Although the illustrations of these items are not good, it appears that *Natica* and possibly *Olivella* are represented. Excavations undertaken by Albert Jenks in 1936 at the Red Lake River Mounds (21RL1) revealed 319 *Natica* beads arranged in rows interred with an individual in Mound 1 (Johnson 1973:31-35). Although the age(s) of these components have not been determined, it can be suggested that a Middle Woodland affiliation is likely.

Loendorf and Good (1974b) reported that two obsidian flakes were collected from 32GF324 along the Turtle River watershed. The Anderson-McDonald mound (32GF235) is located nearby. A distributional study of obsidian artifacts from eastern North Dakota sites should be prepared in conjunction with a source affinity testing program for these materials. Husted (1978) illustrates a series of corner-notched points recovered from a cultural layer at Mummy Cave in northwestern Wyoming dated to ca. 87 BC coinciding with the zenith of the HIS activity in the Midwest. These specimens are similar to some regional Middle Woodland forms. Obsidian is rare in Laurel sites to the northeast (Stoltman 1973). At present it is unknown if KRF artifacts and other HIS materials occur in Middle Woodland age deposits in and near the Yellowstone National Park obsidian source area.

Other Arvilla complex sites reported by Johnson (1973) such as 32GF1 have produced copper artifacts. A copper celt from the Inkster Mound (32GF19) may also be Arvilla. A copper sourcing project (cf. Rapp et al. 1990) could aid in sorting out the complexities associated with Woodland era regional interaction in the NRRSU.

Both Jackson (1991) and Lofstrom (1987) have independently introduced the notion of the “trade fair” as a social mechanism responsible for stimulating intersocietal exchange and the formation of cooperative work efforts necessary

for the construction of Woodland era earthen tumuli. What are some archaeologically testable implications of this hypothesis, and what sorts of artifact samples would be needed to yield scientifically sound data for hypothesis testing?

Historic Preservation Goals, Priorities, and Strategies

Trinkley (1990:38-44) has outlined a series of preservation goals for the South Carolina Woodland period, some of which are already in place in North Dakota. Among these noteworthy suggestions which could apply to North Dakota include:

- 1) Identification
 - a. Development of Funding Sources for Cultural Resources Research
 - b. Master Plan of Statewide Survey Priorities
- 2) Evaluation
 - a. Refinement and Standardization of Research Techniques
- 3) Treatment
 - a. Standardization of Data Recovery Standards
 - b. Encourage Public Participation
 - c. Encourage Preservation as Part of State or Federal Programs

Plains Village Period

Paleo-Environmental Modeling

Climatic conditions are suggested to have improved during the Neo-Atlantic episode concordant with the spread of Plains Village garden horticulture elsewhere in the Northeastern Plains (cf. Anfinson and Wright 1990:222-223; Michlovic and Schneider 1988; Shay 1990:119). As discussed earlier, paleo-environmental research focusing on stratified lakebed deposits could provide an updated local climatic history for the NRRSU.

Cultural Chronology

The current chronology suggests use of the adjacent Devils Lake Basin by early Villager (possibly ancestral Hidatsa) groups. As indicated in Table 9.4, three Plains Village sites (32GF79, 32PB164, and 32TR402) are identified in the NRRSU. Syms (1982a, 1985) suggests that Devils Lake/Sourisford remains be incorporated within the taxon as well. Some of the mounds in the Devils Lake and Red River basins undoubtedly contain interments of Plains Village peoples. Associated campsites must be located nearby. Susan Gregg (1991:3) in her introduction to *Between Bands and States* indicated that “three tightly related variables--abundant resources, permanent or semipermanent residential groups,

and individually based social networks--characterize small-scale, nonhierarchical societies.” Does this scenario cover Northeastern Plains Villagers as well?

Hybrid Village-Woodland cultures are also suspected to have developed in transitional forest-prairie ecotonal settings such as the upper Red River drainage. Florin et al. describe ceramic body sherds recovered from 32GF81 and 32GF82 as “Late Plains Woodland Period, ‘hybrid Village-Woodland complexes,’ or the Northeastern Plains Village complex” (1998:45). Other possible regional examples include the Mortlach complex (Wettlaufer 1955) which may be represented in adjacent portions of the Souris Basin to the west and in the Turtle Mountains in the NRRSU (SHSND 1990:B.33).

Settlement Behavior

No fortified Plains Village encampments like those found along the Sheyenne and the Maple rivers to the south are reported from the upper Red River valley (cf. Michlovic and Schneider 1988). Temporary camps, stone chipping scatters, bison butchering stations, and mortuary and other ceremonial loci can be expected in the NRRSU. Until further inventory work is undertaken along reaches of the upper Red River, Plains Village settlement history and land use will remain sketchy.

Native Subsistence Practices

Plains Village groups in the NRRSU are suspected to have pursued hunter-gatherer-gardener lifeways similar to their counterparts elsewhere in the Northern Plains. Bison hunting probably occupied a central position in the overall subsistence economy. Gardening also played an as yet undetermined role. Maize has been reported as far north as the Lockport site in southern Manitoba by AD 1500 (Shay 1990:119). Wild plants were also undoubtedly important to the diet at certain times of the year. Shay (1990:124) has succinctly summarized the situation: “It would be valuable to reanalyze old faunal collections with an eye to correcting bias in original recovery and reporting. Previously collected and unanalyzed plant remains should be studied, and carbon isotope analysis conducted on available skeletal populations.” The collections made by Montgomery (1906) for example could be reinvestigated.

Technologies

Since relatively little is known about Plains Village lifeways along the upper Red River, baseline information concerning regional stone, ceramic, bone, and shell technologies needs to be compiled. For example, how prevalent was the use of ceramic containers among Plains Village groups in this drainage (cf. Longacre 1991; B. Nelson 1991)?

Michlovic and Swenson (1998) provide an assessment of Northeastern Plains Village ceramics and propose a refined taxonomy for the artifact class. The

archeologists write, “Ceramics of the Northeastern Plains Village complex are evidently a product of local stylistic preferences that were strongly influenced by Oneota and/or Cambria and Missouri Valley wares as well” (ibid.:23).

Artifact Styles

An exotically shaped chipped stone lance point of KRF from a private collection in the Pembina valley is illustrated by Brown et al. (1982). Collections housed in various county historical societies along with those of local collectors should be inventoried, and diagnostic Plains Village artifacts should be analyzed and photographed (e.g., Larson et al. 1997).

Regional Interaction

Michlovic (1990:46-48) has summarized archeological and ethnohistoric evidence in support of an extensive trade network being in force on the Northeastern Plains during late prehistoric times. Artifacts crafted from nonlocal stones such as obsidian, KRF, and catlinite were but one group of exchanged materials (cf. Swagerty 1988; Wood 1980). Larson et al. (1997:44) report that KRF comprises 45% of the lithic materials recovered in 1996 from the Halstad site (32TR402). The 2001 lithic assemblage from 32GF130 reflects an equal reliance on KRF as Swan River chert (Florin 2002:72). Possible overland trails crosscutting the NRRSU should be researched and checked by on-the-ground reconnaissance (cf. Gilman et al. 1979).

Historic Preservation Goals, Priorities, and Strategies

An updated inventory for Plains Village settlements along the Red River and elsewhere (e.g., Turtle Mountains) in the NRRSU needs to be completed prior to any further speculation regarding the poorly understood Villager lifeways in the basin.

Equestrian/Fur Trade Period

The Equestrian Period in northeastern North Dakota spans the advent of the introduction of the gun and the horse to protohistoric native groups in the upper Red River Basin. The gun was introduced first from early French-Canadian and British sources located to the north and east; the horse was probably relatively rare in the NRRSU until the early to mid-19th century.

The upper Red River drainage basin is a vast territory that was frequented by numerous and diverse tribal groups who spoke an equally diverse number of languages and dialects when first contacted by Euro-American traders and explorers in the 17th century (cf. Albers and Ray 1987; Michlovic 1990:48). Some of these well-known peoples include bands of the Dakota, Chippewa, Plains Cree, Plains Ojibwa, and Assiniboine.

Paleo-Environmental Modeling

Climatic conditions during late prehistoric and protohistoric times are thought to have been cooler and moister with reference to the present (1990s). Climatologists refer to this time as the Neo-Boreal episode or “Little Ice Age” (cf. Grove 1988). Concordant with these moister conditions was a posited buildup in the regional biomass including the bison herds. If the writings in the journals of early traders such as Alexander Henry penned in the early 19th century are reliable, animal and plant communities flourished in the Red River valley at that time (cf. Gough 1988; Reid and Cannon 1928).

Late Holocene environmental change has been a subject of interest to historians, geographers, and archeologists (cf. Ball 1984; Penman 1988; Rannie 1983). Multi-disciplinary research focused on this topic will serve to refine the existing regional paleo-climatic model.

Cultural Chronology

There are no defined and named protohistoric archeological units of the Equestrian tradition in the NRRSU (cf. SHSND 1990). Table 9.10 provides a listing of native tribal and “mixed blood” (Métis) groups posited to have included the NRRSU as part of their territory during early historic times. Because of the high degree of interband mixing, it may prove very difficult to distinguish physical traces/archeological deposits left by different ethnic groups (see below).

Table 9.10: Sources of Background Information for the Equestrian Period in the Northern Red River Study Unit.

Group	Author and Date
Assiniboine	Lowie (1909) Denig (1961)
Dakota (Yankton and Yanktonai)	Denig (1961) Howard (1966, 1972, 1976) Warren (1986)
Métis	Peterson and Brown (1985) Peterson (1990)
Ojibwa (Chippewa)	Hickerson (1970, 1988) Ritzenthaler (1978)
Plains Cree	Mandelbaum (1979) Milloy (1988)
Plains Ojibwa (and Ottawa)	Howard (1965) Ritterbush (1990)
General	Hodge (1975) Gregg and Hanson (1985) Albers and Kay (1987) Dobbs (1989a)

Ritterbush (1991b) has identified several possible fur trade related archeological sites along the Red. Additional investigations, including test excavation, should be undertaken in order to shore up the chronology, subsistence, artifact styles, and technology gaps with some empirical data.

Settlement Behavior

Late prehistoric settlement in the NRRSU is suspected to have been characterized by seasonal mobility attuned to access components of the local resource base (cf. Gamble and Boismier 1991). Regional population density is also suggested to have increased during the period (Shay 1990:118). However, this growth was not substantial enough to have altered long-term trends in Plains sociopolitical organization. As Kelly (1991:153) has suggested, "In many cases, evolution of nonegalitarian hunter-gatherer societies involved responding to a situation in which residential mobility was not a viable response to local resource failure."

Native settlement in postcontact times was linked to fur trade-related activity during at least certain stages of the annual round (cf. Hickerson 1956; Penny and Larson 1993; Ritterbush 1990; Woolworth 1986). Early Euro-American land use in the basin was inextricably linked to this economic system as well (cf. Listenfelt 1913; Michael 1965; Ritterbush 1991a, b; Wheeler 1948). What attributes can be used to identify postcontact settlements in the "Hair Hills?"

Native Subsistence Practices

Ritterbush (1990:60-83) provides an excellent summary of Plains Ojibwa (and Ottawa) subsistence in the upper Red River valley based on her extensive ethnohistoric research. Similarly, pertinent discussions of subsistence practices for other groups such as the Yanktonai Dakota have appeared in the literature as well (cf. Warren 1986; Woolworth 1986). Empirical tests of these premises can be carried out with further testing work being undertaken at sites in the NRRSU. It is imperative that fine-mesh screening and flotation be implemented to sample for seeds of tobacco and other plant macrofossils in cultural deposits.

Technologies

The arrival of Euro-American implements obtained via the fur trade altered existing native technologies. Ethnohistoric research provides some indication of the quantity and diversity of provisions entering the NRRSU as well as those goods exiting the system (cf. Reid and Cannon 1928; Ritterbush 1991b). However, the processes of internal technological change have not been identified and investigated in any detail. All facets of material culture, including chipped stone, bone, and shell technologies were likely affected. Samples of fur trade era assemblages in the NRRSU need to be studied with this goal in mind.

Artifact Styles

DeBoer (1991) has discussed the distinction between *pervasive* and *partitive* decorative organizations. In *pervasive* schemes, decoration crosscuts multiple artifactual categories such as pottery, bone, shell, textiles, and even body tattooing, whereas in *partitive* schemes specific decorations are associated with individual artifactual media. In-depth study of various regional artifact styles

may provide useful clues for separating or combining the material culture of particular ethnic groups on the Northern Plains. Are there recognizable stylistic differences in the archeological remains left by Siouan and Algonquian speakers in the NRRSU?

Regional Interaction

Long-distance movements of people, materials, and ideas were relatively commonplace by protohistoric times on the Northern Plains. As Albers and Kay (1987:68-69) state,

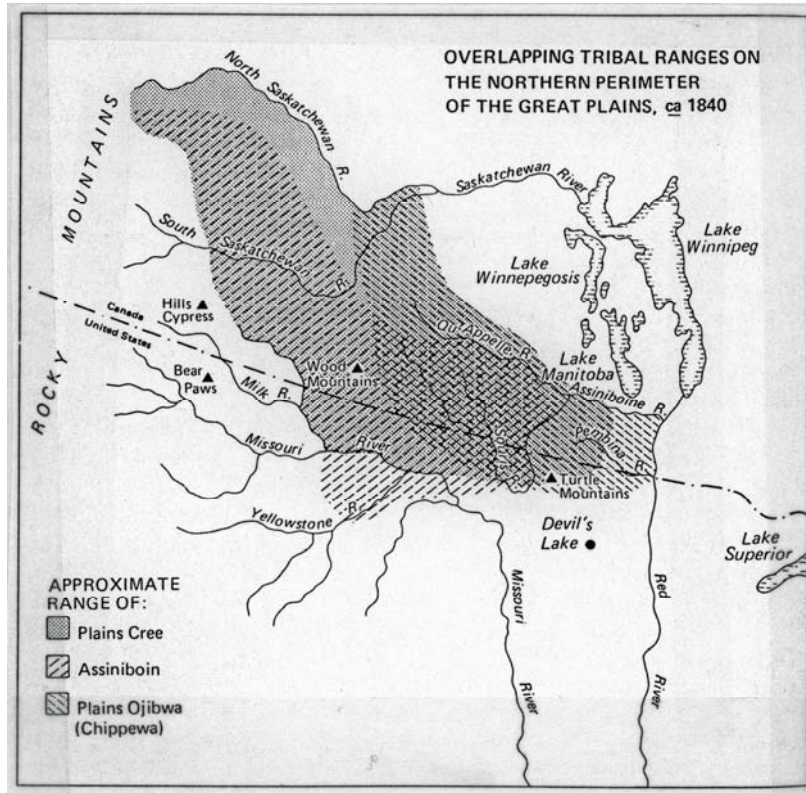
...the two groups (Assiniboine and Cree) formed joint war parties and traveled together on trading expeditions to the horticultural villages on the Missouri River as well as to European posts on the Red, Pembina, and Assiniboine rivers. By the turn of the nineteenth century, migrating bands of Chippewa, Saulteux, and Ottawa added to the ethnic complexity of the region.

Figure 9.4 depicts overlapping tribal ranges of the Plains Cree, Assiniboine, and the Plains Ojibwa in the northern parts of the NRRSU at about 1840. We can add the Yankton and Yanktonai Dakotas and the Metis to this list as one moves southward through the Red River drainage (cf. Denig 1961). This documented territorial palimpsest confirms the complexity of comprehending and defining areas used by different groups of people through time (cf. Syms 1985). Can distribution patterns of certain materials (e.g., catlinite) and artifact styles aid in delimiting trade routes in the upper Red River valley and beyond?

Historic Preservation Goals, Priorities, and Strategies

The following is but one of many data gaps that remain in the NRRSU. A cultural resources inventory of (all or portions of) the Turtle Mountain Indian Reservation and surrounding areas could be undertaken to generate information concerning prehistoric and protohistoric settlement and land use in this little studied part of north-central North Dakota. Complimentary ethnohistoric research would serve in providing the necessary background information to enhance and round out such a study.

Figure 9.4: Map depicting overlapping tribal ranges of various Equestrian period groups near the NRRSU during the 1840s (from Albers and Kay 1987:68).



Prioritization of Historic Preservation Goals in the NRRSU

This section presents a listing of prospective research projects which have been mentioned above. The list is prioritized according to research merit, feasibility, and in some cases broadness of scope.

1. An illustrated inventory of Old Copper artifacts from eastern North Dakota should be prepared. Knowledgeable local individuals should be consulted and invited to contribute in this process.
2. An updated survey for Paleo-Indian artifacts (specifically projectile points, blade cores, and blades) and associated cultural deposits should be undertaken.
3. Possible overland trails crosscutting the NRRSU should be researched. This project should include on-the-ground inventory to identify remnant segments of trails as well as associated camps and possibly other sorts of sites (cf. Gilman et al. 1979:16).
4. A comprehensive study of Woodland lithic utilization should be carried out in an attempt to identify patterns of stone use at different times in the prehistory of the valley (cf. Bakken 1985).
5. Pond sediments in the Turtle Mountains and elsewhere in the NRRSU which exhibit continuous Holocene stratigraphic records should be sampled and analyzed in order to expand our current knowledge of past regional environments (cf. Anfinson and Wright 1990:216-218).
6. Collections held by various county historical societies and private collectors should be inventoried, and diagnostic Plains Village artifacts should be analyzed and photographed.
7. A cultural resources inventory of all or portions of the Turtle Mountain Indian Reservation and surrounding areas should be undertaken to generate information concerning prehistoric and protohistoric settlement and land use in this little studied part of the state. Related ethnohistoric research would identify specific high potential areas for survey and also enhance the findings of the inventory in various ways. Members of the reservation community should be invited to participate in the project.
8. Bioarchaeological studies focusing on diet, nutrition, and prehistoric health should be conducted. This requires analysis of human bone. Support for such studies should be sought from regional Indian groups.
9. Additional geoarcheological investigations of the area of former glacial Lake Agassiz should be undertaken with emphasis on mapping and correlating beach ridges and strandlines. Radiocarbon dates on organic

remains from these contexts (preferably from single component archeological deposits associated with particular beaches) are needed to put existing chronologies on more sound footing (cf. Ashworth and Cvancara 1983:138).

10. Are there recognizable stylistic differences detectible in the archeological remains left by Siouan and Algonquian speakers in the NRRSU? Research should focus on native ceramics as well as European and Euro-American trade goods.