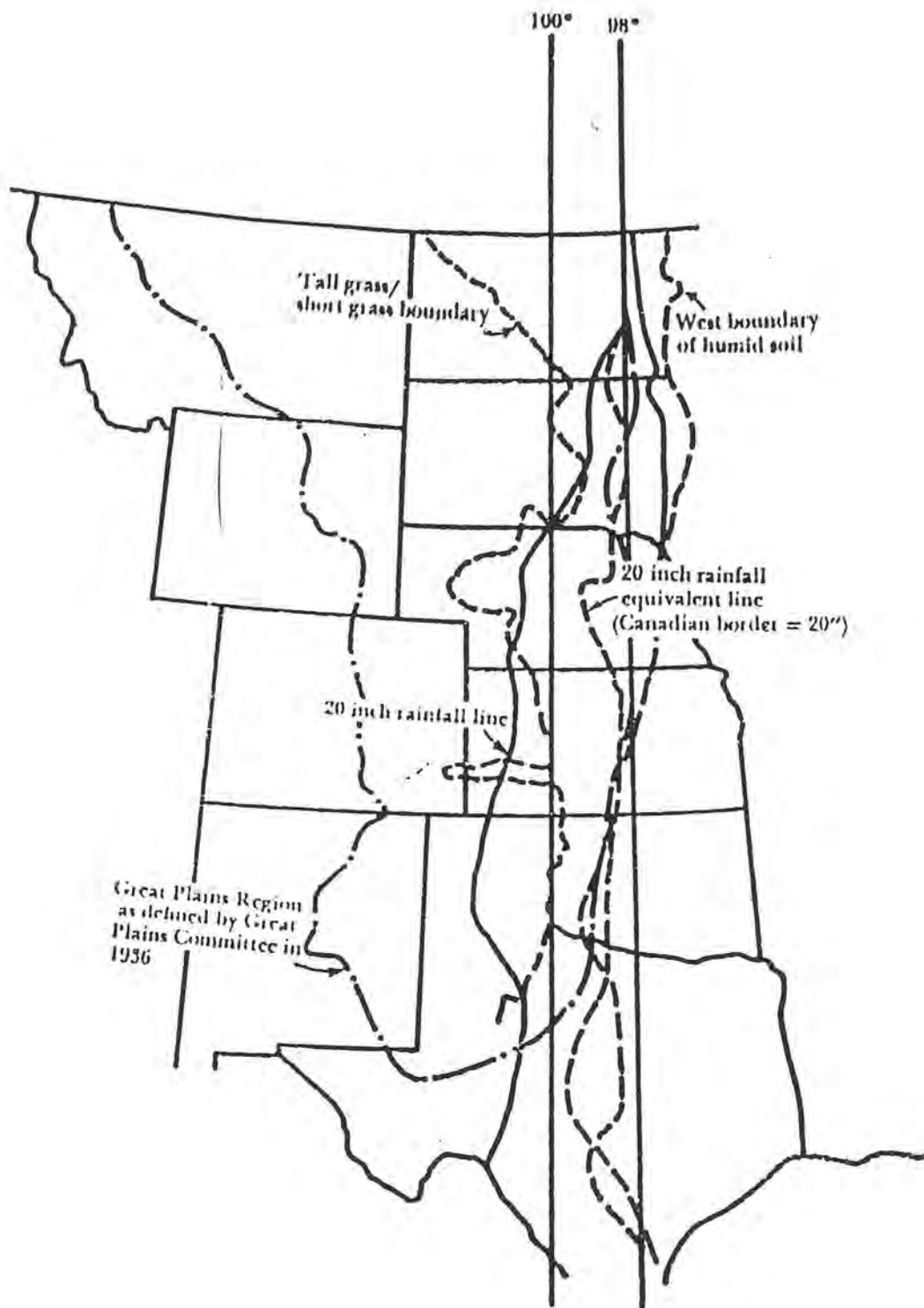
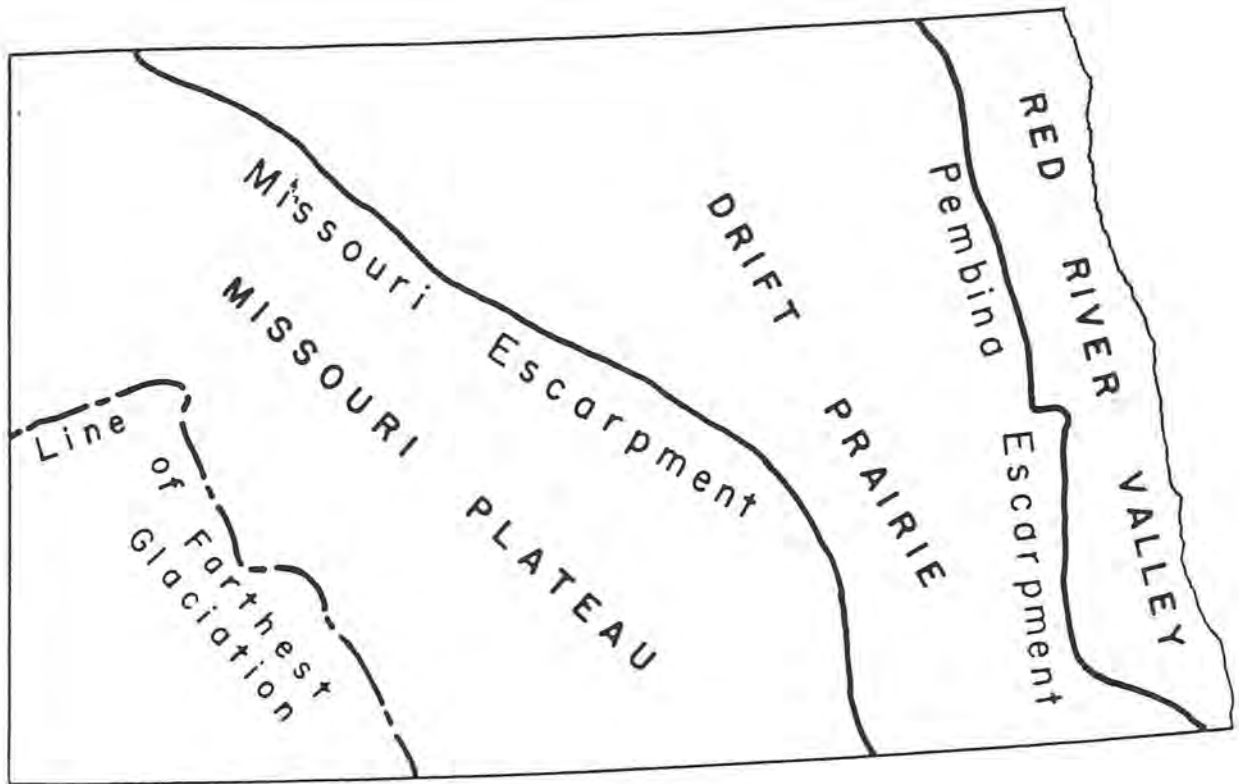


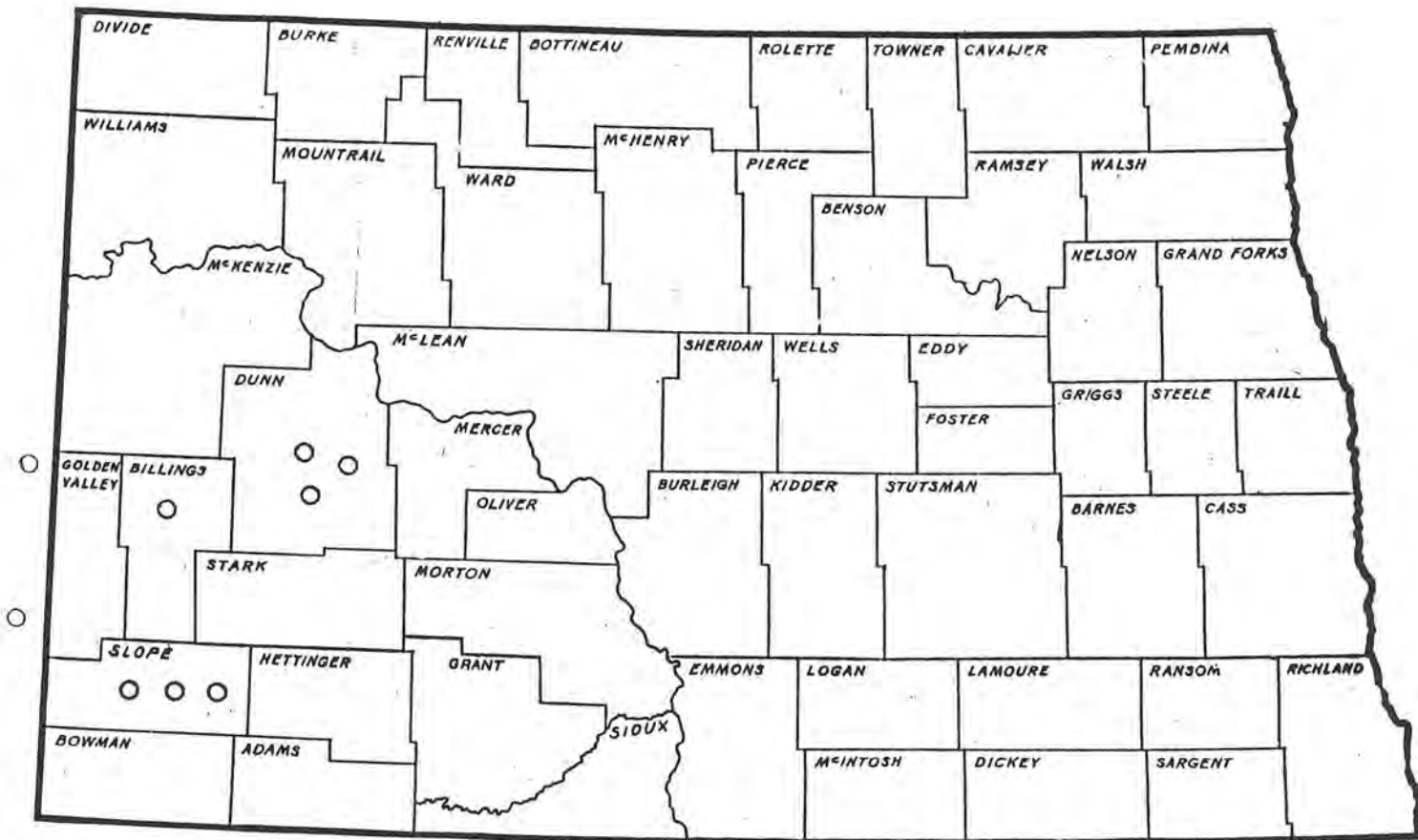
# FIGURES



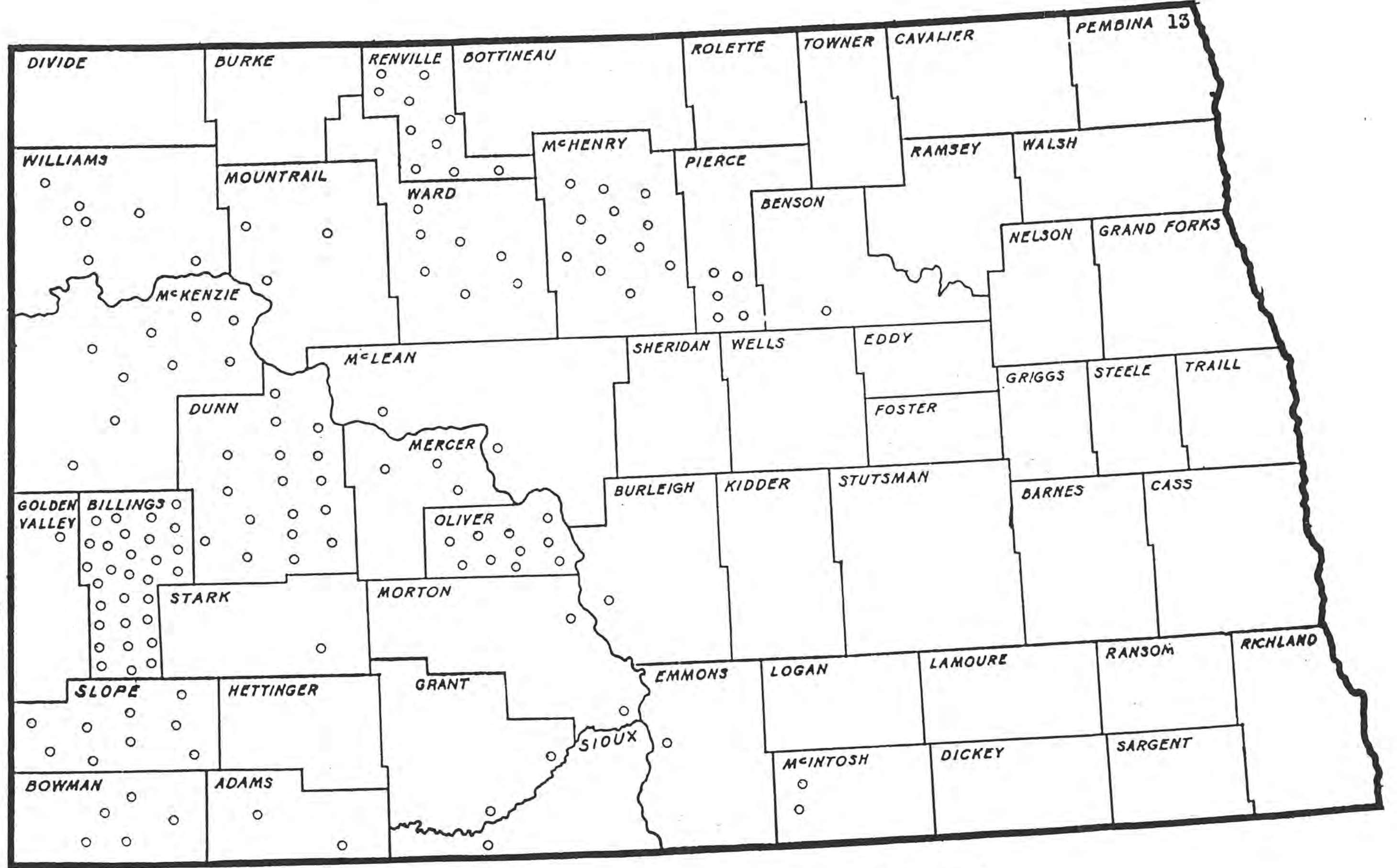
1. The Great Plains Region, with Some Characteristics of its Eastern Limits. (Source: Howard Ottoson, et al. *Land and People in the North Plains Transition Area.*)



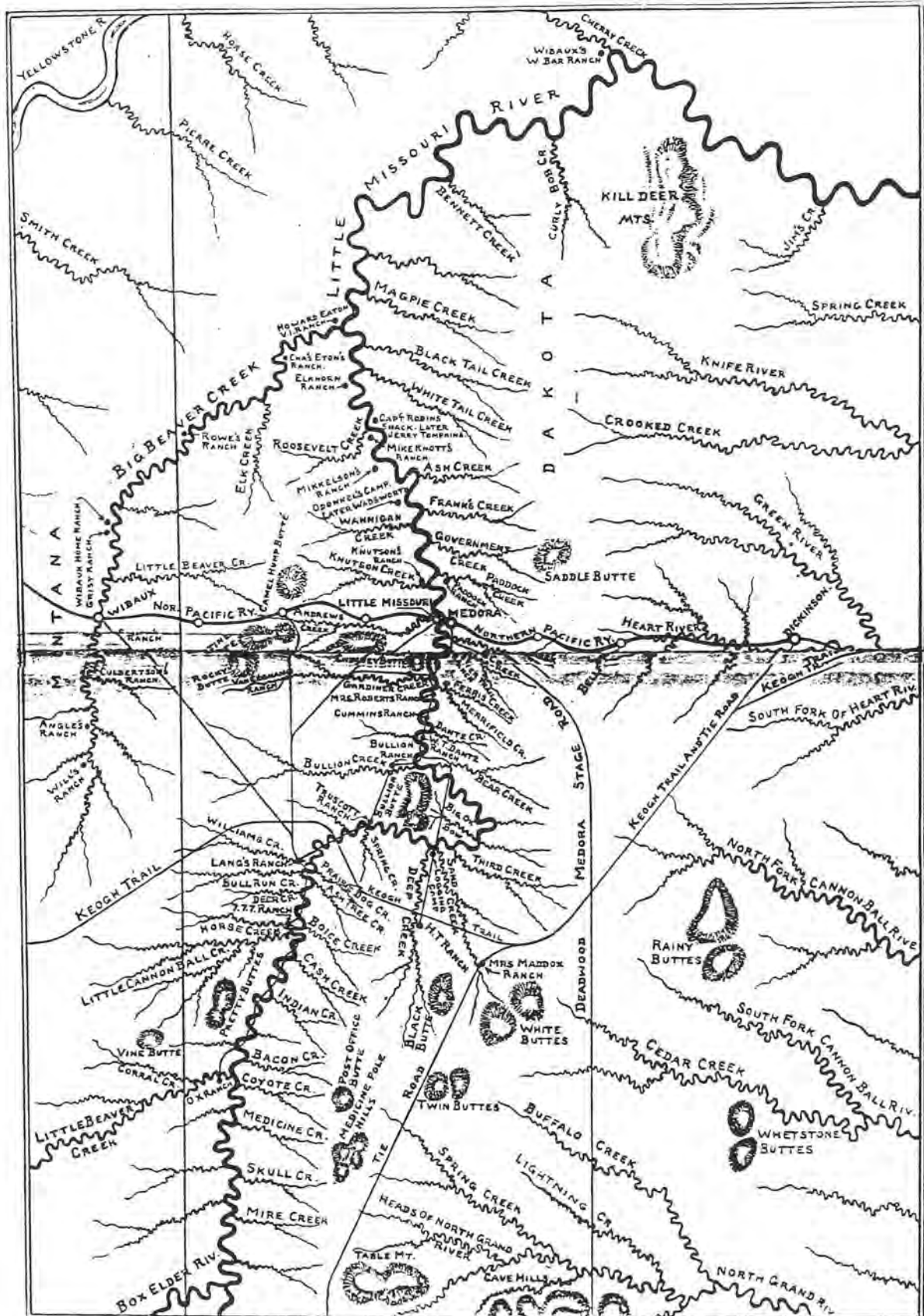
2. Map Showing Topography of North Dakota. (Source: Elwyn Robinson, *History of North Dakota*.)



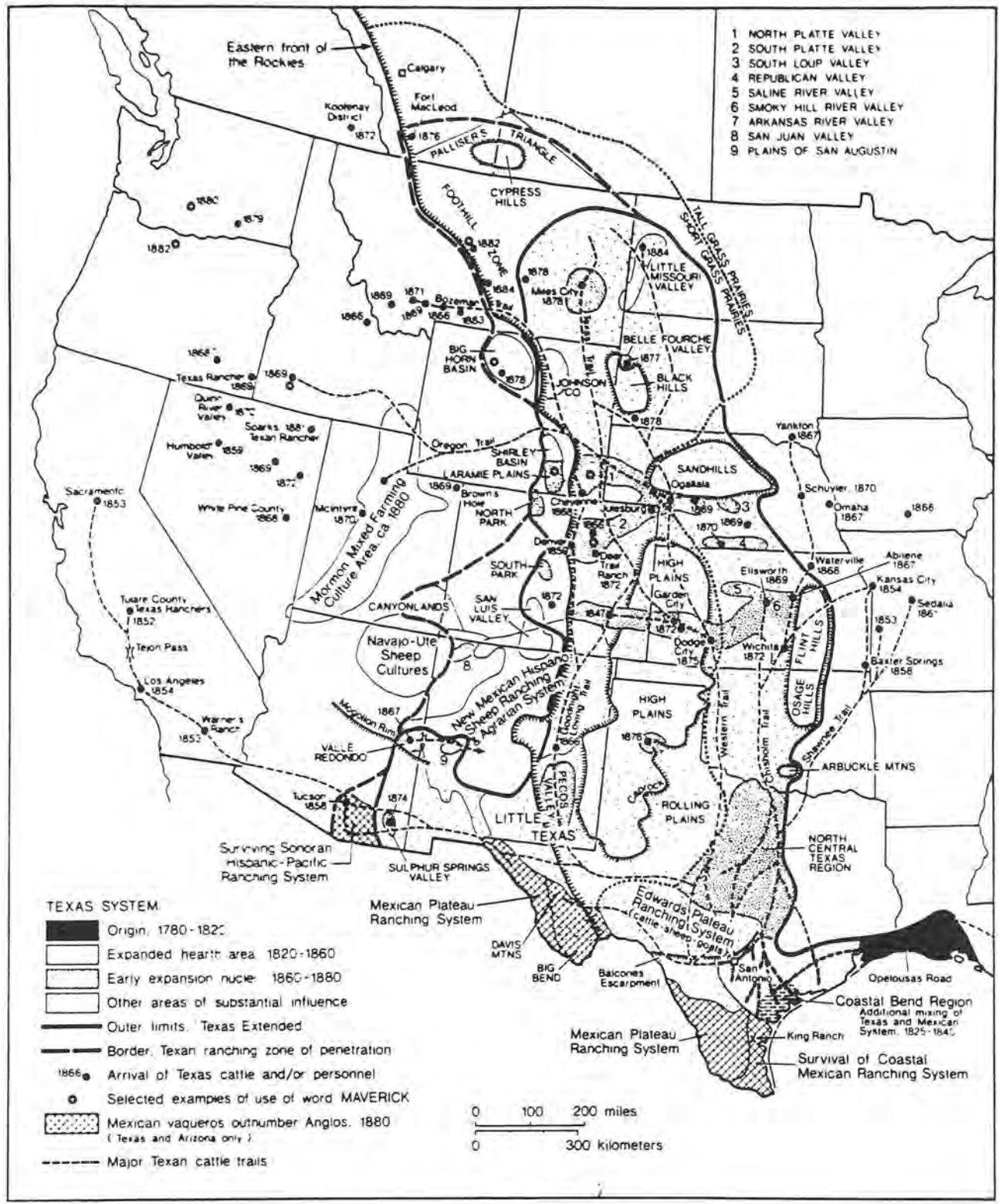
3. Map with Ten Largest Open Range Ranch Operations in Region.



4. Map Showing Small-Large Scale Open Range Cattle Ranches, late 1870s-late 1890s.



5. Ranches in Vicinity Little Missouri River. (Source: H. Hagedorn, *Roosevelt in the Bad Lands*.)



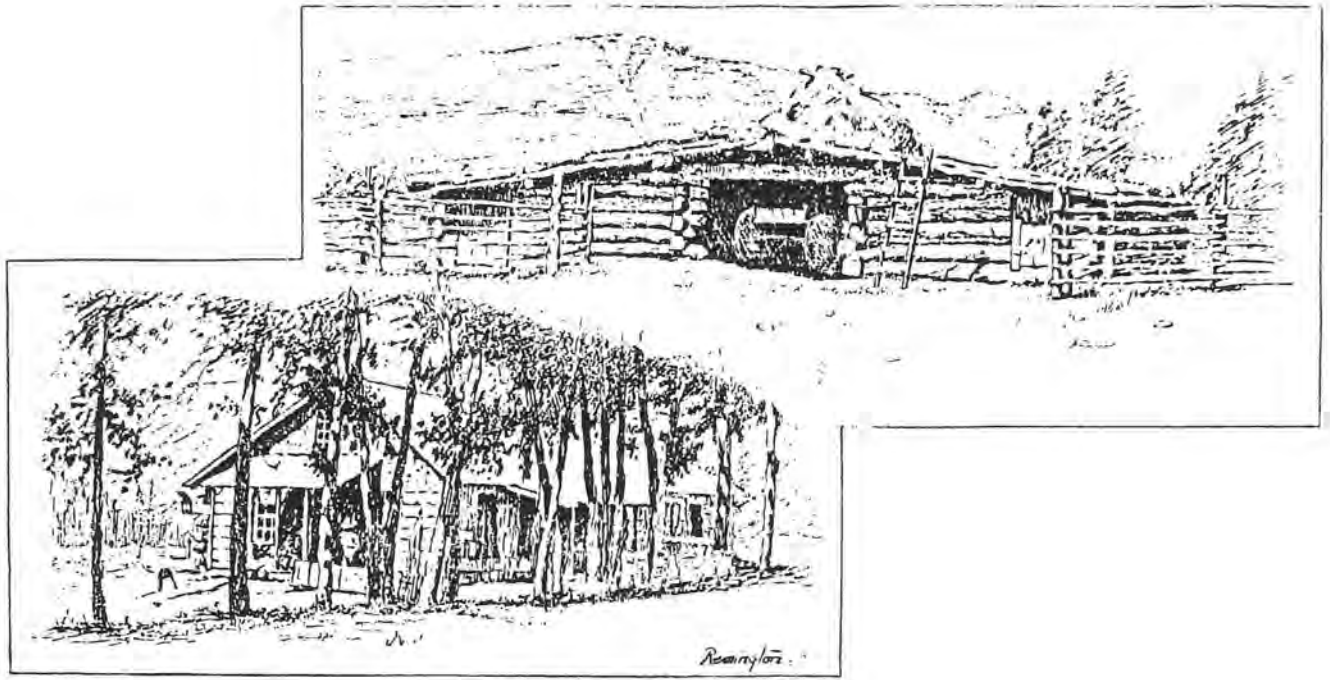
6. Map of the Origins and Spread of the Texas System of Cattle Ranching Including Major Trails. (Source: Terry Jordan, *North American Cattle-Ranching Frontiers*.)



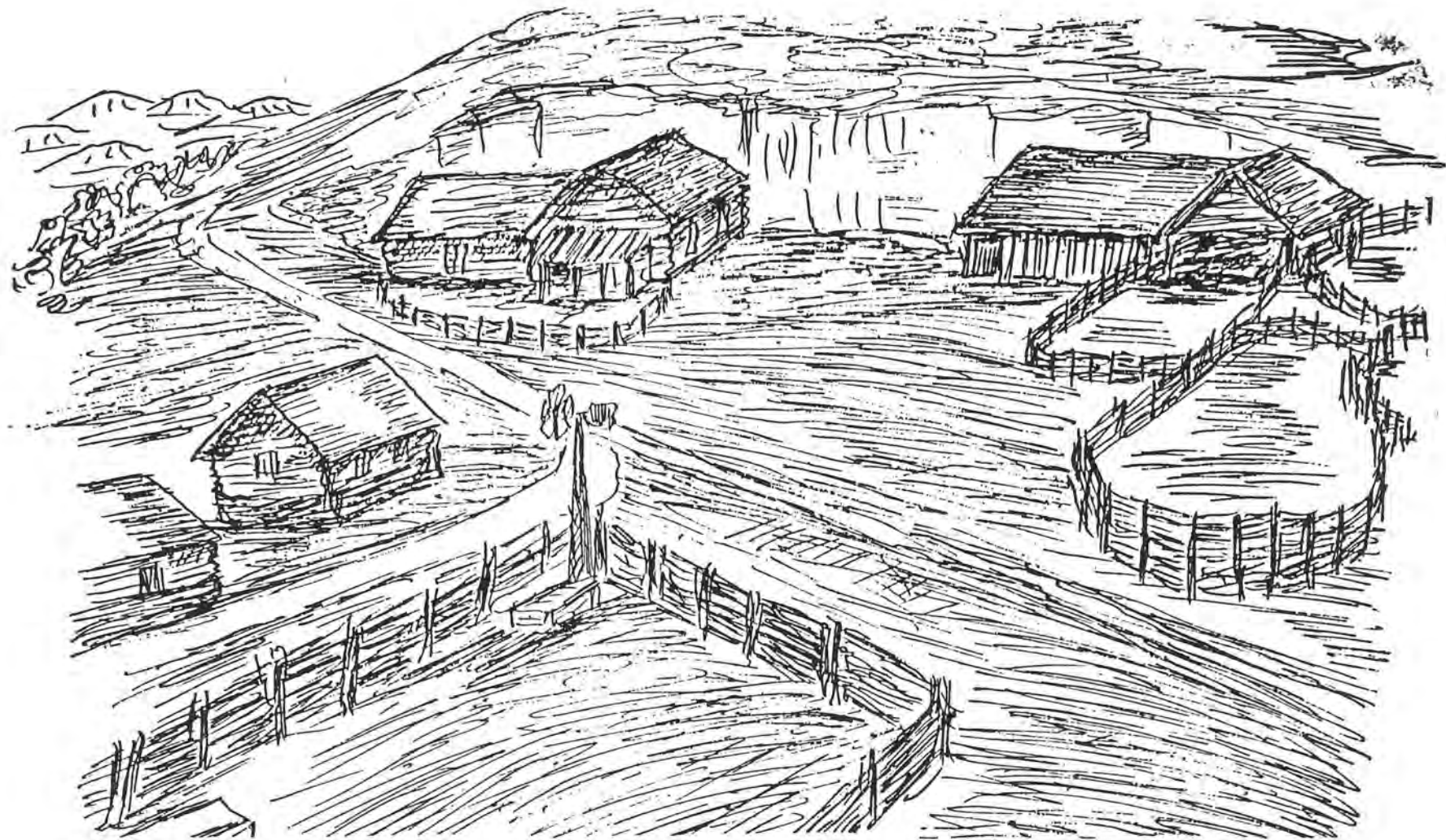
THE OUTLYING CAMP.

7. The Outlying Camp. (Source: Theodore Roosevelt, *Ranch Life and the Hunting Trail*.)



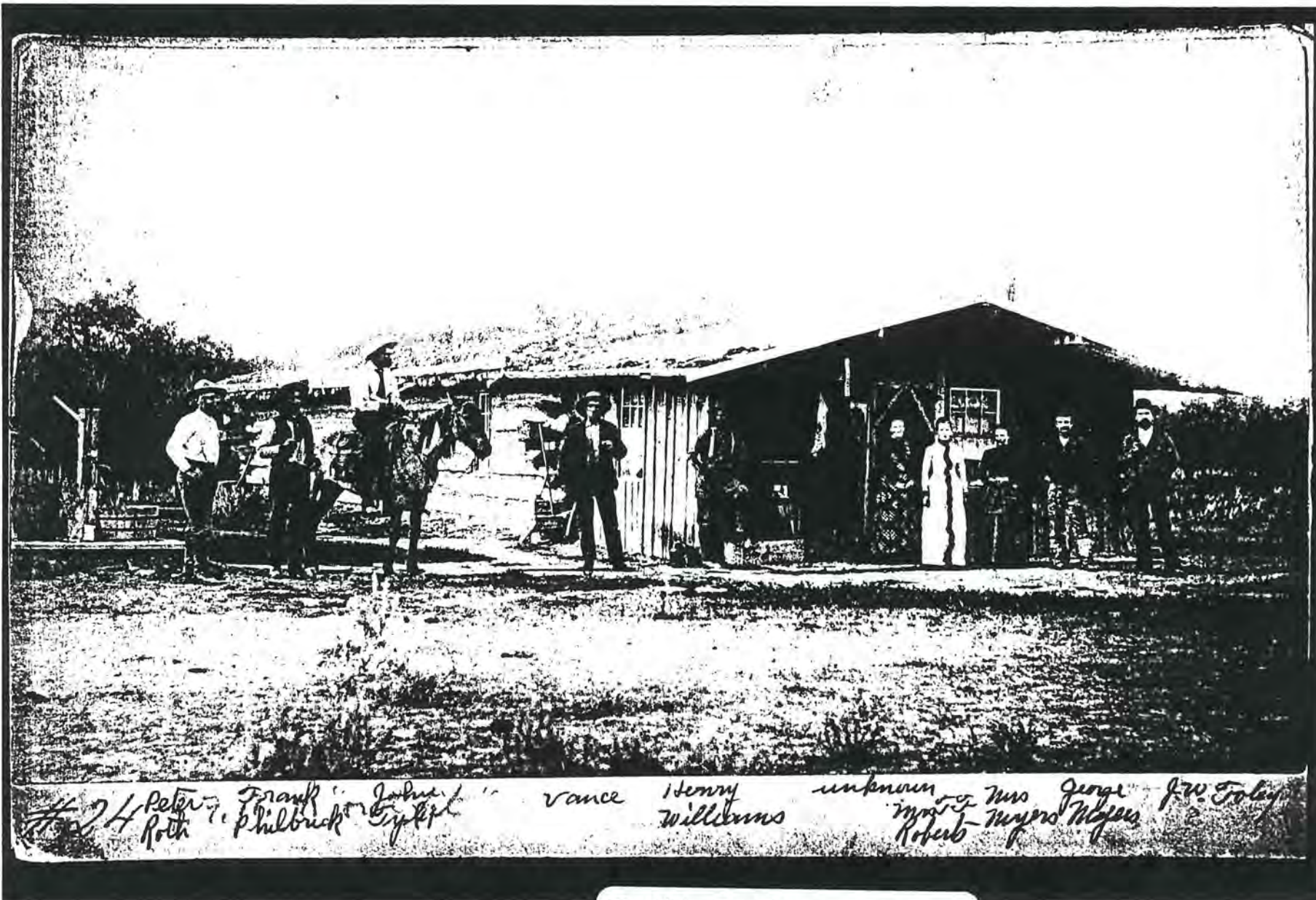


8. Elk Horn Ranch Buildings, Billings County. (Source: Theodore Roosevelt, *Ranch Life and the Hunting Trail*.)



SKETCH OF OUR BELLOWS RANCH IN THE '90's, upper left the Ranch home, on the right the horse barn, lower left the blacksmith shop, and next in center the bunk house. When Wadsworth hired the "Kid" to kill the barn slunky the "Kid" leaned his rifle over the lower half on the barn door to take aim at the slunky who was cleaning the barn at the time. The "Kid's" first shot killed him.

9. Sketch of Bellows Ranch in the 1890s. (Source: Harry V. Johnston, *My Home on the Range*.)



#24 Peter Roth Frank Philbrick John Ely Vance Henry Williams unknown Mrs. George J.W. Foley  
 Mrs. Myers Rogers

FIGURE 10.

FINAL REPORT WILL  
 HAVE QUALITY COPIES  
 FROM THE PHOTOGRAPHS.

State Historical Society of North Dakota  
612 East Boulevard Avenue  
Bismarck, North Dakota 58505-0830

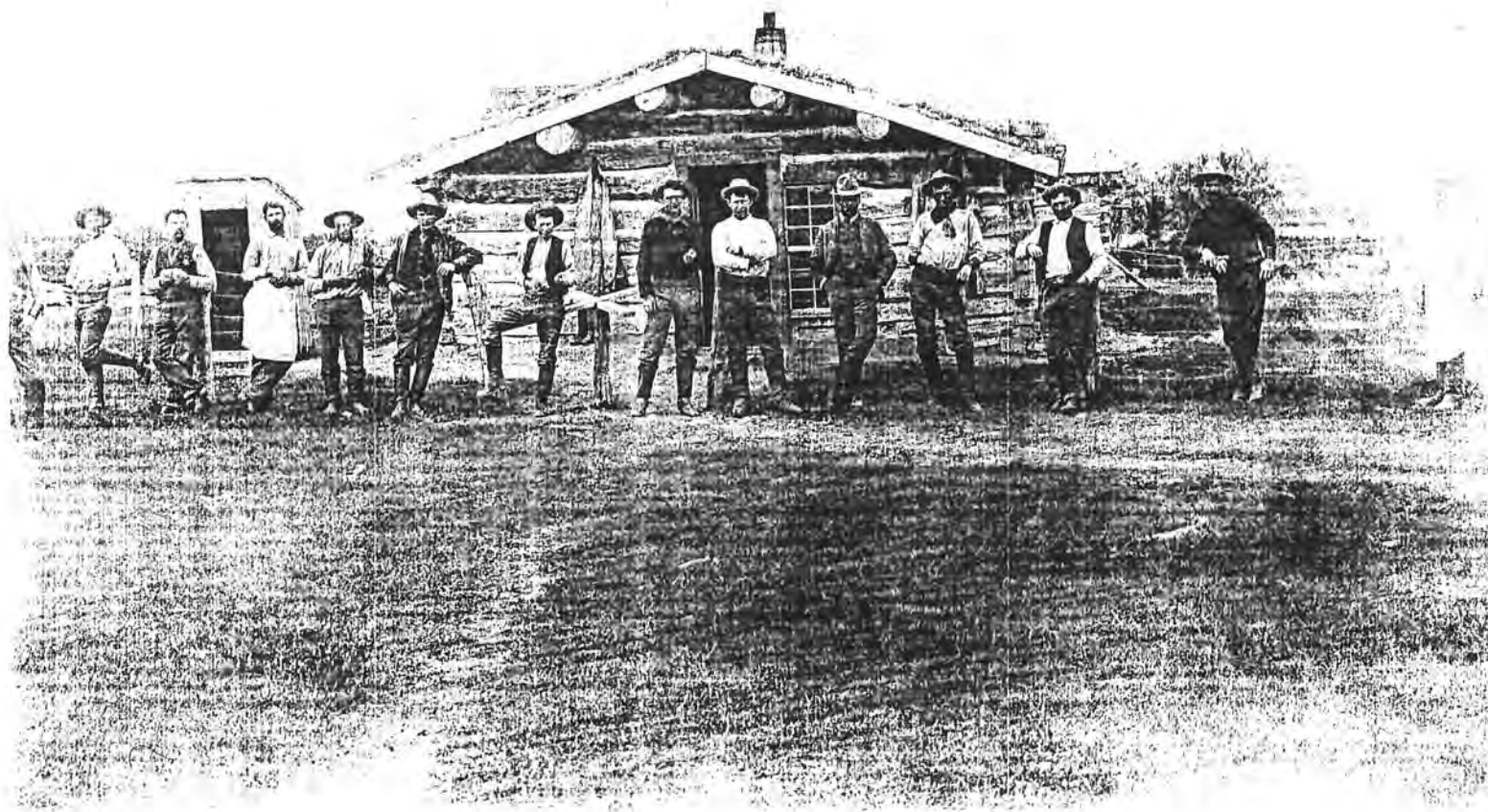
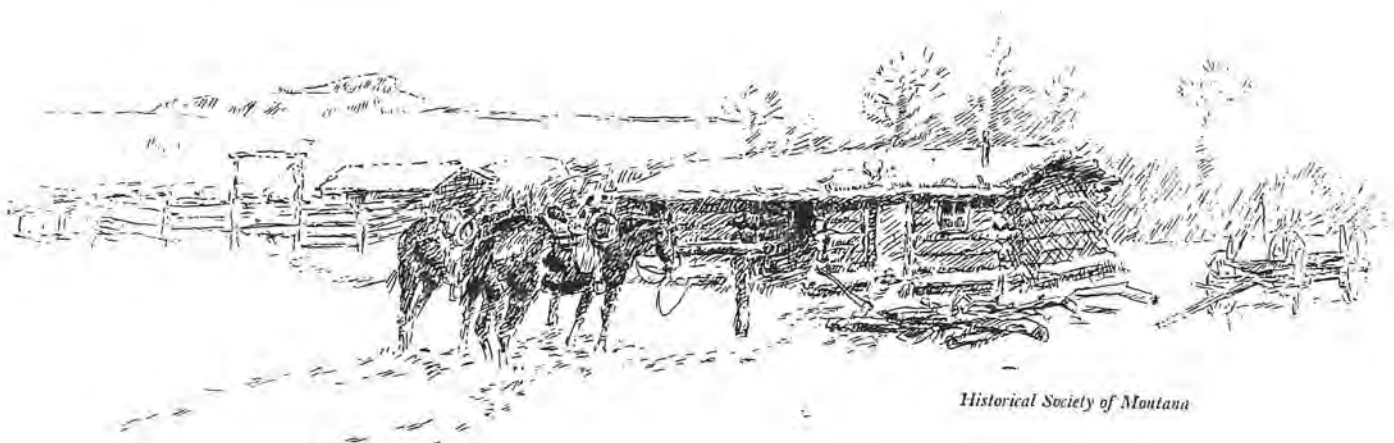


FIGURE 11.



12. Coutts Marjoribanks' Horse-Shoe Ranch in Mouse River Region. (Source: Marjorie Pentland, *A Bonnie Fector*.)

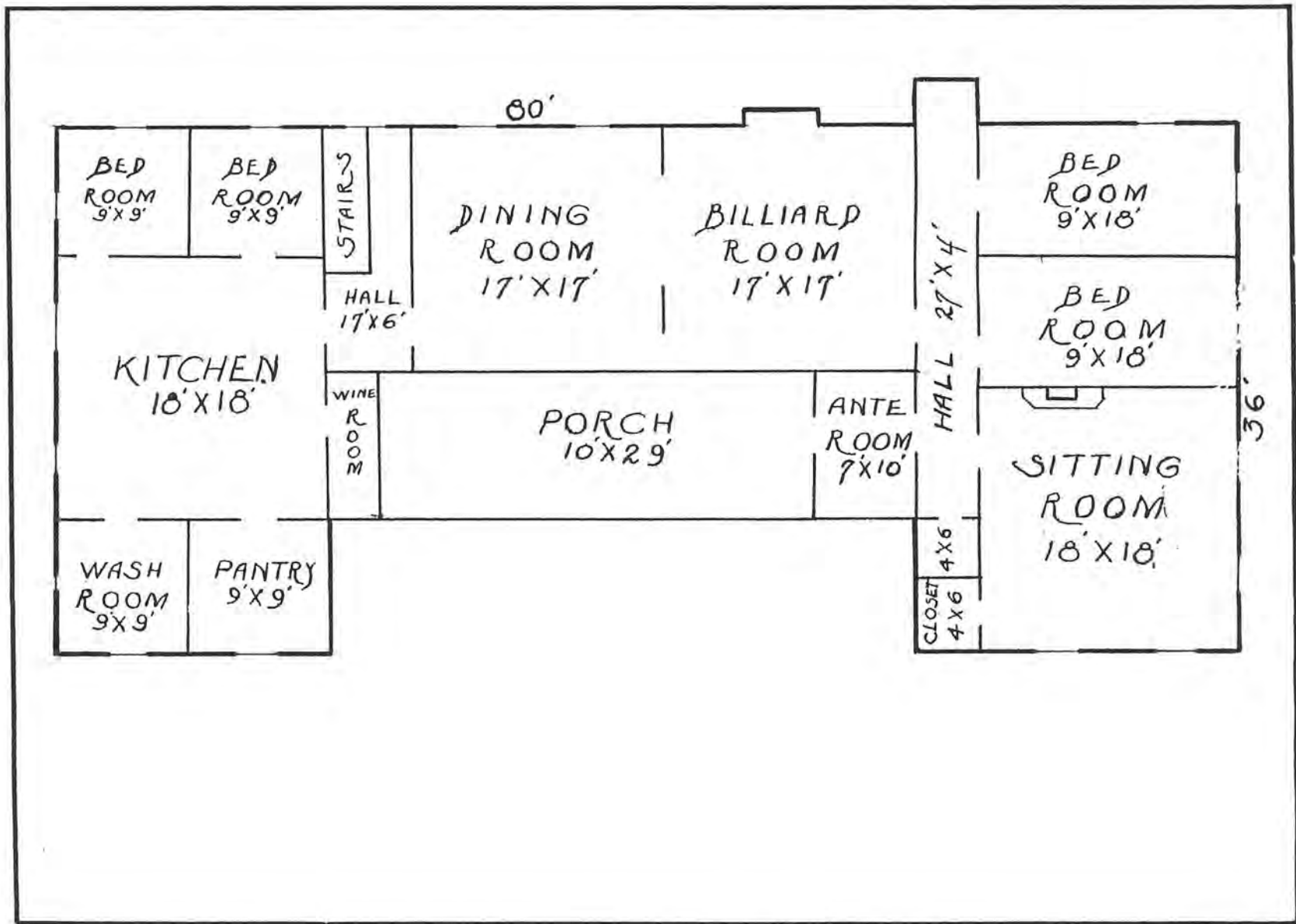


Historical Society of Montana

THE OLD-TIME COW RANCH

CHP 10-1

13. The Old-Time Cow Ranch. (Source: Harold McCracken, *The Charles M. Russell Book*.)



14. Floor Plan, Pierre Wibaux W-Bar Ranch, Montana. (Source: Collection 636 WI, ND State Archives.)

C1058 Little Missouri Horse Co. Headquarters ranch, 1892.

NEG.

State Historical Society of North Dakota  
612 East Boulevard Avenue  
Bismarck, North Dakota 58505-0830



Figure, 15

Headquarters Ranch of the Little Missouri Horse Co.  
Photograph taken in 1892 in late summer. *W.H.*